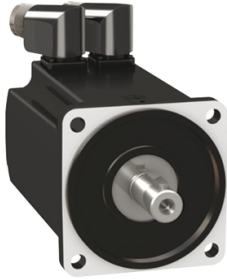


Product data sheet

Specifications



servo motor MH3 100 5,8Nm,key,multi,brake,IP65/ IP67,4kRPM

MH31002P12F2200

⚠ Discontinued on: Oct 9, 2023

⚠ Discontinued

Main

Range compatibility	PacDrive 3
Device short name	MH3
Product or component type	Servo motor

Complementary

Maximum mechanical speed	6000 rpm
[Us] rated supply voltage	115...480 V
Network number of phases	Three phase
Continuous stall current	5.04 A
Continuous stall torque	53.1 lbf.in (6 N.m), 115...480 V, three phase
Continuous power	2270 W
Peak stall torque	159.3 lbf.in (18 N.m), 115...480 V, three phase
Nominal output power	0.59 W, 115 V 1.12 W, 230 V 1.95 W, 400 V 2.27 W, 480 V
Nominal torque	50.18 lbf.in (5.67 N.m) LXM52 4.81 mA, 115 V, three phase 47.17 lbf.in (5.33 N.m) LXM52 4.58 mA, 230 V, single phase 41.33 lbf.in (4.67 N.m) LXM52 4.1 mA, 400 V, three phase 37.2 lbf.in (4.2 N.m) LXM52 3.73 mA, 480 V, three phase 50.18 lbf.in (5.67 N.m) LXM62 4.81 mA, 115 V, single phase 47.17 lbf.in (5.33 N.m) LXM62 4.58 mA, 230 V, single phase 41.33 lbf.in (4.67 N.m) LXM62 4.1 mA, 400 V, three phase 37.2 lbf.in (4.2 N.m) LXM62 3.73 mA, 480 V, three phase
Nominal speed	1000 rpm LXM52 4.81 mA, 115 V, single phase 2000 rpm LXM52 4.58 mA, 230 V, single phase 4000 rpm LXM52 4.1 mA, 400 V, three phase 5000 rpm LXM52 3.73 mA, 480 V, three phase 1000 rpm LXM62 4.81 mA, 115 V, single phase 2000 rpm LXM62 4.58 mA, 230 V, single phase 4000 rpm LXM62 4.1 mA, 400 V, three phase 5000 rpm LXM62 3.73 mA, 480 V, three phase
Maximum current Irms	17.4 A
Shaft end	Parallel key
Second shaft	Without second shaft end
Shaft diameter	0.7 in (19 mm)
Shaft length	1.6 in (40 mm)
Key width	0.2 in (6 mm)
IP degree of protection	IP65 standard

Encoder type	Multiturn SinCos Hiperface
Speed feedback resolution	128 periods
Holding brake	With
Holding torque	48.7 lbf.in (5.5 N.m)
Mounting support	International standard flange
Motor flange size	3.9 in (100 mm)
Electrical connection	Rotatable right-angled connectors
Torque constant	1.19 N.m/A 248 °F (120 °C)
Back emf constant	78 V/krpm
Number of motor poles	10
Rotor inertia	6.77 kg.cm ²
Stator resistance	1.97 Ohm
Stator inductance	8.24 mH
Stator electrical time constant	5 ms
Maximum radial force Fr	990 N 1000 rpm 790 N 2000 rpm 690 N 3000 rpm 620 N 4000 rpm 580 N 5000 rpm
Brake pull-in power	12 W
Type of cooling	Natural convection
Length	8.0 in (202.3 mm)
Centring collar diameter	3.7 in (95 mm)
Centring collar depth	0.1 in (3.5 mm)
Number of mounting holes	4
Mounting holes diameter	0.4 in (9 mm)
Circle diameter of the mounting holes	4.5 in (115 mm)
Net weight	14.1 lb(US) (6.4 kg)
Sizing reference	MH31002P
Temperature copper hot	275 °F (135 °C)

Packing Units

Unit Type of Package 1	PCE
Number of Units in Package 1	1
Package 1 Height	8.3 in (21.0 cm)
Package 1 Width	7.09 in (18.0 cm)
Package 1 Length	14.02 in (35.6 cm)
Package 1 Weight	12.39 lb(US) (5.62 kg)

Contractual warranty

Warranty (in months)	18
-----------------------------	----



Environmental Data

Schneider Electric aims to achieve Net Zero status by 2050 through supply chain partnerships, lower impact materials, and circularity via our ongoing “Use Better, Use Longer, Use Again” campaign to extend product lifetimes and recyclability.

[Environmental Data explained >](#)

[How we assess product sustainability >](#)

Use Better



Materials and Substances

EU RoHS Directive

[Compliant By Exemption](#)

PVC free

Yes

Use Longer



Lifetime extension

Repair

No

Use Again



Repack and remanufacture

Circularity Profile

No need of specific recycling operations