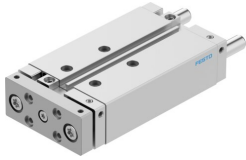


Guided drive DFM-20-80-B-PPV-A-GF

Part number: 8161416

FESTO



 General operating condition

Data sheet

| Feature | Value |
|---|--|
| Stroke | 80 mm |
| Piston diameter | 20 mm |
| Drive unit operating mode | Yoke |
| Cushioning | Pneumatic cushioning, adjustable at both ends |
| Mounting position | Any |
| Guide | Plain-bearing guide |
| Structural design | Guide |
| Position sensing | Via proximity switch |
| Operating pressure | 0.2 MPa ... 1 MPa |
| Operating pressure | 2 bar ... 10 bar |
| Mode of operation | Double-acting |
| Operating medium | Compressed air as per ISO 8573-1:2010 [7:4:4] |
| Information on operating and pilot media | Operation with oil lubrication possible (required for further use) |
| Corrosion resistance class (CRC) | 2 - Moderate corrosion stress |
| LABS (PWIS) conformity | VDMA24364-B1/B2-L |
| Cleanroom suitability, measured according to ISO 14644-14 | Class 6 according to ISO 14644-1 |
| Ambient temperature | -20 °C ... 80 °C |
| Impact energy in the end positions | 0.2 J |
| Theoretical force at 6 bar, retracting | 158 N |
| Theoretical force at 6 bar, advancing | 188 N |
| Alternative connections | See product drawing |
| Pneumatic connection | M5 |
| Note on materials | RoHS compliant |
| Cover material | Wrought aluminum alloy |
| Seals material | NBR |
| Housing material | Wrought aluminum alloy |
| Piston rod material | high-alloy stainless steel |