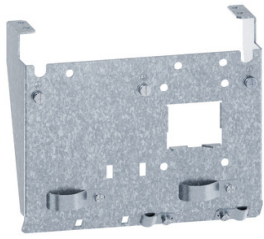


Product data sheet

Specifications



EMC plate kit, Altivar Machine ATV320, for variable speed drive size 6

VW3A9926

Main

Range of product	Altivar Machine ATV320
Accessory / separate part type	Mounting plate
Accessory / separate part category	Mounting and fixing accessories
Product compatibility	ATV320 variable speed drive 22 kW
Accessory / separate part destination	Variable speed drive

Packing Units

Unit Type of Package 1	PCE
Number of Units in Package 1	1
Package 1 Height	6.693 in (17.000 cm)
Package 1 Width	8.465 in (21.500 cm)
Package 1 Length	9.843 in (25.000 cm)
Package 1 Weight	24.127 oz (684.000 g)
Unit Type of Package 2	S03
Number of Units in Package 2	2
Package 2 Height	11.811 in (30.000 cm)
Package 2 Width	11.811 in (30.000 cm)
Package 2 Length	15.748 in (40.000 cm)
Package 2 Weight	4.619 lb(US) (2.095 kg)

Disclaimer: This documentation is not intended as a substitute for and is not to be used for determining suitability or reliability of these products for specific user applications



Environmental Data

Schneider Electric aims to achieve Net Zero status by 2050 through supply chain partnerships, lower impact materials, and circularity via our ongoing “Use Better, Use Longer, Use Again” campaign to extend product lifetimes and recyclability.

[Environmental Data explained >](#)

[How we assess product sustainability >](#)

Use Better



Materials and Substances

Packaging made with recycled cardboard

No

Packaging without single use plastic

No

EU RoHS Directive

[Compliant](#)

REACH Regulation

[Free of Substances of Very High Concern above the threshold](#)

Use Longer



Lifetime extension

Repair

No

Use Again



Repack and remanufacture

Take-back

No