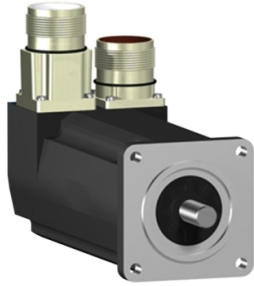


Product data sheet

Specifications



SH3 servomotor, 55mm, 1 stack, keyed Shaft, SinCos Singleturn 128, Brake, straight, IP65/65

SH30551P11F1100

⚠ Discontinued on: Oct 11, 2021

⚠ Discontinued

Main

Range Compatibility	PacDrive 3
Device short name	SH3
Product or Component Type	Servo motor

Complementary

Maximum mechanical speed	9000 rpm
[Us] rated supply voltage	115...480 V
Phase	Three phase
Continuous stall current	0.73 A
Continuous stall torque	3.72 lbf.in (0.42 N.m) 115...480 V three phase
Continuous power	290 W
Peak stall torque	13.3 lbf.in (1.5 N.m) 115...480 V three phase
Nominal output power	100 W 115 V single phase 210 W 230 V single phase 400 W 400 V three phase 440 W 480 V three phase
Nominal torque	4.4 lbf.in (0.5 N.m) 115 V single phase 4.4 lbf.in (0.5 N.m) 230 V single phase 3.10 lbf.in (0.35 N.m) 400 V three phase 3.10 lbf.in (0.35 N.m) 480 V three phase
Nominal speed	2000 rpm 115 V single phase 4000 rpm 230 V single phase 6000 rpm 400 V three phase 6000 rpm 480 V three phase
Maximum current Irms	2.9 A
Shaft end	Parallel key
Shaft diameter	0.4 in (9 mm)
Shaft length	0.8 in (20 mm)
Key width	0.1 in (3 mm)
IP degree of protection	IP65 motor: conforming to IEC 60034-5 IP65 shaft bushing: conforming to IEC 60034-5
Encoder type	Absolute single turn SinCos Hiperface
Speed feedback resolution	128 periods
Holding brake	With
Holding torque	7.08 lbf.in (0.8 N.m)

Price is "List Price" and may be subject to a trade discount – check with your local distributor or retailer for actual price.

Mounting Support	International standard flange
Motor flange size	2.2 in (55 mm)
Electrical Connection	Straight connector
Torque constant	0.58 N.m/A 248 °F (120 °C)
Back emf constant	40 V/krpm 68 °F (20 °C)
Number of motor poles	3
Rotor inertia	0.08 kg.cm ²
Stator resistance	41.8 Ohm
Stator inductance	108.72 mH
Maximum radial force Fr	340 N 1000 rpm 270 N 2000 rpm 240 N 3000 rpm 220 N 4000 rpm 200 N 5000 rpm 190 N 6000 rpm 180 N 7000 rpm 170 N 8000 rpm
Maximum axial force Fa	40 N
Type of cooling	Natural convection
Length	6.3 in (159 mm)
Centring collar diameter	1.6 in (40 mm)
Centring collar depth	0.08 in (2 mm)
Number of mounting holes	4
Mounting holes diameter	0.2 in (5.5 mm)
Circle diameter of the mounting holes	2.5 in (63 mm)
Product Weight	2.9 lb(US) (1.3 kg)
Sizing reference	SH30551P
Network number of phases	3
Temperature copper hot	266 °F (130 °C)
Electrical connection	straight connector

Packing Units

Unit Type of Package 1	PCE
Nbr. of units in pkg.	1
Package 1 Height	4.567 in (11.600 cm)
Package 1 Width	15.669 in (39.800 cm)
Package 1 Length	7.677 in (19.500 cm)
Package weight(Lbs)	2.641 lb(US) (1.198 kg)

Contractual warranty

Warranty (in months)	18
-----------------------------	----



Environmental Data

Schneider Electric aims to achieve Net Zero status by 2050 through supply chain partnerships, lower impact materials, and circularity via our ongoing “Use Better, Use Longer, Use Again” campaign to extend product lifetimes and recyclability.

[Environmental Data explained >](#)

[How we assess product sustainability >](#)

Use Better

Materials and Substances

EU RoHS Directive

[Compliant By Exemption](#)

California proposition 65

WARNING: This product can expose you to chemicals including: Lead and lead compounds, which is known to the State of California to cause cancer and birth defects or other reproductive harm. For more information go to www.P65Warnings.ca.gov

PVC free

Yes

Use Longer

Lifetime extension

Repair

No

Use Again

Repack and remanufacture

Circularity Profile

No need of specific recycling operations