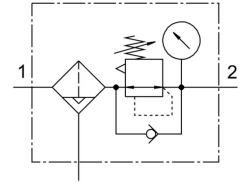


# Filter regulator MS6-LFR-1/2-D6-C-P-VC-AG-MPA-B

Part number: 8098302

FESTO



## Data sheet

Feature	Value
Size	6
Series	MS
Actuator lock	Rotary knob with detent
Mounting position	Vertical +/-5°
Grade of filtration	5 µm
Condensate drain	Fully automatic Manual, non-detenting
Design	Filter regulator with pressure gauge Directly actuated piston regulator
Max. condensate volume	27.3 ml
Controller function	Output pressure constant With secondary venting With return flow function
Symbol	00991587
Displayable units	MPa
Pressure gauge (ANALOG) or Pressure display (DIGITAL)	With pressure gauge
Operating pressure	0.2 MPa ... 1 MPa
Operating pressure	2 bar ... 10 bar
Pressure regulation range	0.3 bar ... 7 bar
Max. pressure hysteresis	0.035 MPa
Max. pressure hysteresis	0.35 bar
Max. pressure hysteresis	5.075 psi
Standard nominal flow rate	4750 l/min
Operating medium	Compressed air to ISO 8573-1:2010 [7:4:4] Inert gases
Corrosion resistance class CRC	1 - Low corrosion stress
Storage temperature	-5 °C ... 50 °C
Air purity class at output	Compressed air to ISO 8573-1:2010 [6:4:4]
Media temperature	5 °C ... 50 °C
Ambient temperature	5 °C ... 50 °C
Product weight	589 g
Type of mounting	Either: Front panel mounting In-line installation With accessories
Pneumatic connection, port 1	G1/2
Pneumatic connection, port 2	G1/2

<b>Feature</b>	<b>Value</b>
Note on materials	RoHS-compliant
Material seals	NBR
Material rotary knob	POM
Material spring	High-alloy steel Galvanised steel
Material filter	PE
Material housing	PA-reinforced
Material bowl	PC
Material valve stem	POM