

Product datasheet

Specifications



Discrete input module, Modicon X80, 16 isolated inputs, 100 to 120V AC

BMXDAI16142

Disclaimer: This documentation is not intended as a substitute for and is not to be used for determining suitability or reliability of these products for specific user applications



Environmental Data

Schneider Electric aims to achieve Net Zero status by 2050 through supply chain partnerships, lower impact materials, and circularity via our ongoing “Use Better, Use Longer, Use Again” campaign to extend product lifetimes and recyclability.

[Environmental Data explained >](#)

[How we assess product sustainability >](#)

Use Longer



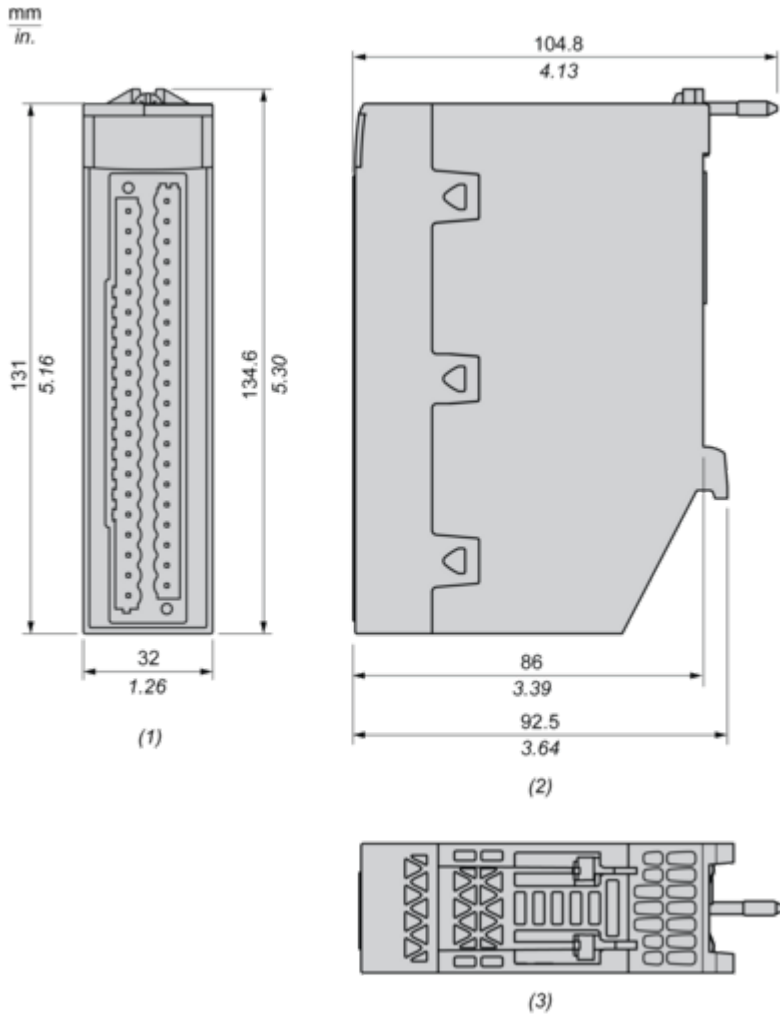
Lifetime extension

Repair

No

Dimensions Drawings

Dimensions

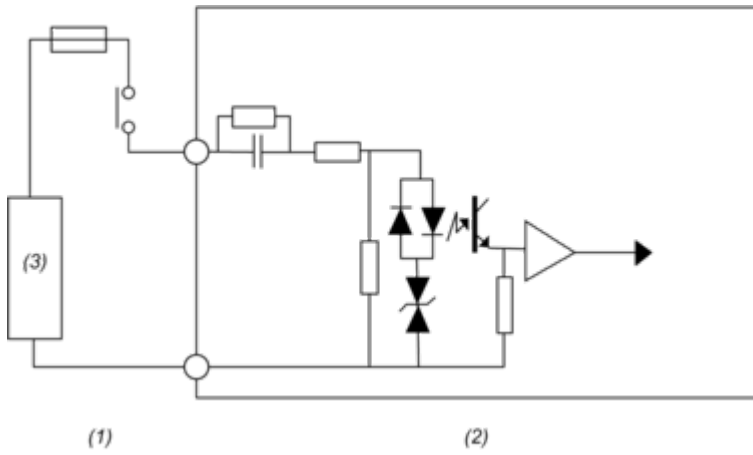


- (1) Front view
- (2) Right view
- (3) Top view

Connections and Schema

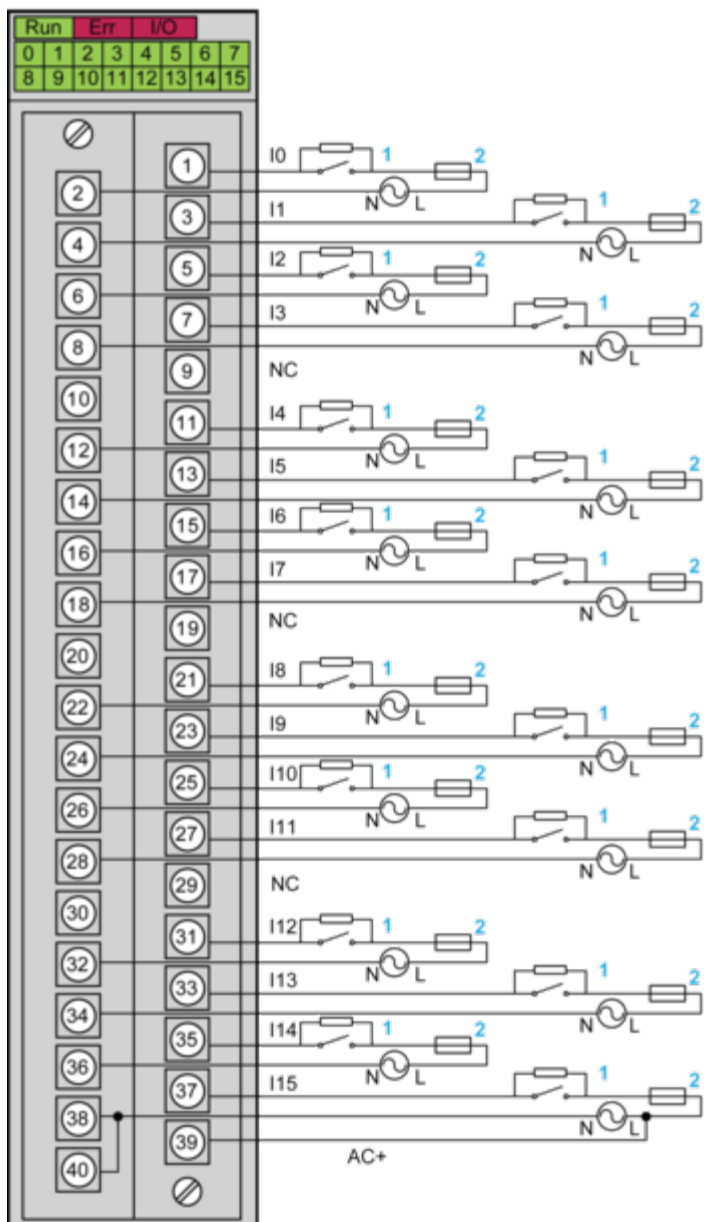
Connecting the Module

Input Circuit Diagram



- (1) Process
- (2) Module
- (3) Power supply

Module Connection



1 : External resistor for open wire detection function

2 : Fast blow fuse of 0.25A

AC+ : Input pin for IO supply monitoring function on channel 15

NC : Not connected

Power supply : 100...120 Vac

NOTE : The maximum input voltage is 132 Vrms@63 Hz. Any over voltage will damage the module.