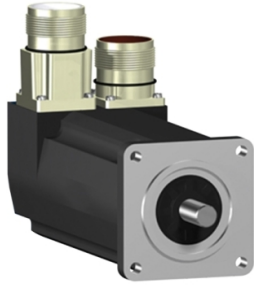


Product data sheet

Specifications



SH3 servomotor, 55mm, 2 stacks, smooth Shaft, SinCos Multiturn 128, no Brake, straight, IP54/65

SH30552P02A1000

⚠ Discontinued on: Jun 30, 2023

⚠ Discontinued

Main

Range compatibility	PacDrive 3
Device short name	SH3
Product or component type	Servo motor

Complementary

Maximum mechanical speed	9000 rpm
[Us] rated supply voltage	115...480 V
Network number of phases	Three phase
Continuous stall current	1.2 A
Continuous stall torque	6.28 lbf.in (0.71 N.m) 115...480 V three phase
Continuous power	530 W
Peak stall torque	22.1 lbf.in (2.5 N.m) 115...480 V three phase
Nominal output power	160 W 115 V single phase 310 W 230 V single phase 600 W 400 V three phase 670 W 480 V three phase
Nominal torque	6.82 lbf.in (0.77 N.m) 115 V single phase 6.64 lbf.in (0.75 N.m) 230 V single phase 5.58 lbf.in (0.63 N.m) 400 V three phase 5.58 lbf.in (0.63 N.m) 480 V three phase
Nominal speed	2000 rpm 115 V single phase 4000 rpm 230 V single phase 8000 rpm 400 V three phase 8000 rpm 480 V three phase
Maximum current Irms	4.8 A
Shaft end	Smooth shaft
Shaft diameter	0.4 in (9 mm)
Shaft length	0.8 in (20 mm)
IP degree of protection	IP54 shaft bushing without shaft seal ring: conforming to IEC 60034-5 IP65 motor: conforming to IEC 60034-5 IP65 shaft bushing: conforming to IEC 60034-5
Encoder type	Absolute multiturn SinCos Hiperface
Speed feedback resolution	128 periods
Holding brake	Without
Mounting support	International standard flange
Motor flange size	2.2 in (55 mm)

Electrical connection	Straight connector
Torque constant	0.59 N.m/A 248 °F (120 °C)
Back emf constant	40 V/krpm 68 °F (20 °C)
Number of motor poles	3.0
Rotor inertia	0.096 kg.cm ²
Stator resistance	17.4 Ohm
Stator inductance	53.54 mH
Maximum radial force Fr	370 N 1000 rpm 290 N 2000 rpm 260 N 3000 rpm 230 N 4000 rpm 220 N 5000 rpm 200 N 6000 rpm 190 N 7000 rpm 190 N 8000 rpm
Maximum axial force Fa	40 N
Type of cooling	Natural convection
Length	6.08 in (154.4 mm)
Centring collar diameter	1.6 in (40 mm)
Centring collar depth	0.08 in (2 mm)
Number of mounting holes	4
Mounting holes diameter	0.2 in (5.5 mm)
Circle diameter of the mounting holes	2.5 in (63 mm)
Net weight	3.3 lb(US) (1.5 kg)
Sizing reference	SH30552P
Network number of phases	3
Temperature copper hot	266 °F (130 °C)
Electrical connection	straight connector
Output current 3s peak	4.8 A
Inertia	0.0 kg.cm ² of brake 0.0 kg.cm ² of motor

Packing Units

Unit Type of Package 1	PCE
Number of Units in Package 1	1
Package 1 Height	4.5 in (11.5 cm)
Package 1 Width	7.5 in (19.0 cm)
Package 1 Length	15.6 in (39.5 cm)
Package 1 Weight	4.2 lb(US) (1.9 kg)

Contractual warranty

Warranty (in months)	18
----------------------	----



Environmental Data

Schneider Electric aims to achieve Net Zero status by 2050 through supply chain partnerships, lower impact materials, and circularity via our ongoing “Use Better, Use Longer, Use Again” campaign to extend product lifetimes and recyclability.

[Environmental Data explained >](#)

[How we assess product sustainability >](#)



Environmental footprint

Total lifecycle Carbon footprint	4 497 kg CO2 eq.
Carbon footprint of the manufacturing phase [A1 to A3]	36 kg CO2 eq.
Carbon footprint of the distribution phase [A4]	1 kg CO2 eq.
Carbon footprint of the installation phase [A5]	0.1 kg CO2 eq.
Carbon footprint of the use phase [B2, B3, B4, B6]	4 459 kg CO2 eq.
Carbon footprint of the end-of-life phase [C1 to C4]	0.8 kg CO2 eq.

Use Better



Materials and Substances

EU RoHS Directive	Compliant By Exemption
PVC free	Yes

Use Longer



Lifetime extension

Repair	No
--------	----

Use Again



Repack and remanufacture

Recyclability potential, in %	0
-------------------------------	---