



plug-in relay complete unit, 2 changeover contacts, 24 V AC, LED module red, base with logical isolation, spring-loaded terminal (push-in)

product brand name	SIRIUS
product designation	Coupling relay with plug-in relay
product type designation	LZS
General technical data	
display version LED	Yes
percental drop-out voltage related to the input voltage	15 %
operating frequency without load	36 000 1/h
operating frequency with load	360 1/h
switching behavior	monostable
mechanical service life (operating cycles) typical	5 000 000
electrical endurance (operating cycles) at AC-15 at 230 V typical	80 000
thermal current	8 A
reference code according to IEC 81346-2	K
Substance Prohibittance (Date)	05/01/2012
Net Weight	0.059 kg
Control circuit/ Control	
control supply voltage at AC	
• at 50 Hz rated value	24 V
• at 60 Hz rated value	24 V
control supply voltage frequency	
• 1 rated value	50 Hz
• 2 rated value	60 Hz
supply voltage frequency for auxiliary and control circuit rated value	50 ... 60 Hz
operating range factor control supply voltage rated value at AC at 50 Hz	
• initial value	0.9
• full-scale value	1.1
operating range factor control supply voltage rated value at AC at 60 Hz	
• initial value	0.9
• full-scale value	1.1
Switching Function	
design of the switching function	changeover switch
Mechanical data	
product component plug-in socket	Yes
design of the snap-on socket base	Socket with logic isolation
design of the relay operating mechanism	poled
Short-circuit protection	
design of the fuse link for short-circuit protection of the auxiliary	fuse gG: 10 A

switch required	
Auxiliary circuit	
type of switching contact	Changeover contact
material of switching contacts	AgNi 90/10
number of NC contacts for auxiliary contacts	0
number of NO contacts for auxiliary contacts	0
number of CO contacts for auxiliary contacts	2
Main circuit	
type of voltage	AC
Display	
display version as status display by LED	LED red
Connections/ Terminals	
product function removable terminal	No
type of electrical connection	spring-loaded terminals
type of connectable conductor cross-sections	
• solid	1x (0,75 ... 1,5), 2x (0,75 ... 1,0), 2x 1,5
• finely stranded with core end processing	1x (0,75 ... 1,5), 2x 0,75
• finely stranded without core end processing	1x (0,75 ... 1,5), 2x (0,75 ... 1,0), 2x 1,5
• for AWG cables solid	1x (18 ... 16), 2x (18 ... 16)
• for AWG cables stranded	1x (18 ... 16), 2x (18 ... 16)
connectable conductor cross-section	
• solid	0.75 ... 1.5 mm ²
• finely stranded with core end processing	0.75 ... 1.5 mm ²
• finely stranded without core end processing	0.75 ... 1.5 mm ²
AWG number as coded connectable conductor cross section	
• solid	18 ... 16
• stranded	18 ... 16
Installation/ mounting/ dimensions	
mounting position	any
fastening method	snap-on mounting
height	98 mm
width	15.5 mm
depth	71 mm
required spacing	
• with side-by-side mounting	
— forwards	0 mm
— backwards	0 mm
— upwards	0 mm
— downwards	0 mm
— at the side	0 mm
• for grounded parts	
— forwards	0 mm
— backwards	0 mm
— upwards	0 mm
— at the side	0 mm
— downwards	0 mm
• for live parts	
— forwards	0 mm
— backwards	0 mm
— upwards	0 mm
— downwards	0 mm
— at the side	0 mm
Ambient conditions	
ambient temperature	
• during operation	-40 ... +70 °C
• during storage	-20 ... +70 °C
• during transport	-20 ... +70 °C
Approvals Certificates	

[Environmental Confirmations](#)



[Type Test Certificates/Test Report](#)

other

[Confirmation](#)

[Confirmation](#)



Further information

Information on the packaging

<https://support.industry.siemens.com/cs/ww/en/view/109813875>

Information for data generation and storage

<https://support.industry.siemens.com/cs/ww/en/view/109995012>

Information- and Downloadcenter (Catalogs, Brochures,...)

<https://www.siemens.com/ic10>

Industry Mall (Online ordering system)

<https://mall.industry.siemens.com/mall/en/en/Catalog/product?mlfb=LZS:RT4D4R24>

Cax online generator

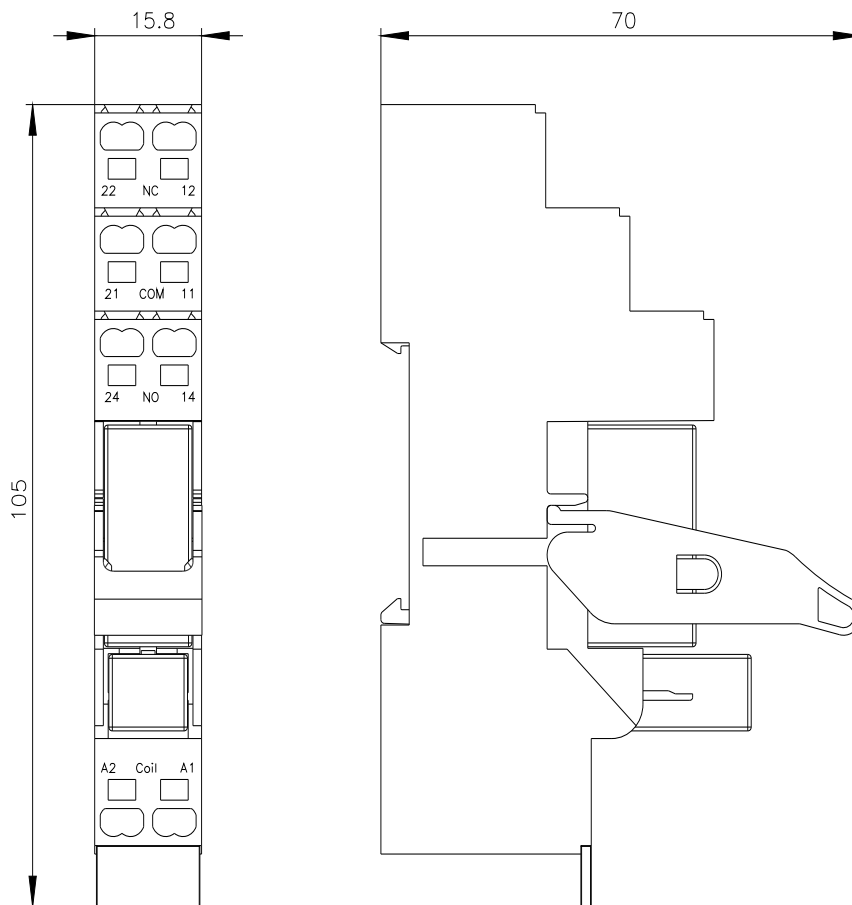
<https://support.automation.siemens.com/WW/CAXorder/default.aspx?lang=en&mlfb=LZS:RT4D4R24>

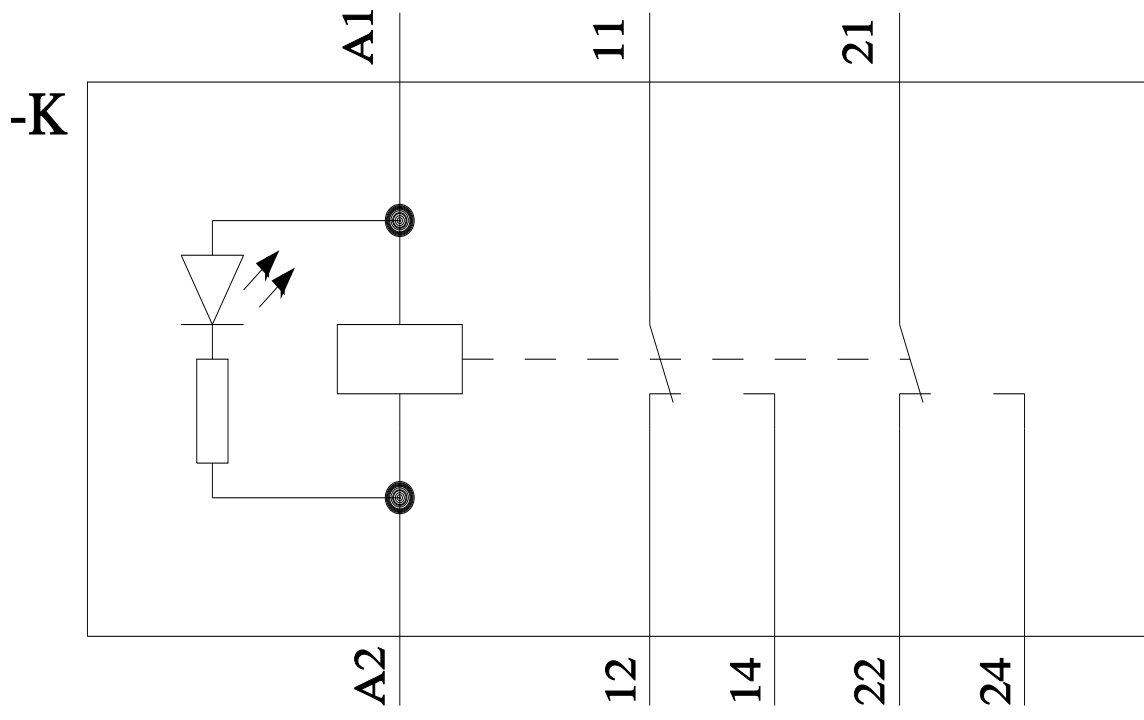
Service&Support (Manuals, Certificates, Characteristics, FAQs,...)

<https://support.industry.siemens.com/cs/ww/en/ps/LZS:RT4D4R24>

Image database (product images, 2D dimension drawings, 3D models, device circuit diagrams, EPLAN macros, ...)

https://www.automation.siemens.com/bilddb/cax_de.aspx?mlfb=LZS:RT4D4R24&lang=en





last modified:

4/2/2025