

Inductive proximity sensors

XS range, general purpose

Basic, cylindrical, metal, flush and non flush mountable

Three-wire DC, solid-state output



XS118BL●●L●



XS118BL●●M12



XS218BL●●L●



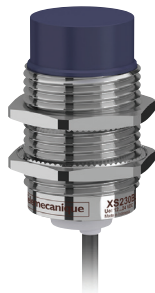
XS218BL●●M12



XS130BL●●L●



XS130BL●●M12



XS230BL●●L●



XS230BL●●M12

References (continued)

Sensing distance (Sn) mm	Function	Output	Connection	Reference	Masse kg
Ø 18, threaded M18 x 1					
Three-wire 12-24 V, flush mountable					
5	NO	PNP	Pre-cabled (L = 2 m)	XS118BLPAL2	0.105
			Pre-cabled (L = 5 m)	XS118BLPAL5	0.175
			M12 connector	XS118BLPAM12	0.035
	NPN	Pre-cabled (L = 2 m)	XS118BLNAL2	0.105	
		Pre-cabled (L = 5 m)	XS118BLNAL5	0.175	
		M12 connector	XS118BLNAM12	0.035	
NC	PNP	Pre-cabled (L = 2 m)	XS118BLPBL2	0.105	
		M12 connector	XS118BLPBM12	0.035	

Three-wire 12-24 V, non flush mountable

8	NO	PNP	Pre-cabled (L = 2 m)	XS218BLPAL2	0.105
			Pre-cabled (L = 5 m)	XS218BLPAL5	0.175
			M12 connector	XS218BLPAM12	0.035
	NPN	Pre-cabled (L = 2 m)	XS218BLNAL2	0.105	
		Pre-cabled (L = 5 m)	XS218BLNAL5	0.175	
		Pre-cabled (L = 7 m)	XS218BLNAL7	0.220	
M12 connector			XS218BLNAM12	0.035	
	NC	PNP	Pre-cabled (L = 2 m)	XS218BLPBL2	0.105
NPN			Pre-cabled (L = 2 m)	XS218BLNBL2	0.105

Ø 30, threaded M30 x 1.5

Three-wire 12-24 V, flush mountable

10	NO	PNP	Pre-cabled (L = 2 m)	XS130BLPAL2	0.165
			M12 connector	XS130BLPAM12	0.075
			NPN	Pre-cabled (L = 2 m)	XS130BLNAL2
	Pre-cabled (L = 3 m)			XS130BLNAL3	0.190
		M12 connector		XS130BLNAM12	0.075
	NC	PNP	Pre-cabled (L = 2 m)	XS130BLPBL2	0.165
M12 connector			XS130BLPBM12	0.075	

Three-wire 12-24 V, non flush mountable

15	NO	PNP	Pre-cabled (L = 2 m)	XS230BLPAL2	0.155
			Pre-cabled (L = 5 m)	XS230BLPAL5	0.225
			M12 connector	XS230BLPAM12	0.085
	NPN	Pre-cabled (L = 2 m)	XS230BLNAL2	0.155	
		Pre-cabled (L = 7 m)	XS230BLNAL7	0.225	
		M12 connector	XS230BLNAM12	0.085	
NC	PNP	Pre-cabled (L = 2 m)	XS230BLPBL2	0.155	