

Product data sheet

Specifications



Socket, Harmony Electromechanical Relays, Screw clamp socket with maintaining clamp, for RXG1 relays, 10A, mixed contact terminal

RGZE05E

Main

Range of product	Harmony Electromechanical Relays
Product or component type	Socket
Product compatibility	Plug-in relay RXG with 1 C/O contact
[Ui] rated insulation voltage	250 V

Complementary

[Uimp] rated impulse withstand voltage	4 kV between coil and contact with basic insulation 4 kV between terminals and DIN rail with basic insulation
[Ue] rated operational voltage	250 V conforming to IEC 300 V conforming to UL
Dielectric strength	4 kV between coil and contact with basic insulation 3 kV between terminals and DIN rail with basic insulation
Shape of pin	Flat
Connections - terminals	Screw terminals, 1 x 0.5...1 x 2.5 mm ² (AWG 20...AWG 14) flexible with cable end Screw terminals, 2 x 0.5...2 x 1 mm ² (AWG 20...AWG 17) flexible with cable end Screw terminals, 1 x 0.5...1 x 2.5 mm ² (AWG 20...AWG 14) solid without cable end Screw terminals, 2 x 0.5...2 x 1.5 mm ² (AWG 20...AWG 16) solid without cable end
Fixing mode	Clip-on (35 mm symmetrical DIN rail)
Length	69.6 mm
Contact terminal arrangement	Mixed
Overvoltage category	III
Pollution degree	3
Width	16 mm
Height	50.2 mm
Net weight	0.024 kg

Environment

Standards	IEC 61984
Product certifications	CSA UL EAC
Marking	CE
Ambient air temperature for storage	-40...85 °C
Ambient air temperature for operation	-40...70 °C
IP degree of protection	IP20
Relative humidity	10...95 %

Packing Units

Unit Type of Package 1	PCE
Number of Units in Package 1	1
Package 1 Height	1.700 cm
Package 1 Width	3.400 cm
Package 1 Length	7.400 cm
Package 1 Weight	23.000 g
Unit Type of Package 2	BB1
Number of Units in Package 2	10
Package 2 Height	4.100 cm
Package 2 Width	8.200 cm
Package 2 Length	16.700 cm
Package 2 Weight	263.000 g
Unit Type of Package 3	S03
Number of Units in Package 3	360
Package 3 Height	30.000 cm
Package 3 Width	30.000 cm
Package 3 Length	40.000 cm
Package 3 Weight	10.007 kg

Contractual warranty

Warranty (in months)	60
----------------------	----



Environmental Data

Schneider Electric aims to achieve Net Zero status by 2050 through supply chain partnerships, lower impact materials, and circularity via our ongoing “Use Better, Use Longer, Use Again” campaign to extend product lifetimes and recyclability.

[Environmental Data explained >](#)

[How we assess product sustainability >](#)



Environmental footprint

Total lifecycle Carbon footprint	0.3 kg CO2 eq.
Carbon footprint of the manufacturing phase [A1 to A3]	0.3 kg CO2 eq.
Carbon footprint of the distribution phase [A4]	0 kg CO2 eq.
Carbon footprint of the installation phase [A5]	0 kg CO2 eq.
Carbon footprint of the use phase [B2, B3, B4, B6]	0 kg CO2 eq.
Carbon footprint of the end-of-life phase [C1 to C4]	0 kg CO2 eq.
Environmental Disclosure	Product Environmental Profile

Use Better



Materials and Substances

Packaging made with recycled cardboard	No
Packaging without single use plastic	No
PVC free	Yes
Silicone-free	Yes

Use Longer



Lifetime extension

Repair	No
--------	----

Use Again

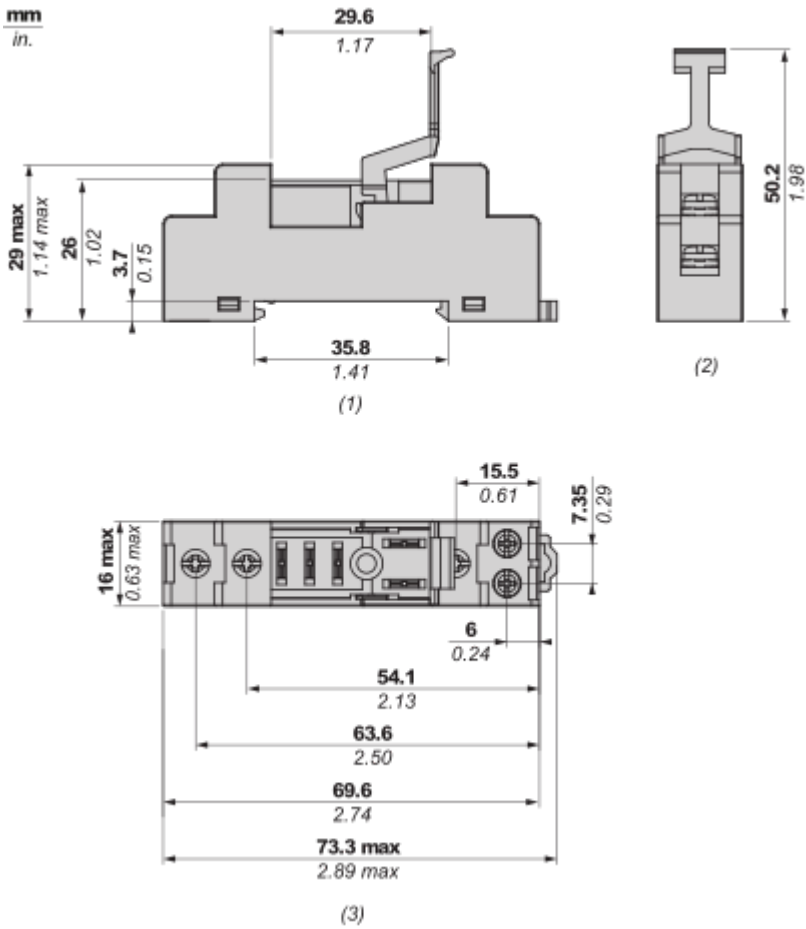


Repack and remanufacture

Recyclability potential, in %	34
End of life manual availability	End of Life Information
Take-back	No

Dimensions Drawings

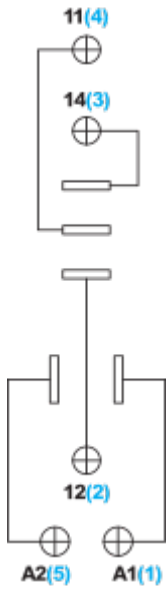
Dimensions



- (1) Side view
- (2) Top view
- (3) Front view

Connections and Schema

Wiring



Symbols shown in blue correspond to NEMA marking.

Installation



Note : Wiring recommendations for exposed conductor length

Technical Illustration

Dimensions

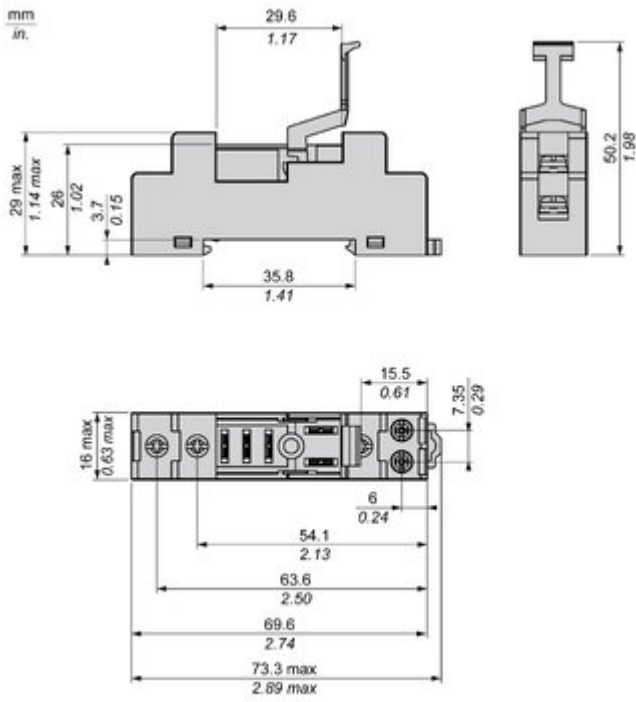
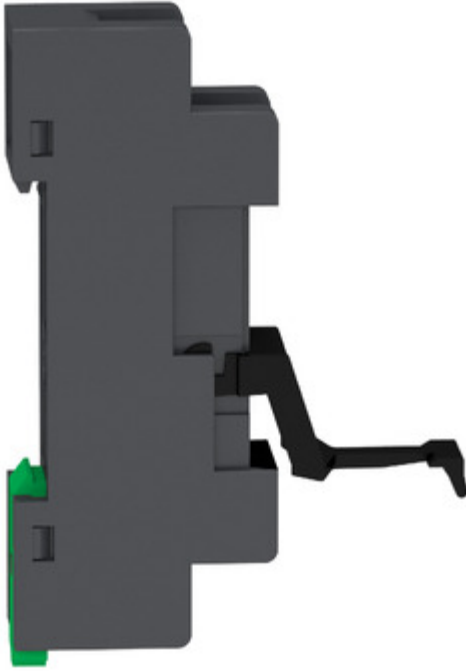


Image of product / Alternate images

Alternative





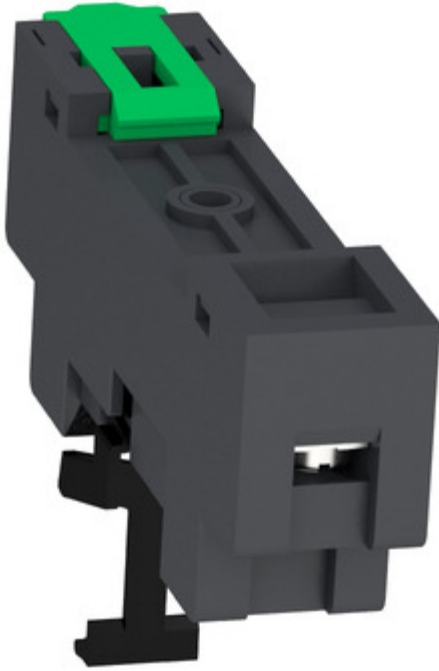


Image of product in real life situation

