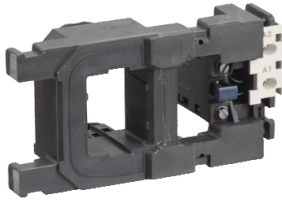


# Product datasheet

Specifications



## contactor coil - LX1F - 200..220 V AC - 50/60 Hz

LX1FH22062

⚠ Discontinued on: 23 Jan 2021

⚠ Discontinued

### Main

Range	TeSys
Product or component type	Contactor coil
Device short name	LX1FH
Range compatibility	TeSys TeSys F LC1F contactor
Product compatibility	LC1F330 LC1F265
Control circuit type	AC at 50/60 Hz
[Uc] control circuit voltage	200 V AC 50 Hz 200...220 V AC 60 Hz
Operating time	100...170 ms opening 40...65 ms closing
Maximum operating rate	2400 cyc/h 55 °C

### Complementary

Coil technology	Without built-in suppressor module
Control circuit voltage limits	Drop-out: 0.35...0.55 U <sub>c</sub> 50/60 Hz (at 55 °C) Operational: 0.85...1.1 U <sub>c</sub> 50/60 Hz (at 55 °C)
Heat dissipation	8 W at 40...400 Hz

### Environment

Ambient air temperature for operation	-5...55 °C
---------------------------------------	------------

### Packing Units

Unit Type of Package 1	PCE
Number of Units in Package 1	1
Package 1 Height	9.500 cm
Package 1 Width	10.000 cm
Package 1 Length	19.000 cm
Package 1 Weight	860.000 g
Unit Type of Package 2	S03
Number of Units in Package 2	12
Package 2 Height	30.000 cm
Package 2 Width	30.000 cm

---

Package 2 Length	40.000 cm
------------------	-----------

---

Package 2 Weight	10.860 kg
------------------	-----------

## Contractual warranty

---

Warranty (in months)	18
----------------------	----



## Environmental Data

Schneider Electric aims to achieve Net Zero status by 2050 through supply chain partnerships, lower impact materials, and circularity via our ongoing “Use Better, Use Longer, Use Again” campaign to extend product lifetimes and recyclability.

[Environmental Data explained >](#)

[How we assess product sustainability >](#)



### Environmental footprint

Total lifecycle Carbon footprint	70 kg CO2 eq.
Carbon footprint of the manufacturing phase [A1 to A3]	0.9 kg CO2 eq.
Carbon footprint of the distribution phase [A4]	0 kg CO2 eq.
Carbon footprint of the installation phase [A5]	0 kg CO2 eq.
Carbon footprint of the use phase [B2, B3, B4, B6]	69 kg CO2 eq.
Carbon footprint of the end-of-life phase [C1 to C4]	0.3 kg CO2 eq.

## Use Better



### Materials and Substances

Packaging made with recycled cardboard	Yes
Packaging without single use plastic	Yes
SCIP Number	975ba4d0-bc82-40e2-8faa-6f6819f63b0c
EU RoHS Directive	<a href="#">Compliant By Exemption</a>
REACH Regulation	<a href="#">Reference contains Substances of Very High Concern above the threshold</a>

## Use Longer



### Lifetime extension

Repair	No
--------	----

## Use Again



### Repack and remanufacture

Recyclability potential, in %	95
Take-back	No
WEEE Label	 The product must be disposed on European Union markets following specific waste collection and never end up in rubbish bins