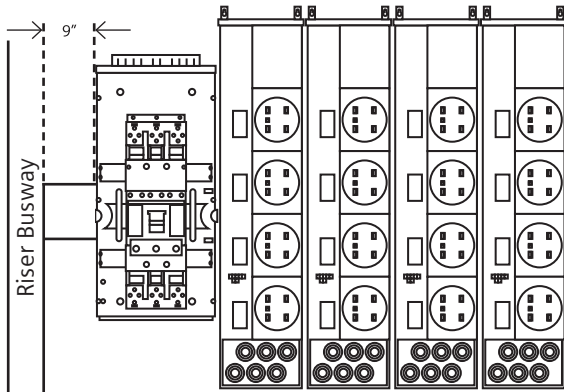


Power Mod

Applications: Bus Duct Solutions

Figure 11



Example of WXB or WXS cross bus mains protecting stacks being fed by busway

Figure 12

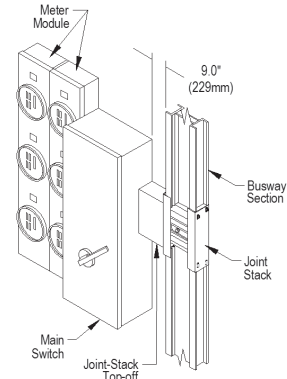
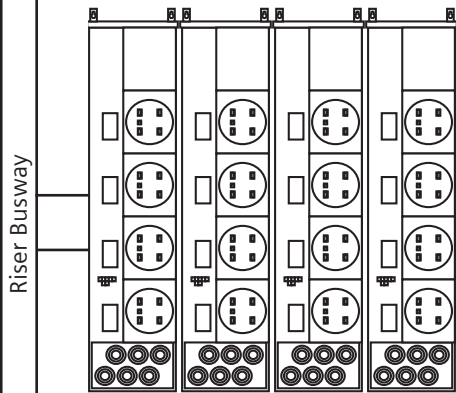
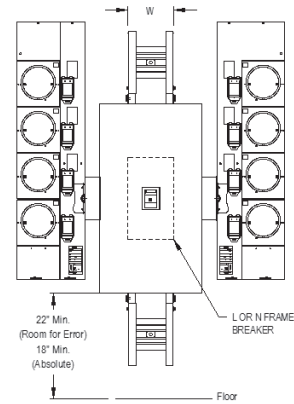


Figure 13



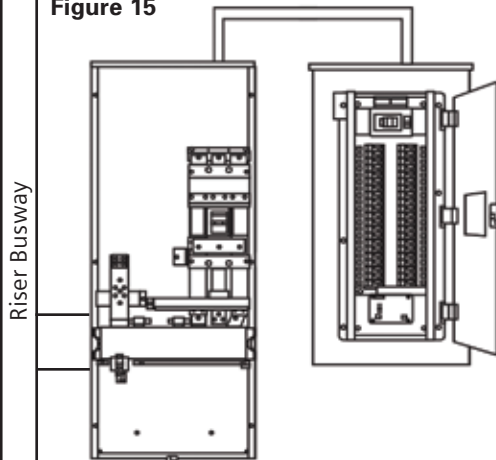
Example of stacks fed by busway tapstack with an upstream main

Figure 14



Example of stacks being fed by a meter center cubicle built inline with busway

Figure 15



A WB main can be used to back-feed panel board off of busway

Please Note:

- There typically will be an offset off of the wall coming off of busway
- Strut or artificial walls can be used to mount power mod when fed by busway
- When fed by a cubicle tapstacks are not necessary
- Tapstacks are busway products and must be used when connecting Power Mod products to busway when a cubicle is not used
- Tapstacks and cubicles transpose busway phasing to match power mod phasing