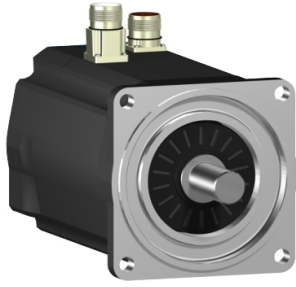


Product data sheet

Specifications



SH3 servomotor, 100mm, 1 stack, high Torque, smooth Shaft, SinCos Singleturn 128, no Brake, straight, IP54/65

SH31001M01A1000

! Discontinued

! Discontinued on: Jul 23, 2025

! End-of-service on: Dec 31, 2025

Main

Range compatibility	PacDrive 3
Device short name	SH3
Product or component type	Servo motor

Complementary

Maximum mechanical speed	6000 rpm
[Us] rated supply voltage	115...480 V
Network number of phases	Three phase
Continuous stall current	1.8 A
Continuous stall torque	26.02 lbf.in (2.94 N.m) 115...480 V three phase
Continuous power	660 W
Peak stall torque	85.0 lbf.in (9.6 N.m) 115...480 V three phase
Nominal output power	210 W 115 V single phase 410 W 230 V single phase 790 W 400 V three phase 930 W 480 V three phase
Nominal torque	24.8 lbf.in (2.8 N.m) 115 V single phase 23.99 lbf.in (2.71 N.m) 230 V single phase 22.30 lbf.in (2.52 N.m) 400 V three phase 22.30 lbf.in (2.52 N.m) 480 V three phase
Nominal speed	625 rpm 115 V single phase 1250 rpm 230 V single phase 2500 rpm 400 V three phase 3000 rpm 480 V three phase
Maximum current Irms	6.3 A
Shaft end	Smooth shaft
Shaft diameter	0.7 in (19 mm)
Shaft length	1.6 in (40 mm)
Key width	0.2 in (6 mm)
IP degree of protection	IP54 shaft bushing without shaft seal ring: conforming to IEC 60034-5 IP65 motor: conforming to IEC 60034-5 IP65 shaft bushing: conforming to IEC 60034-5
Encoder type	Absolute single turn SinCos Hiperface
Speed feedback resolution	128 periods

Holding brake	Without
Mounting support	International standard flange
Motor flange size	3.9 in (100 mm)
Electrical connection	Straight connector
Torque constant	1.63 N.m/A 248 °F (120 °C)
Back emf constant	115 V/krpm 68 °F (20 °C)
Number of motor poles	4
Rotor inertia	1.4 kg.cm ²
Stator resistance	13.9 Ohm
Stator inductance	99.15 mH
Maximum radial force Fr	900 N 1000 rpm 720 N 2000 rpm 630 N 3000 rpm 570 N 4000 rpm 530 N 5000 rpm
Maximum axial force Fa	160 N
Type of cooling	Natural convection
Length	6.6 in (168.5 mm)
Centring collar diameter	3.7 in (95 mm)
Centring collar depth	0.1 in (3.5 mm)
Number of mounting holes	4
Mounting holes diameter	0.4 in (9.0 mm)
Circle diameter of the mounting holes	4.5 in (115 mm)
Net weight	9.5 lb(US) (4.3 kg)
Sizing reference	SH31001M
Network number of phases	3
Temperature copper hot	266 °F (130 °C)
Electrical connection	straight connector

Packing Units

Unit Type of Package 1	PCE
Number of Units in Package 1	1

Contractual warranty

Warranty (in months)	18
-----------------------------	----



Environmental Data

Schneider Electric aims to achieve Net Zero status by 2050 through supply chain partnerships, lower impact materials, and circularity via our ongoing “Use Better, Use Longer, Use Again” campaign to extend product lifetimes and recyclability.

[Environmental Data explained >](#)

[How we assess product sustainability >](#)

Use Better



Materials and Substances

Packaging made with recycled cardboard **Yes**

Packaging without single use plastic **No**

Use Longer



Lifetime extension

Repair **No**

Use Again



Repack and remanufacture

Take-back **Nej**