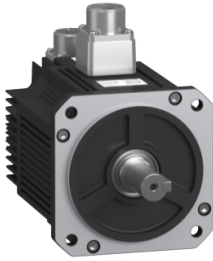


Product datasheet

Specifications



servo motor BCH16, Lexium 16D,
130mm, shaft 22mm, 1.5kW, High
inertia, 2000rpm, brake

BCH16HM15230F6C2

Main

Range compatibility	Easy Lexium 16
Device short name	BCH16
Product or component type	Servo motor

Complementary

Maximum mechanical speed	3000 rpm
[Us] rated supply voltage	220 V
Network number of phases	3 phases
Continuous stall current	7.9 A
Continuous stall torque	7.16 N.m for LXM16D at 14.43 A, 220 V, single phase
Continuous power	850 W
Peak stall torque	21.48 N.m for LXM16D at 14.43 A, 220 V, single phase
Nominal output power	850 W for LXM16D at 14.43 A, 220 V, single phase
Nominal torque	5.39 N.m for LXM16D at 14.43 A, 220 V, single phase
Nominal speed	1500 rpm for LXM16D at 14.43 A, 220 V, single phase
Maximum current Irms	24.9 A for LXM16D at 1.5 kW, 220 V
Maximum permanent current	18.1 A
Product compatibility	LXM16D motion servo motors motor at 0.85 kW, 220 V, single phase
Shaft end	Parallel key
Second shaft	Without second shaft end
Shaft diameter	22 mm
Shaft length	35 mm
Key width	8 mm
Feedback type	2500 incremental encoder
Holding brake	With
Holding torque	15.0 N.m built-in
Mounting support	Asian standard flange
Motor flange size	130 mm
Electrical connection	Connector MIL
Torque constant	0.75 N.m/A at 20 °C
Back emf constant	51.7 V/krpm at 20 °C

Rotor inertia	14.78 kg.cm ²
Stator resistance	0.65 Ohm at 20 °C
Stator inductance	5.5 mH at 20 °C
Stator electrical time constant	8.46 ms at 20 °C
Maximum radial force Fr	498.82 N at 2000 rpm
Maximum axial force Fa	176.4 N
Brake pull-in power	19.6 W
Type of cooling	Natural convection
Length	196.9 mm
Centring collar diameter	110 mm
Centring collar depth	6 mm
Number of mounting holes	4
Mounting holes diameter	9 mm
Circle diameter of the mounting holes	145 mm
Distance shaft shoulder-flange	50 mm
Width	130 mm
Height	183.4 mm
Depth	196.9 mm
Net weight	8.1 kg

Environment

IP degree of protection	IP65 IM B5, IM V1 IP65 IM V3
Ambient air temperature for operation	0...40 °C

Packing Units

Unit Type of Package 1	PCE
Number of Units in Package 1	1
Package 1 Height	27.5 cm
Package 1 Width	18 cm
Package 1 Length	36 cm
Package 1 Weight	9.41 kg

Contractual warranty

Warranty (in months)	18
-----------------------------	----



Environmental Data

Schneider Electric aims to achieve Net Zero status by 2050 through supply chain partnerships, lower impact materials, and circularity via our ongoing “Use Better, Use Longer, Use Again” campaign to extend product lifetimes and recyclability.

[Environmental Data explained >](#)

[How we assess product sustainability >](#)



Environmental footprint

Total lifecycle Carbon footprint	7 793 kg CO2 eq.
Environmental Disclosure	Product Environmental Profile
Carbon footprint of the manufacturing phase [A1 to A3]	150 kg CO2 eq.
Carbon footprint of the distribution phase [A4]	1 kg CO2 eq.
Carbon footprint of the installation phase [A5]	0.1 kg CO2 eq.
Carbon footprint of the use phase [B2, B3, B4, B6]	7 641 kg CO2 eq.
Carbon footprint of the end-of-life phase [C1 to C4]	1 kg CO2 eq.

Use Better



Materials and Substances

Packaging without single use plastic	No
EU RoHS Directive	Compliant with Exemptions
REACH Regulation	REACH Declaration

Use Longer



Lifetime extension

Repair	No
--------	----

Use Again



Repack and remanufacture

Recyclability potential, in %	93
End of life manual availability	End of Life Information
Take-back	No
WEEE Label	 The product must be disposed on European Union markets following specific waste collection and never end up in rubbish bins