



power contactor, AC-3e/AC-3, 9 A, 4 kW / 400 V, 3-pole, 220 V DC, auxiliary contacts: 1 NO + 1 NC, spring-loaded terminal, size: S0

|  |                           |
|--|---------------------------|
| <b>product brand name</b>  | SIRIUS                    |
| <b>product designation</b>   | Power contactor           |
| <b>product type designation</b>  | 3RT2                      |
| <b>General technical data</b>  |                           |
| <b>size of contactor</b>   | S0                        |
| <b>product extension</b>   |                           |
| • function module for communication  | No                        |
| • auxiliary switch   | Yes                       |
| <b>power loss [W] for rated value of the current</b>   |                           |
| • at AC in hot operating state   | 0.6 W                     |
| • at AC in hot operating state per pole  | 0.2 W                     |
| • without load current share typical   | 5.9 W                     |
| <b>type of calculation of power loss current-dependent</b>   | quadratic                 |
| <b>insulation voltage</b>  |                           |
| • of main circuit with degree of pollution 3 rated value   | 690 V                     |
| • of auxiliary circuit with degree of pollution 3 rated value  | 690 V                     |
| <b>surge voltage resistance</b>  |                           |
| • of main circuit rated value  | 6 kV                      |
| • of auxiliary circuit rated value   | 6 kV                      |
| maximum permissible voltage for protective separation between coil and main contacts according to EN 60947-1 | 400 V                     |
| <b>shock resistance at rectangular impulse</b>   |                           |
| • at DC  | 10g / 5 ms, 7,5g / 10 ms  |
| <b>shock resistance with sine pulse</b>  |                           |
| • at DC  | 15 g / 5 ms, 10 g / 10 ms |
| <b>mechanical service life (operating cycles)</b>  |                           |
| • of contactor typical   | 10 000 000                |
| • of the contactor with added electronically optimized auxiliary switch block typical                        | 5 000 000                 |
| • of the contactor with added auxiliary switch block typical   | 10 000 000                |
| <b>reference code according to IEC 81346-2</b>   | Q                         |
| <b>Substance Prohibitance (day/month/year)</b>   | 10/01/2009                |
| <b>Net Weight</b>  | 0.629 g                   |
| <b>Ambient conditions</b>  |                           |
| installation altitude at height above sea level maximum  | 2 000 m                   |
| <b>ambient temperature</b>   |                           |
| • during operation   | -25 ... +60 °C            |
| • during storage   | -55 ... +80 °C            |
| <b>relative humidity minimum</b>   | 10 %                      |
| <b>relative humidity at 55 °C according to IEC 60068-2-30</b>  | 95 %                      |

|  |                    |
|--|--------------------|
| <b>maximum</b>   |                    |
| <b>Main circuit</b>  |                    |
| <b>number of poles for main current circuit</b>                        | 3                  |
| <b>number of NO contacts for main contacts</b>                         | 3                  |
| <b>number of NC contacts for main contacts</b>                         | 0                  |
| <b>operating voltage</b>   |                    |
| • at AC-3 rated value maximum  | 690 V              |
| • at AC-3e rated value maximum   | 690 V              |
| <b>operational current</b>   |                    |
| • at AC-1 at 400 V at ambient temperature 40 °C rated value            | 40 A               |
| • at AC-1  |                    |
| — up to 690 V at ambient temperature 40 °C rated value                 | 40 A               |
| — up to 690 V at ambient temperature 60 °C rated value                 | 35 A               |
| • at AC-3  |                    |
| — at 400 V rated value   | 9 A                |
| — at 500 V rated value   | 9 A                |
| — at 690 V rated value   | 9 A                |
| • at AC-3e   |                    |
| — at 400 V rated value   | 9 A                |
| — at 500 V rated value   | 9 A                |
| — at 690 V rated value   | 9 A                |
| • at AC-4 at 400 V rated value   | 8.5 A              |
| • at AC-5a up to 690 V rated value                                     | 35.2 A             |
| • at AC-5b up to 400 V rated value                                     | 7.4 A              |
| • at AC-6a   |                    |
| — up to 230 V for current peak value n=20 rated value                  | 11.4 A             |
| — up to 400 V for current peak value n=20 rated value                  | 11.4 A             |
| — up to 500 V for current peak value n=20 rated value                  | 9.1 A              |
| — up to 690 V for current peak value n=20 rated value                  | 9 A                |
| • at AC-6a   |                    |
| — up to 230 V for current peak value n=30 rated value                  | 7.6 A              |
| — up to 400 V for current peak value n=30 rated value                  | 7.6 A              |
| — up to 500 V for current peak value n=30 rated value                  | 6.1 A              |
| — up to 690 V for current peak value n=30 rated value                  | 6.1 A              |
| minimum cross-section in main circuit at maximum AC-1 rated value      | 10 mm <sup>2</sup> |
| <b>operational current for approx. 200000 operating cycles at AC-4</b> |                    |
| • at 400 V rated value   | 4.1 A              |
| • at 690 V rated value   | 3.3 A              |
| <b>operational current</b>   |                    |
| • <b>at 1 current path at DC-1</b>                                     |                    |
| — at 24 V rated value  | 35 A               |
| — at 60 V rated value  | 20 A               |
| — at 110 V rated value   | 4.5 A              |
| — at 220 V rated value   | 1 A                |
| — at 440 V rated value   | 0.4 A              |
| — at 600 V rated value   | 0.25 A             |
| • <b>with 2 current paths in series at DC-1</b>                        |                    |
| — at 24 V rated value  | 35 A               |
| — at 60 V rated value  | 35 A               |
| — at 110 V rated value   | 35 A               |
| — at 220 V rated value   | 5 A                |
| — at 440 V rated value   | 1 A                |
| — at 600 V rated value   | 0.8 A              |
| • <b>with 3 current paths in series at DC-1</b>                        |                    |
| — at 24 V rated value  | 35 A               |

|   |   |
|---|---|
| — at 60 V rated value   | 35 A  |
| — at 110 V rated value  | 35 A  |
| — at 220 V rated value  | 35 A  |
| — at 440 V rated value  | 2.9 A   |
| — at 600 V rated value  | 1.4 A   |
| <b>● at 1 current path at DC-3 at DC-5</b>                              |   |
| — at 24 V rated value   | 20 A  |
| — at 60 V rated value   | 5 A   |
| — at 110 V rated value  | 2.5 A   |
| — at 220 V rated value  | 1 A   |
| — at 440 V rated value  | 0.09 A  |
| — at 600 V rated value  | 0.06 A  |
| <b>● with 2 current paths in series at DC-3 at DC-5</b>                 |   |
| — at 24 V rated value   | 35 A  |
| — at 60 V rated value   | 35 A  |
| — at 110 V rated value  | 15 A  |
| — at 220 V rated value  | 3 A   |
| — at 440 V rated value  | 0.27 A  |
| — at 600 V rated value  | 0.16 A  |
| <b>● with 3 current paths in series at DC-3 at DC-5</b>                 |   |
| — at 24 V rated value   | 35 A  |
| — at 60 V rated value   | 35 A  |
| — at 110 V rated value  | 35 A  |
| — at 220 V rated value  | 10 A  |
| — at 440 V rated value  | 0.6 A   |
| — at 600 V rated value  | 0.6 A   |
| <b>operating power</b>  |   |
| ● at AC-2 at 400 V rated value  | 4 kW  |
| ● at AC-3   |   |
| — at 230 V rated value  | 2.2 kW  |
| — at 400 V rated value  | 4 kW  |
| — at 500 V rated value  | 4 kW  |
| — at 690 V rated value  | 7.5 kW  |
| ● at AC-3e  |   |
| — at 230 V rated value  | 2.2 kW  |
| — at 400 V rated value  | 4 kW  |
| — at 500 V rated value  | 4 kW  |
| — at 690 V rated value  | 7.5 kW  |
| <b>operating power for approx. 200000 operating cycles at AC-4</b>      |   |
| ● at 400 V rated value  | 2 kW  |
| ● at 690 V rated value  | 2.5 kW  |
| <b>operating apparent power at AC-6a</b>                                |   |
| ● up to 230 V for current peak value n=20 rated value                   | 4.5 kVA   |
| ● up to 400 V for current peak value n=20 rated value                   | 7.8 kVA   |
| ● up to 500 V for current peak value n=20 rated value                   | 7.8 kVA   |
| ● up to 690 V for current peak value n=20 rated value                   | 10.7 kVA  |
| <b>operating apparent power at AC-6a</b>                                |   |
| ● up to 230 V for current peak value n=30 rated value                   | 3 kVA   |
| ● up to 400 V for current peak value n=30 rated value                   | 5.2 kVA   |
| ● up to 500 V for current peak value n=30 rated value                   | 5.2 kVA   |
| ● up to 690 V for current peak value n=30 rated value                   | 7.2 kVA   |
| <b>short-time withstand current in cold operating state up to 40 °C</b> |   |
| ● limited to 1 s switching at zero current maximum                      | 170 A; Use minimum cross-section acc. to AC-1 rated value |
| ● limited to 5 s switching at zero current maximum                      | 170 A; Use minimum cross-section acc. to AC-1 rated value |
| ● limited to 10 s switching at zero current maximum                     | 140 A; Use minimum cross-section acc. to AC-1 rated value |
| ● limited to 30 s switching at zero current maximum                     | 104 A; Use minimum cross-section acc. to AC-1 rated value |
| ● limited to 60 s switching at zero current maximum                     | 88 A; Use minimum cross-section acc. to AC-1 rated value  |

|   |   |
|---|---|
| <b>no-load switching frequency</b>  |   |
| • at DC   | 1 500 1/h                                       |
| <b>operating frequency</b>  |   |
| • at AC-1 maximum   | 1 000 1/h                                       |
| • at AC-2 maximum   | 1 000 1/h                                       |
| • at AC-3 maximum   | 1 000 1/h                                       |
| • at AC-3e  |   |
| — maximum   | 1 000 1/h                                       |
| • at AC-4 maximum   | 300 1/h   |
| <b>Control circuit/ Control</b>   |   |
| <b>type of voltage of the control supply voltage</b>                                  | DC  |
| <b>control supply voltage at DC rated value</b>                                       | 220 V   |
| <b>operating range factor control supply voltage rated value of magnet coil at DC</b> |   |
| • initial value   | 0.8   |
| • full-scale value  | 1.1   |
| <b>closing power of magnet coil at DC</b>   | 5.9 W   |
| <b>holding power of magnet coil at DC</b>   | 5.9 W   |
| <b>closing delay</b>  |   |
| • at DC   | 50 ... 170 ms                                   |
| <b>opening delay</b>  |   |
| • at DC   | 15 ... 18 ms                                    |
| <b>arcing time</b>  | 10 ms   |
| <b>control version of the switch operating mechanism</b>                              | Standard A1 - A2                                |
| <b>Auxiliary circuit</b>  |   |
| number of NC contacts for auxiliary contacts instantaneous contact                    | 1   |
| number of NO contacts for auxiliary contacts instantaneous contact                    | 1   |
| operational current at AC-12 maximum  | 10 A  |
| <b>operational current at AC-15</b>   |   |
| • at 230 V rated value  | 10 A  |
| • at 400 V rated value  | 3 A   |
| • at 500 V rated value  | 2 A   |
| • at 690 V rated value  | 1 A   |
| <b>operational current at DC-12</b>   |   |
| • at 24 V rated value   | 10 A  |
| • at 48 V rated value   | 6 A   |
| • at 60 V rated value   | 6 A   |
| • at 110 V rated value  | 3 A   |
| • at 125 V rated value  | 2 A   |
| • at 220 V rated value  | 1 A   |
| • at 600 V rated value  | 0.15 A  |
| <b>operational current at DC-13</b>   |   |
| • at 24 V rated value   | 10 A  |
| • at 48 V rated value   | 2 A   |
| • at 60 V rated value   | 2 A   |
| • at 110 V rated value  | 1 A   |
| • at 125 V rated value  | 0.9 A   |
| • at 220 V rated value  | 0.3 A   |
| • at 600 V rated value  | 0.1 A   |
| <b>contact reliability of auxiliary contacts</b>                                      | 1 faulty switching per 100 million (17 V, 1 mA) |
| <b>UL/CSA ratings</b>   |   |
| <b>full-load current (FLA) for 3-phase AC motor</b>                                   |   |
| • at 480 V rated value  | 7.6 A   |
| • at 600 V rated value  | 9 A   |
| <b>yielded mechanical performance [hp]</b>  |   |
| • for single-phase AC motor   |   |
| — at 110/120 V rated value  | 1 hp  |
| — at 230 V rated value  | 1 hp  |

|   |   |
|---|---|
| <ul style="list-style-type: none"> <li>• for 3-phase AC motor <ul style="list-style-type: none"> <li>— at 200/208 V rated value</li> <li>— at 220/230 V rated value</li> <li>— at 460/480 V rated value</li> <li>— at 575/600 V rated value</li> </ul> </li> </ul>  | <p>2 hp</p> <p>3 hp</p> <p>5 hp</p> <p>7.5 hp</p>   |
| <b>contact rating of auxiliary contacts according to UL</b>   | A600 / P600   |
| <b>UL File Number (CCN)</b>   | E31519 (NLDX, NLDX7)  |
| <b>Short-circuit protection</b>   |   |
| design of the miniature circuit breaker for short-circuit protection of the auxiliary circuit up to 230 V   | C characteristic: 10 A; 0.4 kA  |
| <b>design of the fuse link</b> <ul style="list-style-type: none"> <li>• for short-circuit protection of the main circuit <ul style="list-style-type: none"> <li>— with type of coordination 1 required</li> <li>— with type of coordination 2 required</li> </ul> </li> <li>• for short-circuit protection of the auxiliary switch required</li> </ul>  | <p>gG: 63 A (690 V, 100 kA), aM: 32 A (690 V, 100 kA), BS88: 63 A (415 V, 80 kA)</p> <p>gG: 25 A (690 V, 100 kA), aM: 20 A (690 V, 100 kA), BS88: 25 A (415 V, 80 kA)</p> <p>gG: 10 A (500 V, 1 kA)</p> |
| <b>Installation/ mounting/ dimensions</b>   |   |
| <b>mounting position</b>  | +/-180° rotation possible on vertical mounting surface; can be tilted forward and backward by +/- 22.5° on vertical mounting surface  |
| fastening method side-by-side mounting  | Yes   |
| <b>fastening method</b>   | screw and snap-on mounting onto 35 mm DIN rail according to DIN EN 60715  |
| <b>height</b>   | 102 mm  |
| <b>width</b>  | 45 mm   |
| <b>depth</b>  | 107 mm  |
| <b>required spacing</b> <ul style="list-style-type: none"> <li>• with side-by-side mounting <ul style="list-style-type: none"> <li>— forwards</li> <li>— upwards</li> <li>— downwards</li> <li>— at the side</li> </ul> </li> <li>• for grounded parts <ul style="list-style-type: none"> <li>— forwards</li> <li>— upwards</li> <li>— at the side</li> <li>— downwards</li> </ul> </li> <li>• for live parts <ul style="list-style-type: none"> <li>— forwards</li> <li>— upwards</li> <li>— downwards</li> <li>— at the side</li> </ul> </li> </ul> | <p>10 mm</p> <p>10 mm</p> <p>10 mm</p> <p>0 mm</p> <p>10 mm</p> <p>10 mm</p> <p>6 mm</p> <p>10 mm</p> <p>10 mm</p> <p>10 mm</p> <p>6 mm</p>   |
| <b>Connections/ Terminals</b>   |   |
| <b>type of electrical connection</b> <ul style="list-style-type: none"> <li>• for main current circuit</li> <li>• for auxiliary and control circuit</li> <li>• at contactor for auxiliary contacts</li> <li>• of magnet coil</li> </ul>   | <p>spring-loaded terminals</p> <p>spring-loaded terminals</p> <p>Spring-type terminals</p> <p>Spring-type terminals</p>   |
| <b>type of connectable conductor cross-sections</b> <ul style="list-style-type: none"> <li>• for main contacts <ul style="list-style-type: none"> <li>— solid</li> <li>— solid or stranded</li> <li>— finely stranded with core end processing</li> <li>— finely stranded without core end processing</li> </ul> </li> <li>• for AWG cables for main contacts</li> </ul>  | <p>2x (1 ... 10 mm<sup>2</sup>)</p> <p>2x (1 ... 10 mm<sup>2</sup>)</p> <p>2x (1 ... 6 mm<sup>2</sup>)</p> <p>2x (1 ... 6 mm<sup>2</sup>)</p> <p>2x (18 ... 8)</p>                                      |
| <b>connectable conductor cross-section for main contacts</b> <ul style="list-style-type: none"> <li>• solid</li> <li>• stranded</li> <li>• finely stranded with core end processing</li> <li>• finely stranded without core end processing</li> </ul>   | <p>1 ... 10 mm<sup>2</sup></p> <p>1 ... 10 mm<sup>2</sup></p> <p>1 ... 6 mm<sup>2</sup></p> <p>1 ... 6 mm<sup>2</sup></p>   |
| <b>connectable conductor cross-section for auxiliary contacts</b> <ul style="list-style-type: none"> <li>• solid or stranded</li> </ul>   | 0.5 ... 2.5 mm <sup>2</sup>   |

|   |  |
|---|--|
| <ul style="list-style-type: none"> <li>finely stranded with core end processing</li> <li>finely stranded without core end processing</li> </ul>   | <p>0.5 ... 1.5 mm<sup>2</sup></p> <p>0.5 ... 2.5 mm<sup>2</sup></p>  |
| <b>type of connectable conductor cross-sections</b> <ul style="list-style-type: none"> <li>for auxiliary contacts <ul style="list-style-type: none"> <li>— solid or stranded</li> <li>— finely stranded with core end processing</li> <li>— finely stranded without core end processing</li> </ul> </li> <li>for AWG cables for auxiliary contacts</li> </ul> | <p>2x (0.5 ... 2.5 mm<sup>2</sup>)</p> <p>2x (0.5 ... 1.5 mm<sup>2</sup>)</p> <p>2x (0.5 ... 2.5 mm<sup>2</sup>)</p> <p>2x (20 ... 14)</p> |
| <b>AWG number as coded connectable conductor cross section for main contacts</b>  | 18 ... 8   |
| <b>AWG number as coded connectable conductor cross section for auxiliary contacts</b>   | 20 ... 14  |

**Safety related data**

|   |                                 |
|---|---------------------------------|
| <b>product function</b> <ul style="list-style-type: none"> <li>mirror contact according to IEC 60947-4-1</li> <li>positively driven operation according to IEC 60947-5-1</li> <li>suitable for safety function</li> </ul> | <p>Yes</p> <p>No</p> <p>Yes</p> |
| suitability for use safety-related switching OFF  | Yes                             |
| <b>service life maximum</b>   | 20 a                            |
| <b>test wear-related service life necessary</b>   | Yes                             |
| <b>proportion of dangerous failures</b> <ul style="list-style-type: none"> <li>with low demand rate according to SN 31920</li> <li>with high demand rate according to SN 31920</li> </ul>                                 | <p>40 %</p> <p>73 %</p>         |
| <b>B10 value with high demand rate according to SN 31920</b>  | 1 000 000                       |
| <b>failure rate [FIT] with low demand rate according to SN 31920</b>  | 100 FIT                         |

|  |  |
|--|--|
| ISO 13849  |  |
| <b>device type according to ISO 13849-1</b>                    | 3  |
| <b>overdimensioning according to ISO 13849-2 necessary</b>     | Yes  |
| IEC 61508  |  |
| <b>safety device type according to IEC 61508-2</b>             | Type A   |
| Electrical Safety  |  |
| <b>protection class IP on the front according to IEC 60529</b> | IP20   |
| <b>touch protection on the front according to IEC 60529</b>    | finger-safe, for vertical contact from the front |

**Approvals Certificates**

|  |   |
|--|---|
| Environmental Product Declaration  |   |
| <ul style="list-style-type: none"> <li>global warming potential [CO2 eq] / during manufacturing</li> <li>global warming potential [CO2 eq] / during operation</li> <li>global warming potential [CO2 eq] / after end of life</li> <li>global warming potential [CO2 eq] / total</li> </ul> | <p>2.65 kg</p> <p>219 kg</p> <p>-0.639 kg</p> <p>221 kg</p> |

**Environment**      **General Product Approval**

[Environmental Confirmations](#)



**General Product Approval**      **EMV**      **Test Certificates**



[Special Test Certificate](#)

**Test Certificates**      **Maritime application**

[Type Test Certificates/Test Report](#)



Maritime application    other    Railway



[Miscellaneous](#)

[Confirmation](#)



[Miscellaneous](#)

[Special Test Certificate](#)

Dangerous goods

[Transport Information](#)

Further information

Information on the packaging

<https://support.industry.siemens.com/cs/ww/en/view/109813875>

Information for data generation and storage

<https://support.industry.siemens.com/cs/ww/en/view/109995012>

Information- and Downloadcenter (Catalogs, Brochures,...)

<https://www.siemens.com/ic10>

Industry Mall (Online ordering system)

<https://mall.industry.siemens.com/mall/en/en/Catalog/product?mlfb=3RT2023-2BM40>

Service&Support (Manuals, Certificates, Characteristics, FAQs,...)

<https://support.industry.siemens.com/cs/ww/en/ps/3RT2023-2BM40>

Image database (product images, 2D dimension drawings, 3D models, device circuit diagrams, EPLAN macros, ...)

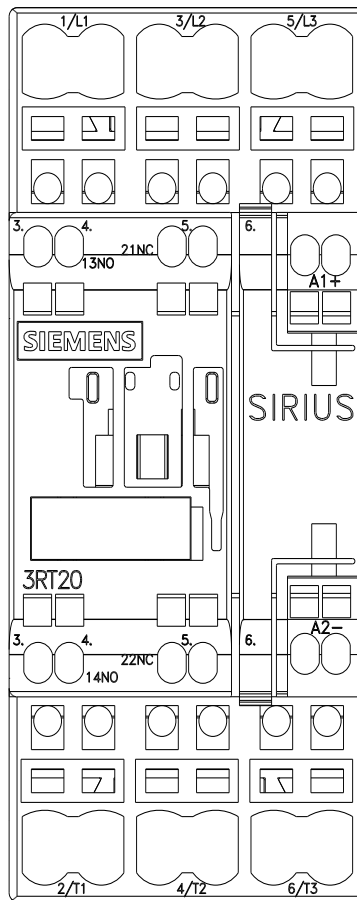
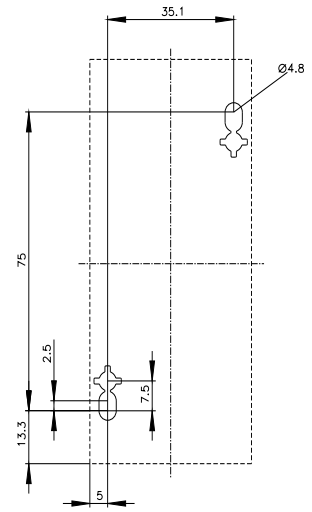
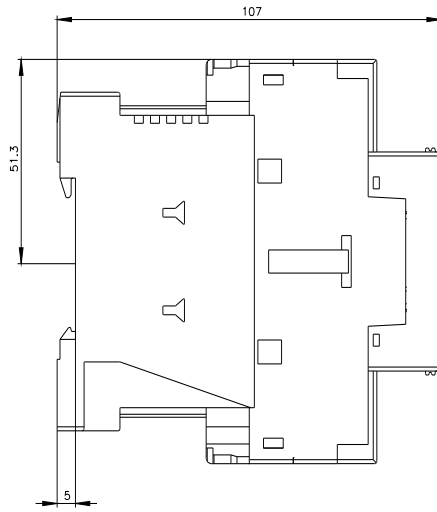
[https://www.automation.siemens.com/bilddb/cax\\_de.aspx?mlfb=3RT2023-2BM40&lang=en](https://www.automation.siemens.com/bilddb/cax_de.aspx?mlfb=3RT2023-2BM40&lang=en)

Cax online generator

<https://support.automation.siemens.com/WW/CAXorder/default.aspx?lang=en&mlfb=3RT2023-2BM40>

Characteristic curves

[https://curves.simaris.siemens.com/curves/<mmp\\_prod\\_noCOMP="HAUPT"></mmp\\_prod\\_no>](https://curves.simaris.siemens.com/curves/<mmp_prod_noCOMP=)





last modified:

4/4/2026