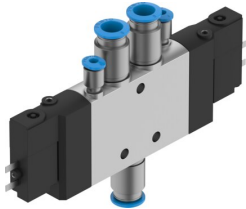


Air solenoid valve CPE14-M1BH-5JS-QS-8

Part number: 196910

FESTO



 [General operating condition](#)

Data sheet

Feature	Value
Valve function	5/2-way, bistable
Actuation type	Electrical
Width	14 mm
Normal nominal flow rate (normalized to DIN 1343)	680 l/min
Pneumatic working port	QS-8
Operating voltage	24V DC
Operating pressure	-0.09 MPa ... 1 MPa
Operating pressure	-0.9 bar ... 10 bar
Structural design	Piston gate valve
Certification	c UL us - recognized (OL)
Maritime classification	See certificate
Certificate issuing authority	DNV-TAA000032X UL MH19482
Degree of protection	IP65 With plug socket As per IEC 60529
Nominal width	6 mm
Exhaust air function	Adjustable
Sealing principle	Soft
Mounting position	Any
Manual override	Detenting via accessory Non-detenting
Type of control	Piloted
Pilot air supply port	External
Flow direction	Reversible
Symbol	00991016
Valve position ID	Label holder
Lap	Positive overlap
Pilot pressure MPa	0.2 MPa ... 0.8 MPa
Pilot pressure	2 bar ... 8 bar
Changeover time	13 ms
Duty cycle	100% in combination with holding current reduction
Max. positive test pulse with 0 signal	1200 µs
Max. negative test pulse on 1 signal	900 µs
Coil characteristics	24 V DC: 1.28 W
Permissible voltage fluctuations	-15% / +10%
Operating medium	Compressed air as per ISO 8573-1:2010 [7:4:4]

Feature	Value
Information on operating and pilot media	Operation with oil lubrication possible (required for further use)
Vibration resistance	Transport application test with severity level 2 as per FN 942017-4 and EN 60068-2-6
Shock resistance	Shock test with severity level 2 as per FN 942017-5 and EN 60068-2-27
Corrosion resistance class (CRC)	2 - Moderate corrosion stress
LABS (PWIS) conformity	VDMA24364-B1/B2-L
Temperature of medium	-5 °C ... 50 °C
Pilot medium	Compressed air as per ISO 8573-1:2010 [7:4:4]
Ambient temperature	-5 °C ... 50 °C
Electrical connection	2-pin
Type of mounting	With through-hole
Pilot exhaust air port 82	M3
Pilot exhaust air port 84	M3
Pilot air port 12	M3
Pilot air port 14	M3
Pneumatic connection 1	QS-8
Pneumatic connection 2	QS-8
Pneumatic connection 3	G1/8
Pneumatic connection 4	QS-8
Pneumatic connection 5	G1/8
Note on materials	RoHS compliant
Seals material	NBR
Housing material	Die-cast aluminum