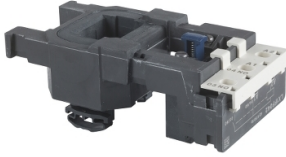


Product datasheet

Specifications

TeSys F - contactor coil - LX1FF - 1000 V AC 50 Hz



LX1FF1000

! Discontinued

Main

Range	TeSys
Product or component type	Contactor coil
Device short name	LX1FF
Range compatibility	TeSys TeSys F LC1F contactor
Product compatibility	LC1F115 LC1F150
Control circuit type	AC at 50 Hz
[Uc] control circuit voltage	1000 V AC 50 Hz
Inductance of closed circuit	68.5 H
Average resistance	610 Ohm at 20 °C
Operating time	23...35 ms closing 5...15 ms opening
Mechanical durability	10 Mcycles
Maximum operating rate	2400 cyc/h 55 °C

Complementary

Coil technology	Without built-in suppressor module
Control circuit voltage limits	Drop-out: 0.35...0.55 Uc 50/60 Hz (at 55 °C) Operational: 0.85...1.1 Uc 50/60 Hz (at 55 °C)
Inrush power in VA	550 VA 50 Hz cos phi 0.3 (at 20 °C)
Hold-in power consumption in VA	45 VA 50 Hz cos phi 0.3 (at 20 °C)
Heat dissipation	12...16 W at 50 Hz

Environment

Ambient air temperature for operation	-5...55 °C
Net weight	0.43 kg

Packing Units

Unit Type of Package 1	PCE
Number of Units in Package 1	1

Contractual warranty

Warranty (in months)	18
----------------------	----



Environmental Data

Schneider Electric aims to achieve Net Zero status by 2050 through supply chain partnerships, lower impact materials, and circularity via our ongoing “Use Better, Use Longer, Use Again” campaign to extend product lifetimes and recyclability.

[Environmental Data explained >](#)

[How we assess product sustainability >](#)

Use Better



Materials and Substances

Packaging made with recycled cardboard **Yes**

Packaging without single use plastic **Yes**

Use Longer



Lifetime extension

Repair **No**

Use Again



Repack and remanufacture

WEEE Label



The product must be disposed on European Union markets following specific waste collection and never end up in rubbish bins