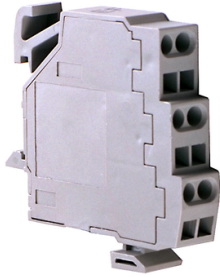


# Product data sheet

Specifications

SQUARE D



## MasterPacT NT/NW CRADLE POSITION SWITCH

S48930

Product availability: Stock - Normally stocked in distribution facility

### Main

Range of Product	MasterPact NT MasterPact NW
Product or Component Type	Cradle base
Device short name	carriage position switch

### Complementary

Mounting Mode	Ring tongue
Accessory / Separate Part Type	Connection terminal block
Auxiliary contacts type	Type B

### Ordering and shipping details

Category	US1DE2F01290
Discount Schedule	DE2F
GTIN	3606486280713
Returnability	No
Country of origin	US

### Packing Units

Unit Type of Package 1	PCE
Nbr. of units in pkg.	1
Package 1 Height	3.9 in (10.0 cm)
Package 1 Width	3.9 in (10.0 cm)
Package 1 Length	3.9 in (10.0 cm)
Package weight(Lbs)	16.01 oz (454 g)

### Contractual warranty

Warranty (in months)	18
----------------------	----

Price is "List Price" and may be subject to a trade discount – check with your local distributor or retailer for actual price.



## Environmental Data

Schneider Electric aims to achieve Net Zero status by 2050 through supply chain partnerships, lower impact materials, and circularity via our ongoing “Use Better, Use Longer, Use Again” campaign to extend product lifetimes and recyclability.

[Environmental Data explained >](#)

[How we assess product sustainability >](#)

### Use Better



#### Materials and Substances

Packaging made with recycled cardboard	No
Packaging without single use plastic	No
EU RoHS Directive	Under investigation
California proposition 65	WARNING: Cancer and Reproductive Harm - <a href="http://www.P65Warnings.ca.gov">www.P65Warnings.ca.gov</a>

### Use Longer



#### Lifetime extension

Repair	No
--------	----

### Use Again



#### Repack and remanufacture

Take-back	No
-----------	----