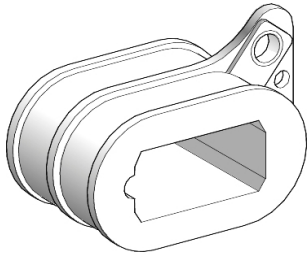


# Product datasheet

Specifications



## Coil WB1-G 440V,500V AC 50/60Hz for CV1B, CV3B Contactor

WB1GA440

⚠ Discontinued on: 12 May 2023

⚠ Discontinued

### Main

Range	TeSys
Product or component type	Contactor coil
Range compatibility	TeSys TeSys B CV1BF contactor TeSys TeSys B CV3BF contactor TeSys TeSys B CV1BG contactor TeSys TeSys B CV3BG contactor TeSys TeSys B CV3BJ contactor
Control circuit type	AC
Coil type	Low consumption
[Uc] control circuit voltage	440 V AC 50 Hz 500 V AC 60 Hz

### Complementary

Control circuit voltage limits	Operational: 0.85...1.1 Uc at 50 Hz (at <55 °C) Operational: 0.85...1.1 Uc at 60 Hz (at <55 °C)
Average resistance	123.32 Ohm at 20 °C
Inductance of closed circuit	8.9 H
Inrush power in VA	345...415 VA 50 Hz cos phi 0.38 (at 20 °C) 370...475 VA 60 Hz cos phi 0.35 (at 20 °C)
Inrush power in W	130...160 W at 20 °C 130...165 W at 20 °C
Hold-in power consumption in VA	45...65 VA 50 Hz cos phi 0.35 (at 20 °C) 50...75 VA 60 Hz cos phi 0.37 (at 20 °C)
Hold-in power consumption in W	16...25 W at 20 °C 19...30 W at 20 °C
Net weight	0.22 kg

### Packing Units

Unit Type of Package 1	PCE
Number of Units in Package 1	1
Package 1 Height	3.7 cm
Package 1 Width	5.5 cm
Package 1 Length	7.9 cm
Package 1 Weight	0.17 kg

### Contractual warranty





## Environmental Data

Schneider Electric aims to achieve Net Zero status by 2050 through supply chain partnerships, lower impact materials, and circularity via our ongoing “Use Better, Use Longer, Use Again” campaign to extend product lifetimes and recyclability.

[Environmental Data explained >](#)

[How we assess product sustainability >](#)

### Use Longer



#### Lifetime extension

Repair

No

### Use Again



#### Repack and remanufacture

WEEE Label



The product must be disposed on European Union markets following specific waste collection and never end up in rubbish bins