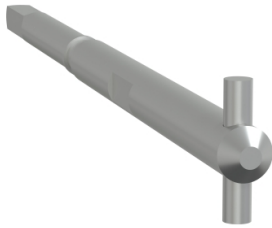


Product datasheet

Specifications



Open execution shaft for operating handle, GoPact MTS 200, shaft length 113mm

GMSOTHOES02

Main

| | |
|---------------------------|---------------------------------|
| Range of product | GoPact MTS |
| Product or component type | Shaft |
| Device application | Control switch |
| Range compatibility | GoPact MTS 200 |
| Product compatibility | switch disconnecter 125...200 A |
| Frame size | 2 |
| Control type | Rotary handle |
| Shaft length | 113 mm |

Packing Units

| | |
|------------------------------|----------|
| Unit Type of Package 1 | PCE |
| Number of Units in Package 1 | 1 |
| Package 1 Height | 1.7 cm |
| Package 1 Width | 5.5 cm |
| Package 1 Length | 23.5 cm |
| Package 1 Weight | 0.147 kg |

Contractual warranty

| | |
|----------------------|----|
| Warranty (in months) | 18 |
|----------------------|----|

Disclaimer: This documentation is not intended as a substitute for and is not to be used for determining suitability or reliability of these products for specific user applications



Environmental Data

Schneider Electric aims to achieve Net Zero status by 2050 through supply chain partnerships, lower impact materials, and circularity via our ongoing “Use Better, Use Longer, Use Again” campaign to extend product lifetimes and recyclability.

[Environmental Data explained >](#)

[How we assess product sustainability >](#)

Use Better

Materials and Packaging

| | |
|--|------------------------------------|
| Packaging made with recycled cardboard | Yes |
| Packaging without single use plastic | No |
| Halogen-free status | Halogen free plastic parts product |
| PVC free | Yes |
| Silicone-free | Yes |

Use Longer

Lifetime extension

| | |
|--------|----|
| Repair | No |
|--------|----|

Use Again

Repack and remanufacture

| | |
|-----------|----|
| Take-back | No |
|-----------|----|

Technical Illustration

Assembly's dimensions

