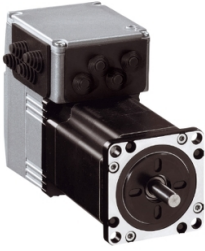


# Product datasheet

Specifications



## LEXIUM INTEGRATED DRIVE, BLDC MOTOR, CAN

ILE1F661S1878

⚠ Discontinued on: 23 Jan 2021

⚠ Discontinued

### Packing Units

|                              |          |
|------------------------------|----------|
| Unit Type of Package 1       | PCE      |
| Number of Units in Package 1 | 1        |
| Package 1 Height             | 11 cm    |
| Package 1 Width              | 19 cm    |
| Package 1 Length             | 39.5 cm  |
| Package 1 Weight             | 2.315 kg |

### Contractual warranty

|                      |    |
|----------------------|----|
| Warranty (in months) | 18 |
|----------------------|----|

Disclaimer: This documentation is not intended as a substitute for and is not to be used for determining suitability or reliability of these products for specific user applications



## Environmental Data

Schneider Electric aims to achieve Net Zero status by 2050 through supply chain partnerships, lower impact materials, and circularity via our ongoing “Use Better, Use Longer, Use Again” campaign to extend product lifetimes and recyclability.

[Environmental Data explained >](#)

[How we assess product sustainability >](#)



### Environmental footprint

[Environmental Disclosure](#)

[Product Environmental Profile](#)

## Use Better



### Materials and Substances

SCIP Number

C2ce416c-ac1e-4e66-863f-bde9b6d94d11

EU RoHS Directive

[Compliant By Exemption](#)

PVC free

Yes

## Use Longer



### Lifetime extension

Repair

No

## Use Again



### Repack and remanufacture

End of life manual availability

[End of Life Information](#)