



reversing contactor assembly, AC-3e/AC-3, 95 A, 45 kW / 400 V, 3-pole, 20-33 V AC/DC, 50/60 Hz, screw terminal, electrical and mechanical interlock, auxiliary contacts: 2 x 1 NO

product brand name	SIRIUS
product designation	Reversing contactor assembly
product type designation	3RA23
manufacturer's article number	
<ul style="list-style-type: none"> • 1 of the supplied contactor • 2 of the supplied contactor • of the supplied RS assembly kit 	3RT2046-1NB30 3RT2046-1NB30 3RA2943-2AA1
General technical data	
size of contactor	S3
product extension auxiliary switch	Yes
shock resistance at rectangular impulse	
<ul style="list-style-type: none"> • at AC • at DC 	6.7 g / 5 ms, 4.0 g / 10 ms 6.7 g / 5 ms, 4 g / 10 ms
shock resistance with sine pulse	
<ul style="list-style-type: none"> • at AC • at DC 	10.6 g / 5 ms, 6.3 g / 10 ms 10.6 g / 5 ms, 6.3 g / 10 ms
mechanical service life (operating cycles)	
<ul style="list-style-type: none"> • of contactor typical • of the contactor with added auxiliary switch block typical 	10 000 000 10 000 000
reference code according to IEC 81346-2	Q
Substance Prohibitance (day/month/year)	03/01/2017
SVHC substance name	Lead CAS-No. 7439-92-1 Lead monoxide (lead oxide) CAS-No. 1317-36-8 2-methyl-1-(4-methylthiophenyl)-2-morpholinopropan-1-one CAS-No. 71868-10-5 Melamine CAS-No. 108-78-1
Net Weight	4.293 kg
Ambient conditions	
installation altitude at height above sea level maximum	2 000 m
ambient temperature	
<ul style="list-style-type: none"> • during operation • during storage 	-25 ... +60 °C -55 ... +80 °C
Main circuit	
number of poles for main current circuit	3
number of NO contacts for main contacts	3
number of NC contacts for main contacts	0
operating voltage	
<ul style="list-style-type: none"> • at AC-3 rated value maximum • at AC-3e rated value maximum 	1 000 V 1 000 V
operational current	

<ul style="list-style-type: none"> ● at AC-3 <ul style="list-style-type: none"> — at 400 V rated value — at 500 V rated value — at 690 V rated value ● at AC-3e <ul style="list-style-type: none"> — at 400 V rated value — at 500 V rated value — at 690 V rated value 	<p>95 A</p> <p>95 A</p> <p>78 A</p> <p>95 A</p> <p>95 A</p> <p>78 A</p>
operating power	
<ul style="list-style-type: none"> ● at AC-3 <ul style="list-style-type: none"> — at 400 V rated value — at 500 V rated value — at 690 V rated value ● at AC-3e <ul style="list-style-type: none"> — at 400 V rated value — at 690 V rated value ● at AC-4 at 400 V rated value 	<p>45 kW</p> <p>55 kW</p> <p>75 kW</p> <p>45 kW</p> <p>75 kW</p> <p>45 kW</p>
operating frequency	
<ul style="list-style-type: none"> ● at AC-3 maximum ● at AC-3e maximum 	<p>850 1/h</p> <p>850 1/h</p>
Control circuit/ Control	
type of voltage of the control supply voltage	AC/DC
control supply voltage 1 at AC	
<ul style="list-style-type: none"> ● at 50 Hz ● at 60 Hz 	<p>20 ... 33 V</p> <p>20 ... 33 V</p>
control supply voltage 1 at DC	20 ... 33 V
operating range factor control supply voltage rated value of magnet coil at AC	
<ul style="list-style-type: none"> ● at 50 Hz ● at 60 Hz 	<p>0.8 ... 1.1</p> <p>0.8 ... 1.1</p>
design of the surge suppressor	with varistor
apparent pick-up power of magnet coil at AC	
<ul style="list-style-type: none"> ● at 50 Hz ● at 60 Hz 	<p>163 VA</p> <p>163 VA</p>
apparent holding power of magnet coil at AC	
<ul style="list-style-type: none"> ● at 50 Hz ● at 60 Hz 	<p>3.1 VA</p> <p>3.1 VA</p>
closing power of magnet coil at DC	76 W
holding power of magnet coil at DC	1.8 W
Auxiliary circuit	
number of NC contacts for auxiliary contacts	
<ul style="list-style-type: none"> ● per direction of rotation 	0
number of NO contacts for auxiliary contacts	
<ul style="list-style-type: none"> ● per direction of rotation ● instantaneous contact 	<p>1</p> <p>2</p>
UL/CSA ratings	
full-load current (FLA) for 3-phase AC motor	
<ul style="list-style-type: none"> ● at 480 V rated value ● at 600 V rated value 	<p>96 A</p> <p>77 A</p>
yielded mechanical performance [hp] for 3-phase AC motor	
<ul style="list-style-type: none"> ● at 200/208 V rated value ● at 220/230 V rated value ● at 460/480 V rated value ● at 575/600 V rated value 	<p>30 hp</p> <p>30 hp</p> <p>75 hp</p> <p>75 hp</p>
contact rating of auxiliary contacts according to UL	A600 / Q600
Short-circuit protection	
design of the fuse link	
<ul style="list-style-type: none"> ● for short-circuit protection of the main circuit <ul style="list-style-type: none"> — with type of coordination 1 required 	gG NH 3NA, DIAZED 5SB, NEOZED 5SE: 355 A

— with type of coordination 2 required	gG NH 3NA, DIAZED 5SB, NEOZED 5SE: 160 A		
● for short-circuit protection of the auxiliary switch required	fuse gG: 10 A		
Installation/ mounting/ dimensions			
mounting position	+/-180° rotation possible on vertical mounting surface; can be tilted forward and backward by +/- 22.5° on vertical mounting surface		
fastening method	screw and snap-on mounting onto 35 mm DIN rail		
height	160 mm		
width	150 mm		
depth	152 mm		
required spacing			
● with side-by-side mounting			
— forwards	10 mm		
— backwards	0 mm		
— upwards	10 mm		
— downwards	10 mm		
— at the side	10 mm		
● for grounded parts			
— forwards	10 mm		
— backwards	0 mm		
— upwards	10 mm		
— at the side	10 mm		
— downwards	10 mm		
● for live parts			
— forwards	10 mm		
— backwards	0 mm		
— upwards	10 mm		
— downwards	10 mm		
— at the side	10 mm		
Connections/ Terminals			
type of electrical connection			
● for main current circuit	screw-type terminals		
● for auxiliary and control circuit	screw-type terminals		
● at contactor for auxiliary contacts	Screw-type terminals		
● of magnet coil	Screw-type terminals		
type of connectable conductor cross-sections for main contacts			
● solid or stranded	2x (2.5 ... 16 mm ²), 2x (10 ... 50 mm ²), 1x (10 ... 70 mm ²)		
● finely stranded with core end processing	2x (2.5 ... 35 mm ²), 1x (2.5 ... 50 mm ²)		
● finely stranded without core end processing	2x (10 ... 35 mm ²), 1x (10 ... 50 mm ²)		
type of connectable conductor cross-sections			
● for auxiliary contacts			
— solid or stranded	2x (0.5 ... 1.5 mm ²), 2x (0.75 ... 2.5 mm ²)		
— finely stranded with core end processing	2x (0.5 ... 1.5 mm ²), 2x (0.75 ... 2.5 mm ²)		
● for AWG cables for auxiliary contacts	2x (20 ... 16), 2x (18 ... 14)		
Safety related data			
product function suitable for safety function	Yes		
Electrical Safety			
protection class IP on the front according to IEC 60529	IP20		
touch protection on the front according to IEC 60529	finger-safe, for vertical contact from the front		
Communication/ Protocol			
product function bus communication	Yes		
protocol is supported AS-Interface protocol	No		
product function control circuit interface with IO link	No		
Approvals Certificates			
Environment	General Product Approval	Test Certificates	Maritime application

[Environmental Con-
firmations](#)



[Type Test Certific-
ates/Test Report](#)





[Confirmation](#)

other

[Confirmation](#)



Further information

Information on the packaging

<https://support.industry.siemens.com/cs/ww/en/view/109813875>

Information for data generation and storage

<https://support.industry.siemens.com/cs/ww/en/view/109995012>

Information- and Downloadcenter (Catalogs, Brochures,...)

<https://www.siemens.com/ic10>

Industry Mall (Online ordering system)

<https://mall.industry.siemens.com/mall/en/en/Catalog/product?mlfb=3RA2346-8XB30-1NB3>

Service&Support (Manuals, Certificates, Characteristics, FAQs,...)

<https://support.industry.siemens.com/cs/ww/en/ps/3RA2346-8XB30-1NB3>

Image database (product images, 2D dimension drawings, 3D models, device circuit diagrams, EPLAN macros, ...)

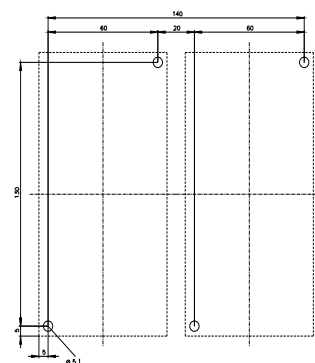
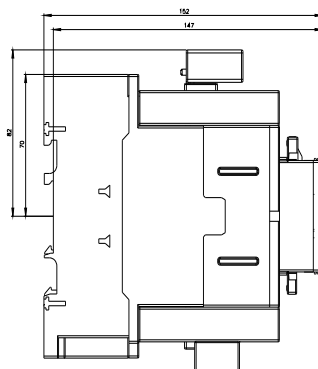
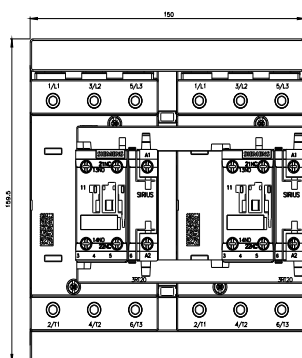
https://www.automation.siemens.com/bilddb/cax_de.aspx?mlfb=3RA2346-8XB30-1NB3&lang=en

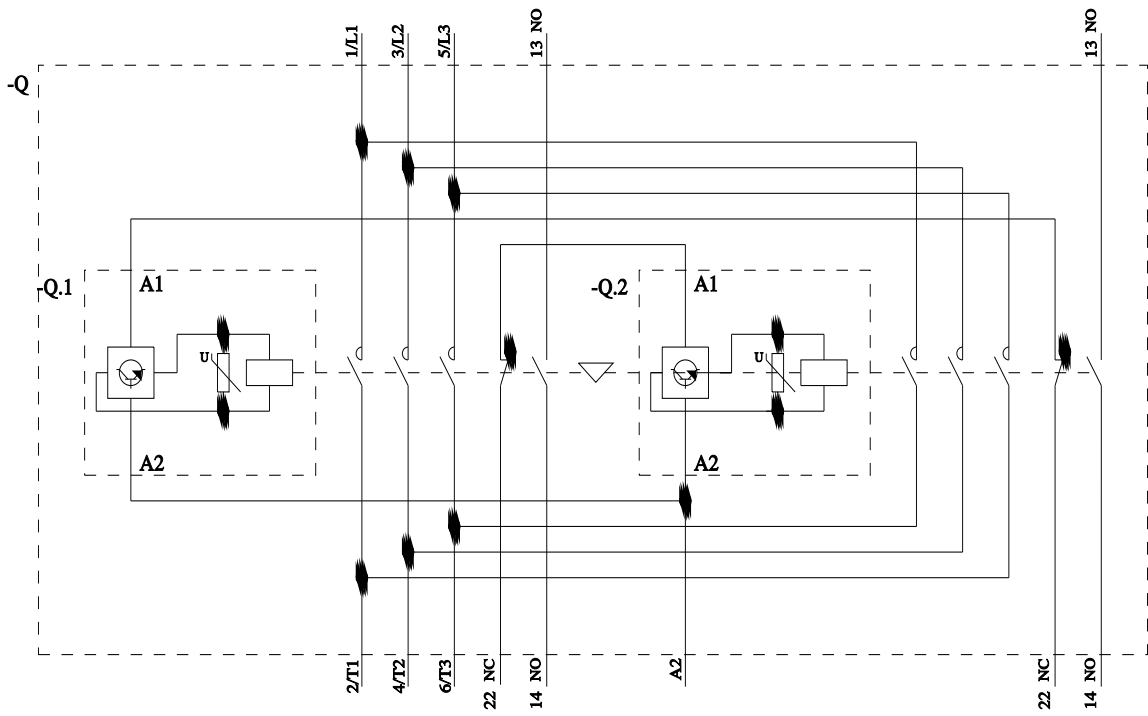
Cax online generator

<https://support.automation.siemens.com/WW/CAXorder/default.aspx?lang=en&mlfb=3RA2346-8XB30-1NB3>

Characteristic curves

[https://curves.simaris.siemens.com/curves/<mmp_prod_noCOMP="HAUPT"></mmp_prod_no>](https://curves.simaris.siemens.com/curves/<mmp_prod_noCOMP=)





last modified:

4/4/2026 