

# Product datasheet

Specifications



## TransferPacT Automatic, 400A, 400V, 3P, Rotary, frame 630A

TA63D3S4004TPE

### Main

Range of product	TransferPacT
Product or component type	Automatic transfer switch
Device application	Change source of supply
Poles description	3P
Network type	AC
Network frequency	50/60 Hz
Downside connection	Screwed
Mounting mode	Fixed
Upside connection	Screwed
Contact position indicator	Yes
[Icm] rated short-circuit making capacity	40 kA switch-disconnector alone 400 V AC at 50 Hz 330 kA with upstream protection circuit breaker 400 V AC at 50 Hz
Suitability for isolation	Yes

### Complementary

Transfer switch class	PC
Number of contact position	3
Signal contacts composition	1 NO + 2 NC 1 NC + 2 NO 2 NO
Utilization category	AC-33B
[Ue] rated operational voltage	400 V AC 50/60 Hz
Control type	Rotary knob Selector switch
Operating mode	Manual Automatic
Mounting support	Plate
Locking options description	Padlock in OFF position Padlock in SI / SII position
Rated duty	Uninterrupted
[Ui] rated insulation voltage	Switch: 800 V Controller: 500 V
[Uimp] rated impulse withstand voltage	Switch: 12 kV Controller: 6 kV
[Ie] rated operational current	400 A

Excluding VAT, FCA Jabal Ali & amp; are subject to change – check with your local distributor.

<b>Mechanical interlocking</b>	With mechanical interlocking
<b>Mechanical durability</b>	10000 cycles
<b>Connection pitch</b>	45 mm
<b>Local signalling</b>	LED indicator (green) for power ON LED indicator (red) for alarm
<b>[Icw] rated short-time withstand current</b>	20 kA during 0.5 s 25 kA during 0.1 s
<b>Height</b>	341 mm
<b>Width</b>	467 mm
<b>Depth</b>	185.8 mm
<b>Net weight</b>	20.8 kg
<b>[Ith] conventional free air thermal current</b>	400 A at 60 °C

## Environment

<b>Standards</b>	IEC 60947-6-1
<b>Product certifications</b>	CE CB CCC
<b>IP degree of protection</b>	Front face: IP40 auto mode Inside the enclosure: IP20 manual mode
<b>Ambient air temperature for operation</b>	-25...70 °C
<b>Ambient air temperature for storage</b>	-40...85 °C
<b>Pollution degree</b>	3

## Packing Units

<b>Unit Type of Package 1</b>	PCE
<b>Number of Units in Package 1</b>	1
<b>Package 1 Height</b>	73.000 cm
<b>Package 1 Width</b>	60.000 cm
<b>Package 1 Length</b>	80.000 cm
<b>Package 1 Weight</b>	35.900 kg

## Contractual warranty

<b>Warranty (in months)</b>	18
-----------------------------	----



## Environmental Data

Schneider Electric aims to achieve Net Zero status by 2050 through supply chain partnerships, lower impact materials, and circularity via our ongoing “Use Better, Use Longer, Use Again” campaign to extend product lifetimes and recyclability.

[Environmental Data explained >](#)

[How we assess product sustainability >](#)



### Environmental footprint

Total lifecycle Carbon footprint	2 177 kg CO2 eq.
Carbon footprint of the manufacturing phase [A1 to A3]	150 kg CO2 eq.
Carbon footprint of the distribution phase [A4]	7 kg CO2 eq.
Carbon footprint of the installation phase [A5]	0.2 kg CO2 eq.
Carbon footprint of the use phase [B2, B3, B4, B6]	1 971 kg CO2 eq.
Carbon footprint of the end-of-life phase [C1 to C4]	49 kg CO2 eq.
Environmental Disclosure	<a href="#">Product Environmental Profile</a>

### Use Better



### Materials and Substances

Packaging made with recycled cardboard	Yes
Packaging without single use plastic	No
SCIP Number	C3983c66-b0d8-4e89-97bd-6283c5c8cdd7
EU RoHS Directive	<a href="#">Compliant By Exemption</a>
REACH Regulation	<a href="#">Reference contains Substances of Very High Concern above the threshold</a>

### Use Longer




### Lifetime extension

Repair	No
--------	----

### Use Again

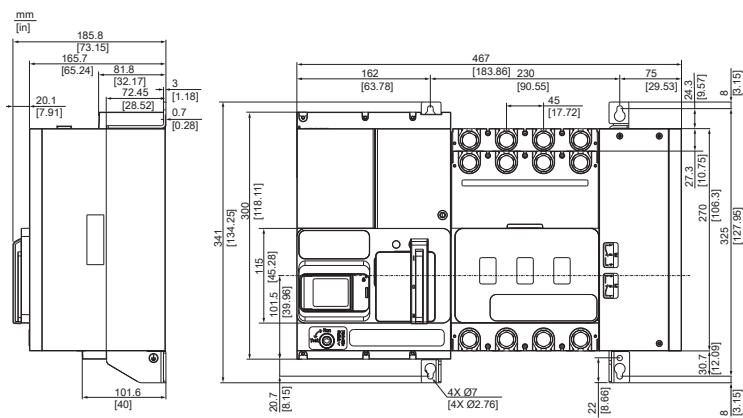


### Repack and remanufacture

Recyclability potential, in %	77
End of life manual availability	<a href="#">End of Life Information</a>
Take-back	No
WEEE Label	 The product must be disposed on European Union markets following specific waste collection and never end up in rubbish bins

Technical Illustration

Dimensions



Technical Illustration

Assembly exploded view

