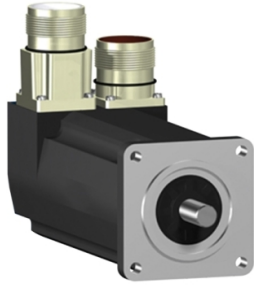


Product data sheet

Specifications



SH3 servomotor, 55mm, 3 stacks, keyed Shaft, SinCos Multiturn 128, no Brake, straight, IP54/65

SH30553P12A1000

⚠ Discontinued on: Jun 30, 2023

⚠ Discontinued

Main

Range compatibility	PacDrive 3
Device short name	SH3
Product or component type	Servo motor

Complementary

Maximum mechanical speed	9000 rpm
[Us] rated supply voltage	115...480 V
Network number of phases	Three phase
Continuous stall current	1.7 A
Continuous stall torque	9.29 lbf.in (1.05 N.m) 115...480 V three phase
Continuous power	680 W
Peak stall torque	31.0 lbf.in (3.5 N.m) 115...480 V three phase
Nominal output power	240 W 115 V single phase 460 W 230 V single phase 880 W 400 V three phase 970 W 480 V three phase
Nominal torque	10.001 lbf.in (1.13 N.m) 115 V single phase 9.7 lbf.in (1.1 N.m) 230 V single phase 7.17 lbf.in (0.81 N.m) 400 V three phase 7.17 lbf.in (0.81 N.m) 480 V three phase
Nominal speed	2000 rpm 115 V single phase 4000 rpm 230 V single phase 8000 rpm 400 V three phase 8000 rpm 480 V three phase
Maximum current Irms	6.5 A
Shaft end	Parallel key
Shaft diameter	0.4 in (9 mm)
Shaft length	0.8 in (20 mm)
Key width	0.1 in (3 mm)
IP degree of protection	IP54 shaft bushing without shaft seal ring: conforming to IEC 60034-5 IP65 motor: conforming to IEC 60034-5 IP65 shaft bushing: conforming to IEC 60034-5
Encoder type	Absolute multiturn SinCos Hiperface
Speed feedback resolution	128 periods
Holding brake	Without
Mounting support	International standard flange

Motor flange size	2.2 in (55 mm)
Electrical connection	Straight connector
Torque constant	0.62 N.m/A 248 °F (120 °C)
Back emf constant	41 V/krpm 68 °F (20 °C)
Number of motor poles	3
Rotor inertia	0.134 kg.cm ²
Stator resistance	10.4 Ohm
Stator inductance	37.98 mH
Maximum radial force Fr	190 N 8000 rpm 390 N 1000 rpm 310 N 2000 rpm 270 N 3000 rpm 240 N 4000 rpm 230 N 5000 rpm 210 N 6000 rpm 200 N 7000 rpm
Maximum axial force Fa	40 N
Type of cooling	Natural convection
Length	6.9 in (176.5 mm)
Centring collar diameter	1.6 in (40 mm)
Centring collar depth	0.08 in (2 mm)
Number of mounting holes	4
Mounting holes diameter	0.2 in (5.5 mm)
Circle diameter of the mounting holes	2.5 in (63 mm)
Net weight	4.0 lb(US) (1.8 kg)
Sizing reference	SH30553P
Network number of phases	3
Temperature copper hot	266 °F (130 °C)
Electrical connection	straight connector

Packing Units

Unit Type of Package 1	PCE
Number of Units in Package 1	1
Package 1 Height	4.567 in (11.600 cm)
Package 1 Width	15.669 in (39.800 cm)
Package 1 Length	7.677 in (19.500 cm)
Package 1 Weight	3.960 lb(US) (1.796 kg)

Contractual warranty

Warranty (in months)	18
----------------------	----



Environmental Data

Schneider Electric aims to achieve Net Zero status by 2050 through supply chain partnerships, lower impact materials, and circularity via our ongoing “Use Better, Use Longer, Use Again” campaign to extend product lifetimes and recyclability.

[Environmental Data explained >](#)

[How we assess product sustainability >](#)

Use Better



Materials and Substances

EU RoHS Directive

[Compliant By Exemption](#)

PVC free

Yes

Use Longer



Lifetime extension

Repair

No

Use Again



Repack and remanufacture

Circularity Profile

No need of specific recycling operations