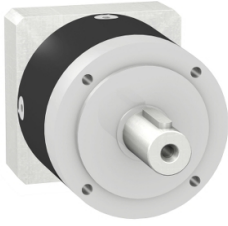


Product datasheet

Specifications



gearbox with straight teeth GBX- Ø 60 mm- reduction 4:1- < 16arcmin- 38 N.m

GBX0600040852G

! Discontinued

! Discontinued on: 18 Apr 2024

! To be end-of-service on: 18 Apr 2026

Main

Range compatibility	Lexium 05
Product or component type	Planetary gearbox
Gear box type	Straight teeth
Device short name	GBX
Gearbox external diameter	60 mm
Product compatibility	BRH0852
Reduction ratio	4:1

Complementary

Maximum torsional backlash	16 arc.min
Torsional rigidity	2.3 N.m/arcmin
Housing colour	Black
Housing material	Black anodized aluminium
Shaft material	C 45
Additional information	Lubricated for life
Service life in hours	30000 h at 100 rpm at 30 °C
Efficiency	96 %
Mounting position	Any position
Maximum radial force Fr	340 N at 100 rpm, force applied at mid-distance from output shaft during 30000 hour at 30 °C 500 N at 100 rpm, force applied at mid-distance from output shaft during 10000 hour at 30 °C
Maximum axial force Fa	450 N at 100 rpm, during 30000 hour at 30°C 600 N at 100 rpm, during 10000 hour at 30°C
moment of inertia	0.093 g.cm ²
Continuous output torque	38 N.m at 100 rpm at 30 °C
Maximum output torque	61 N.m at 100 rpm at 30 °C
Net weight	0.9 kg
Compatibility code	GBX

Environment

Noise level	58 dB at 1 m, no-load
-------------	-----------------------

IP degree of protection	Shaft output: IP54
-------------------------	--------------------

ambient temperature for operation	-25...90 °C
-----------------------------------	-------------

Packing Units

Unit Type of Package 1	PCE
------------------------	-----

Number of Units in Package 1	1
------------------------------	---

Contractual warranty

Warranty (in months)	18
----------------------	----



Environmental Data

Schneider Electric aims to achieve Net Zero status by 2050 through supply chain partnerships, lower impact materials, and circularity via our ongoing “Use Better, Use Longer, Use Again” campaign to extend product lifetimes and recyclability.

[Environmental Data explained >](#)

[How we assess product sustainability >](#)

Use Longer



Lifetime extension

Repair

No