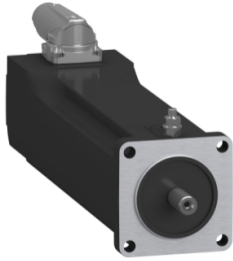


# Product datasheet

Specifications



SH3 servomotor, 55mm, 3 stacks,  
smooth Shaft, Singleturn DSL 18bit,  
Brake, OneMotorCable angular  
M17, IP65/65

SH30553P0AF4100

EAN Code: 3606481802460

## Main

Range compatibility	PacDrive 3
Device short name	SH3
Product or component type	Servo motor

## Complementary

Maximum mechanical speed	9000 rpm
[Us] rated supply voltage	115...480 V
Network number of phases	Three phase
Continuous stall current	1.7 A
Continuous stall torque	1.05 N.m at 115...480 V three phase
Continuous power	680 W
Peak stall torque	3.5 N.m at 115...480 V three phase
Nominal output power	390 W at 230 V single phase 680 W at 400 V three phase 680 W at 480 V three phase
Nominal torque	1.1 N.m at 230 V single phase 0.81 N.m at 400 V three phase 0.81 N.m at 480 V three phase
Nominal speed	4000 rpm at 230 V single phase 8000 rpm at 400 V three phase 9000 rpm at 480 V three phase
Maximum current Irms	6.5 A
Shaft end	Smooth shaft
Shaft diameter	9 mm
Shaft length	20 mm
IP degree of protection	IP65 motor: conforming to IEC 60034-5 IP65 shaft bushing: conforming to IEC 60034-5
Encoder type	Absolute single turn Hiperface DSL
Speed feedback resolution	262144 points/turn
Holding brake	With
Holding torque	0.8 N.m
Mounting support	International standard flange
Motor flange size	55 mm
Electrical connection	Straight connector

<b>Torque constant</b>	0.62 N.m/A at 120 °C
<b>Back emf constant</b>	41 V/krpm at 20 °C
<b>Number of motor poles</b>	3.0
<b>Rotor inertia</b>	0.155 kg.cm <sup>2</sup>
<b>Stator resistance</b>	10.4 Ohm
<b>Stator inductance</b>	13.02 mH
<b>Maximum radial force Fr</b>	710 N at 1000 rpm
<b>Maximum axial force Fa</b>	80 N
<b>Brake pull-in power</b>	10 W
<b>Type of cooling</b>	Natural convection
<b>Length</b>	203 mm
<b>Centring collar diameter</b>	40 mm
<b>Centring collar depth</b>	2 mm
<b>Number of mounting holes</b>	4
<b>Mounting holes diameter</b>	5.5 mm
<b>Circle diameter of the mounting holes</b>	63 mm
<b>Product weight</b>	1.95 kg
<b>Sizing reference</b>	SH30553P
<b>Network number of phases</b>	3
<b>Temperature copper hot</b>	130 °C
<b>Electrical connection</b>	quicklock rotatable right angled connector
<b>Output current 3s peak</b>	6.5 A
<b>Inertia</b>	0.021 kg.cm <sup>2</sup> of brake 0.134 kg.cm <sup>2</sup> of motor

## Packing Units

<b>Unit Type of Package 1</b>	PCE
<b>Number of Units in Package 1</b>	1
<b>Package 1 Height</b>	11.5 cm
<b>Package 1 Width</b>	19.0 cm
<b>Package 1 Length</b>	39.5 cm
<b>Package 1 Weight</b>	2.4 kg

## Contractual warranty

<b>Warranty (in months)</b>	18
-----------------------------	----



## Environmental Data

Schneider Electric aims to achieve Net Zero status by 2050 through supply chain partnerships, lower impact materials, and circularity via our ongoing “Use Better, Use Longer, Use Again” campaign to extend product lifetimes and recyclability.

[Environmental Data explained >](#)

[How we assess product sustainability >](#)



### Environmental footprint

Total lifecycle Carbon footprint	1 618 kg CO2 eq.
Carbon footprint of the manufacturing phase [A1 to A3]	11 kg CO2 eq.
Carbon footprint of the distribution phase [A4]	0.3 kg CO2 eq.
Carbon footprint of the installation phase [A5]	0 kg CO2 eq.
Carbon footprint of the use phase [B2, B3, B4, B6]	1 607 kg CO2 eq.
Carbon footprint of the end-of-life phase [C1 to C4]	0.2 kg CO2 eq.

## Use Better



### Materials and Substances

Packaging made with recycled cardboard	Yes
Packaging without single use plastic	No
SCIP Number	Ead0850d-370a-47c5-8cf7-1d93c2c974a4
EU RoHS Directive	<a href="#">Compliant By Exemption</a>
REACH Regulation	<a href="#">Reference contains Substances of Very High Concern above the threshold</a>
PVC free	Yes

## Use Longer



### Lifetime extension

Repair	No
--------	----

## Use Again



### Repack and remanufacture

End of life manual availability	No need of specific recycling operations
Take-back	No