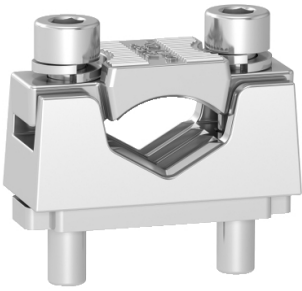


Product datasheet

Specifications



Pressure plate with contact prism clamp for multiple use terminals, FuPacT ISFT250, 70 to 150mm², Cu/Al conductors

LV480822

EAN Code: 3606481165817

Main

Product or component type	Pressure plate
Accessory / separate part category	Connection accessory
Range compatibility	FuPacT FuPacT ISFT ISFT250 fuse-switch disconnecter
Poles description	3P
Quantity per set	Set of 3

Complementary

Conductor material	Copper Aluminium
Connections - terminals	Cable connectors 70...150 mm ²

Packing Units

Unit Type of Package 1	PCE
Number of Units in Package 1	1
Package 1 Height	17.5 cm
Package 1 Width	10.0 cm
Package 1 Length	2.0 cm
Package 1 Weight	219.0 g
Unit Type of Package 2	S02
Number of Units in Package 2	40
Package 2 Height	15.0 cm
Package 2 Width	30.0 cm
Package 2 Length	40.0 cm
Package 2 Weight	8.76 kg

Contractual warranty

Warranty (in months)	18
----------------------	----

Disclaimer: This documentation is not intended as a substitute for and is not to be used for determining suitability or reliability of these products for specific user applications



Environmental Data

Schneider Electric aims to achieve Net Zero status by 2050 through supply chain partnerships, lower impact materials, and circularity via our ongoing “Use Better, Use Longer, Use Again” campaign to extend product lifetimes and recyclability.

[Environmental Data explained >](#)

[How we assess product sustainability >](#)

Use Better



Materials and Substances

Packaging made with recycled cardboard

Yes

Packaging without single use plastic

No

EU RoHS Directive

[Compliant](#)

REACH Regulation

[Free of Substances of Very High Concern above the threshold](#)

Use Longer



Lifetime extension

Repair

No

Use Again



Repack and remanufacture

Take-back

No