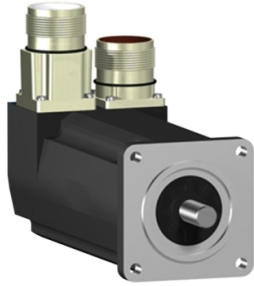


# Product data sheet

Specifications



## servo motor SH3 055 1,05Nm,nokey,multi,brake,str.conn,l P54/IP65,9k RPM

SH30553P02F1000

⚠ Discontinued - Service only

⚠ Discontinued on: Aug 10, 2022

⚠ End-of-service on: Mar 31, 2025

**Product availability: Non-Stock - Not normally stocked in distribution facility**

### Main

Range Compatibility	PacDrive 3
Device short name	SH3
Product or Component Type	Servo motor

### Complementary

Maximum mechanical speed	9000 rpm
[Us] rated supply voltage	115...480 V
Phase	Three phase
Continuous stall current	1.7 A
Continuous stall torque	9.29 lbf.in (1.05 N.m) 115...480 V three phase
Continuous power	680 W
Peak stall torque	31.0 lbf.in (3.5 N.m) 115...480 V three phase
Nominal output power	240 W 115 V single phase 460 W 230 V single phase 880 W 400 V three phase 970 W 480 V three phase
Nominal torque	10.001 lbf.in (1.13 N.m) 115 V single phase 9.7 lbf.in (1.1 N.m) 230 V single phase 7.17 lbf.in (0.81 N.m) 400 V three phase 7.17 lbf.in (0.81 N.m) 480 V three phase
Nominal speed	2000 rpm 115 V single phase 4000 rpm 230 V single phase 8000 rpm 400 V three phase 8000 rpm 480 V three phase
Maximum current Irms	6.5 A
Shaft end	Smooth shaft
Shaft diameter	0.4 in (9 mm)
Shaft length	0.8 in (20 mm)
IP degree of protection	IP54 shaft bushing without shaft seal ring: conforming to IEC 60034-5 IP65 motor: conforming to IEC 60034-5 IP65 shaft bushing: conforming to IEC 60034-5
Encoder type	Absolute multiturn SinCos Hiperface
Speed feedback resolution	128 periods
Holding brake	With

Price is "List Price" and may be subject to a trade discount – check with your local distributor or retailer for actual price.

<b>Holding torque</b>	7.08 lbf.in (0.8 N.m)
<b>Mounting Support</b>	International standard flange
<b>Motor flange size</b>	2.2 in (55 mm)
<b>Electrical Connection</b>	Straight connector
<b>Torque constant</b>	0.62 N.m/A 248 °F (120 °C)
<b>Back emf constant</b>	41 V/krpm 68 °F (20 °C)
<b>Number of motor poles</b>	3.0
<b>Rotor inertia</b>	0.155 kg.cm <sup>2</sup>
<b>Stator resistance</b>	10.4 Ohm
<b>Stator inductance</b>	37.98 mH
<b>Maximum radial force Fr</b>	190 N 8000 rpm 390 N 1000 rpm 310 N 2000 rpm 270 N 3000 rpm 240 N 4000 rpm 230 N 5000 rpm 210 N 6000 rpm 200 N 7000 rpm
<b>Maximum axial force Fa</b>	40 N
<b>Type of cooling</b>	Natural convection
<b>Length</b>	8.0 in (203 mm)
<b>Centring collar diameter</b>	1.6 in (40 mm)
<b>Centring collar depth</b>	0.08 in (2 mm)
<b>Number of mounting holes</b>	4
<b>Mounting holes diameter</b>	0.2 in (5.5 mm)
<b>Circle diameter of the mounting holes</b>	2.5 in (63 mm)
<b>Net Weight</b>	4.2 lb(US) (1.9 kg)
<b>Sizing reference</b>	SH30553P
<b>Network number of phases</b>	3
<b>Temperature copper hot</b>	266 °F (130 °C)
<b>Electrical connection</b>	straight connector
<b>Output current 3s peak</b>	6.5 A
<b>Inertia</b>	0.021 kg.cm <sup>2</sup> of brake 0.0 kg.cm <sup>2</sup> of motor

## Ordering and shipping details

<b>Category</b>	US1PC5218359
<b>Discount Schedule</b>	PC52
<b>GTIN</b>	3606481550514
<b>Returnability</b>	No
<b>Country of origin</b>	DE

## Packing Units

<b>Unit Type of Package 1</b>	PCE
<b>Nbr. of units in pkg.</b>	1

---

<b>Package 1 Height</b>	7.480 in (18.999 cm)
<b>Package 1 Width</b>	4.530 in (11.506 cm)
<b>Package 1 Length</b>	15.550 in (39.497 cm)
<b>Package weight(Lbs)</b>	4.25 lb(US) (1.93 kg)

---

## **Contractual warranty**

---

<b>Warranty (in months)</b>	18
-----------------------------	----



## Environmental Data

Schneider Electric aims to achieve Net Zero status by 2050 through supply chain partnerships, lower impact materials, and circularity via our ongoing “Use Better, Use Longer, Use Again” campaign to extend product lifetimes and recyclability.

[Environmental Data explained >](#)

[How we assess product sustainability >](#)

### Use Better

<b>Materials and Substances</b>	
Packaging made with recycled cardboard	No
Packaging without single use plastic	No
<a href="#">EU RoHS Directive</a>	Pro-active compliance (Product out of EU RoHS legal scope)
SCIP Number	Ead0850d-370a-47c5-8cf7-1d93c2c974a4
REACH Regulation	<a href="#">REACH Declaration</a>
California proposition 65	<b>WARNING:</b> This product can expose you to chemicals including: Lead and lead compounds, which is known to the State of California to cause cancer and birth defects or other reproductive harm. For more information go to <a href="http://www.P65Warnings.ca.gov">www.P65Warnings.ca.gov</a>
PVC free	Yes

### Use Longer

<b>Lifetime extension</b>	
Repair	No

### Use Again

<b>Repack and remanufacture</b>	
Circularity Profile	No need of specific recycling operations
Take-back	No