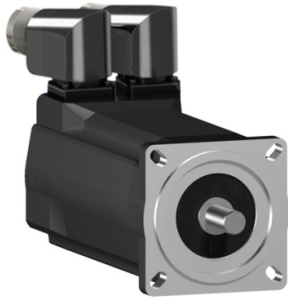


Product data sheet

Specifications



SH3 servomotor, 70mm, 2 stacks, high Torque, smooth Shaft, SinCos Singleturn 128, no Brake, angular, IP54/65

SH30702M01A2000

! Discontinued

! Discontinued on: Jun 20, 2025

Main

| | |
|---------------------------|-------------|
| Range Compatibility | PacDrive 3 |
| Device short name | SH3 |
| Product or Component Type | Servo motor |

Complementary

| | |
|---------------------------|--|
| Maximum mechanical speed | 8000 rpm |
| [Us] rated supply voltage | 115...480 V |
| Phase | Three phase |
| Continuous stall current | 1.5 A |
| Continuous stall torque | 18.06 lbf.in (2.04 N.m) 115...480 V three phase |
| Continuous power | 640 W |
| Peak stall torque | 67.3 lbf.in (7.6 N.m) 115...480 V three phase |
| Nominal output power | 700 W 115 V single phase 340 W 230 V single phase 660 W 400 V three phase 780 W 480 V three phase |
| Nominal torque | 19.5 lbf.in (2.2 N.m) 115 V single phase 19.03 lbf.in (2.15 N.m) 230 V single phase 17.97 lbf.in (2.03 N.m) 400 V three phase 17.97 lbf.in (2.03 N.m) 480 V three phase |
| Nominal speed | 750 rpm 115 V single phase 1500 rpm 230 V single phase 3000 rpm 400 V three phase 3600 rpm 480 V three phase |
| Maximum current Irms | 6.0 A |
| Shaft end | Smooth shaft |
| Shaft diameter | 0.4 in (11 mm) |
| Shaft length | 0.9 in (23 mm) |
| Key width | 0.2 in (4 mm) |
| IP degree of protection | IP54 shaft bushing without shaft seal ring: conforming to IEC 60034-5 IP65 motor: conforming to IEC 60034-5 IP65 shaft bushing: conforming to IEC 60034-5 |
| Encoder type | Absolute single turn SinCos Hiperface |
| Speed feedback resolution | 128 periods |
| Holding brake | Without |

Price is "List Price" and may be subject to a trade discount – check with your local distributor or retailer for actual price.

| | |
|--|--|
| Mounting Support | International standard flange |
| Motor flange size | 2.8 in (70 mm) |
| Electrical Connection | Straight connector |
| Torque constant | 1.36 N.m/A 248 °F (120 °C) |
| Back emf constant | 95.9 V/krpm 68 °F (20 °C) |
| Number of motor poles | 3 |
| Rotor inertia | 0.41 kg.cm ² |
| Stator resistance | 16.4 Ohm |
| Stator inductance | 41.55 mH |
| Maximum radial force Fr | 710 N 1000 rpm 560 N 2000 rpm 490 N 3000 rpm 450 N 4000 rpm 410 N 5000 rpm 390 N 6000 rpm |
| Maximum axial force Fa | 80 N |
| Type of cooling | Natural convection |
| Length | 7.4 in (187 mm) |
| Centring collar diameter | 2.4 in (60 mm) |
| Centring collar depth | 0.10 in (2.5 mm) |
| Number of mounting holes | 4 |
| Mounting holes diameter | 0.2 in (5.5 mm) |
| Circle diameter of the mounting holes | 3.2 in (82 mm) |
| Net Weight | 6.2 lb(US) (2.8 kg) |
| Sizing reference | SH30702M |
| Network number of phases | 3 |
| Temperature copper hot | 266 °F (130 °C) |
| Electrical connection | rotatable right angled connector |
| Output current 3s peak | 6.0 A |
| Inertia | 0.0 kg.cm ² of brake 0.41 kg.cm ² of motor |

Packing Units

| | |
|-------------------------------|-----|
| Unit Type of Package 1 | PCE |
| Nbr. of units in pkg. | 1 |

Contractual warranty

| | |
|-----------------------------|----|
| Warranty (in months) | 18 |
|-----------------------------|----|



Environmental Data

Schneider Electric aims to achieve Net Zero status by 2050 through supply chain partnerships, lower impact materials, and circularity via our ongoing “Use Better, Use Longer, Use Again” campaign to extend product lifetimes and recyclability.

[Environmental Data explained >](#)

[How we assess product sustainability >](#)

Use Better



Materials and Substances

Packaging made with recycled cardboard **Yes**

Packaging without single use plastic **No**

Use Longer



Lifetime extension

Repair **No**

Use Again



Repack and remanufacture

Take-back **No**