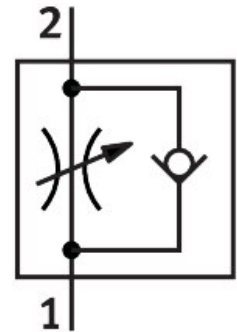



One-way flow control valve GRLA-3/8-QS-10-RS-D

Part number: 534343

FESTO



 [General operating condition](#)

Data sheet

Feature	Value
Valve function	One-way flow control function
Pneumatic connection 1	QS-10
Pneumatic connection 2	G3/8
Adjusting element	Knurled screw
Type of mounting	Screw-in With external thread
Standard nominal flow rate in flow control direction	900 l/min
Standard nominal flow rate in non-return direction	540 l/min ... 975 l/min
Operating pressure	0.2 bar ... 10 bar
Ambient temperature	-10 °C ... 60 °C
Maritime classification	See certificate
Mounting position	Any
Symbol	00991452
Operating pressure for entire temperature range	0.2 bar ... 10 bar
Standard flow rate in flow control direction 6 -> 0 bar	1400 l/min
Standard flow rate in non-return direction at 6 -> 0 bar	1160 l/min ... 1620 l/min
Operating medium	Compressed air as per ISO 8573-1:2010 [7:4:4]
Information on operating and pilot media	Operation with oil lubrication possible (required for further use)
LABS (PWIS) conformity	VDMA24364-B1/B2-L
Cleanroom suitability, measured according to ISO 14644-14	Class 4 according to ISO 14644-1
Storage temperature	-10 °C ... 40 °C
Temperature of medium	-10 °C ... 60 °C
Nominal tightening torque	10 Nm
Product weight	72 g
Note on materials	RoHS compliant
Seals material	NBR
Hollow bolt material	Wrought aluminum alloy Anodized
Releasing ring material	POM

Feature	Value
Knurled head material	Wrought aluminum alloy Anodized
Material of adjusting screw	high-alloy stainless steel
Swivel joint material	Die-cast zinc