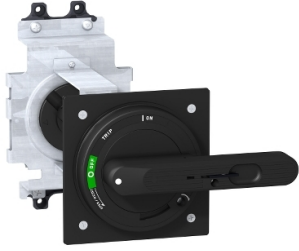


Product datasheet

Specifications



Rotary handle - for EZC400 - extended mounting

EZ4ROTE

! Discontinued on: 11 Oct 2022

! End-of-service on: 30 Mar 2021

! Discontinued

Main

Range of product	EZC400
Product or component type	Rotary handle
Accessory / separate part type	Control accessories
Rotary handle mounting style	Extended

Complementary

Rotary handle padlocking	1 to 3 padlocks
Rotary handle mounting location	Front

Packing Units

Unit Type of Package 1	PCE
Number of Units in Package 1	1
Package 1 Height	17.0 cm
Package 1 Width	19.0 cm
Package 1 Length	34.0 cm
Package 1 Weight	3.325 kg
Unit Type of Package 2	S04
Number of Units in Package 2	3
Package 2 Height	30.0 cm
Package 2 Width	40.0 cm
Package 2 Length	60.0 cm
Package 2 Weight	10.741 kg

Excluding VAT, FCA Jabal Ali & are subject to change – check with your local distributor.



Environmental Data

Schneider Electric aims to achieve Net Zero status by 2050 through supply chain partnerships, lower impact materials, and circularity via our ongoing “Use Better, Use Longer, Use Again” campaign to extend product lifetimes and recyclability.

[Environmental Data explained >](#)

[How we assess product sustainability >](#)

Use Better



Materials and Substances

EU RoHS Directive

[Compliant](#)

Use Longer



Lifetime extension

Repair

No