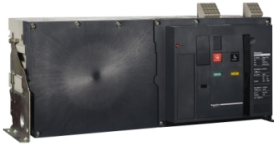


Product datasheet

Specifications



switch-disconnector Masterpact NW40HF - 4000 A - 600 V - 3 poles - draw - UL 489

64783

Main

Range	MasterPact
Product name	MasterPact NW UL 489
Product or component type	Switch disconnecter
Device short name	MasterPact NW40
Switch-disconnector name	MasterPact NW40HF
Device application	Protection
Poles description	3P
Network type	AC
Network frequency	50/60 Hz
[I _e] rated operational current	4000 A AC
[U _e] rated operational voltage	240...600 V AC 50/60 Hz
Breaking capacity code	HF
Suitability for isolation	Yes conforming to IEC 60947-3

Complementary

Control type	Push-button
Mounting mode	Drawout
Mounting support	Chassis
Operating rate	10 cyc/h maximum
[I _{cw}] rated short-time withstand current	100 kA at 220 V 100 kA at 480 V 85 kA at 600 V
Mechanical durability	10000 cycles with maintenance 5000 cycles without maintenance
Electrical durability	1000 cycles without maintenance
Connection pitch	115 mm
Height	479 mm
Width	786 mm
Depth	395 mm
Product weight	225 kg
Integral instant protection	75 kA

Environment

Standards	UL 489
------------------	--------

IP degree of protection	IP30
--------------------------------	------

Packing Units

Unit Type of Package 1	PCE
-------------------------------	-----

Number of Units in Package 1	1
-------------------------------------	---

Package 1 Height	63.0 cm
-------------------------	---------

Package 1 Width	120.0 cm
------------------------	----------

Package 1 Length	80.0 cm
-------------------------	---------

Package 1 Weight	137.0 kg
-------------------------	----------

Contractual warranty

Warranty (in months)	18
-----------------------------	----



Environmental Data

Schneider Electric aims to achieve Net Zero status by 2050 through supply chain partnerships, lower impact materials, and circularity via our ongoing “Use Better, Use Longer, Use Again” campaign to extend product lifetimes and recyclability.

[Environmental Data explained >](#)

[How we assess product sustainability >](#)

Use Better



Materials and Substances

Packaging made with recycled cardboard **Yes**

Packaging without single use plastic **No**

Use Longer



Lifetime extension

Repair **No**

Use Again



Repack and remanufacture

Take-back **No**

WEEE Label  **The product must be disposed on European Union markets following specific waste collection and never end up in rubbish bins**