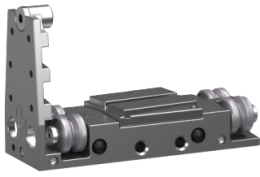


Product datasheet

Specifications



carrier, Lexium MC12 multi carrier,
10 pieces

LXMMC12CA5XS100

Main

Range of product	Lexium MC12 multi carrier
Accessory / separate part category	Spare parts
Product or component type	Carrier

Complementary

Length	92 mm
Width	50 mm
Depth	145 mm
Quantity per set	10 pieces
Net weight	8 kg
Accessory / separate part designation	Carrier

Packing Units

Unit Type of Package 1	PCE
Number of Units in Package 1	1
Package 1 Height	21.700 cm
Package 1 Width	30.500 cm
Package 1 Length	41.000 cm
Package 1 Weight	818.000 g

Contractual warranty

Warranty (in months)	18
----------------------	----

Disclaimer: This documentation is not intended as a substitute for and is not to be used for determining suitability or reliability of these products for specific user applications



Environmental Data

Schneider Electric aims to achieve Net Zero status by 2050 through supply chain partnerships, lower impact materials, and circularity via our ongoing “Use Better, Use Longer, Use Again” campaign to extend product lifetimes and recyclability.

[Environmental Data explained >](#)

[How we assess product sustainability >](#)



Environmental footprint

Total lifecycle Carbon footprint	40 kg CO2 eq.
Environmental Disclosure	Product Environmental Profile
Carbon footprint of the manufacturing phase [A1 to A3]	38 kg CO2 eq.
Carbon footprint of the distribution phase [A4]	1 kg CO2 eq.
Carbon footprint of the installation phase [A5]	0.1 kg CO2 eq.
Carbon footprint of the use phase [B2, B3, B4, B6]	0 kg CO2 eq.
Carbon footprint of the end-of-life phase [C1 to C4]	0.7 kg CO2 eq.

Use Better



Materials and Substances

Packaging made with recycled cardboard	No
Packaging without single use plastic	No
EU RoHS Directive	Compliant By Exemption
REACH Regulation	Reference contains Substances of Very High Concern above the threshold
PVC free	Yes

Use Longer



Lifetime extension

Repair	No
--------	----

Use Again



Repack and remanufacture

End of life manual availability	No need of specific recycling operations
Take-back	Yes

Offer Marketing Illustration

Product benefits / Features

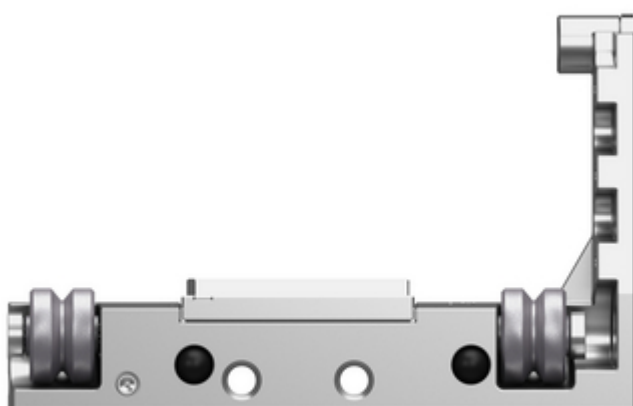
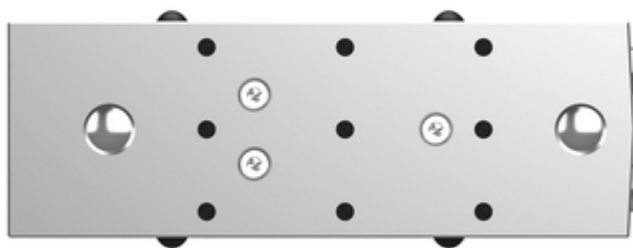
The infographic features a central image of a Lexium MC12 motor assembly. It is surrounded by four circular icons, each with a corresponding benefit text block. The background is a solid green color.

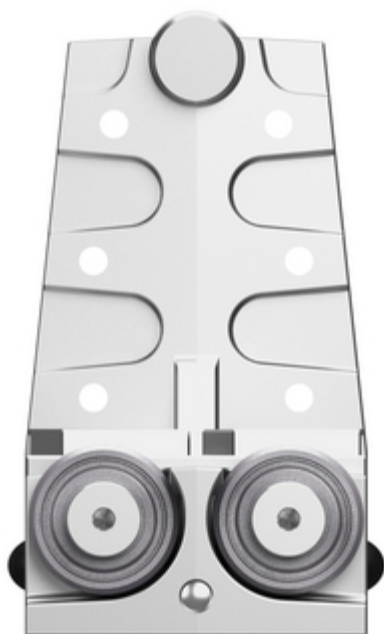
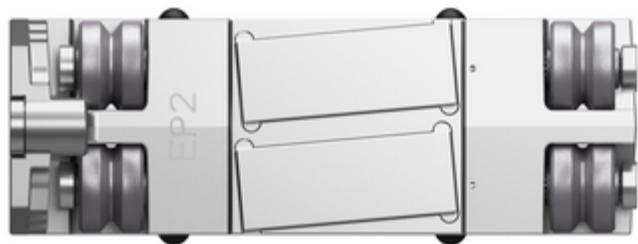
Benefits Lexium™ MC12

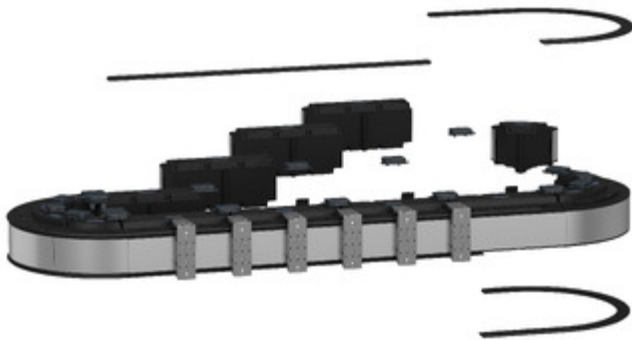
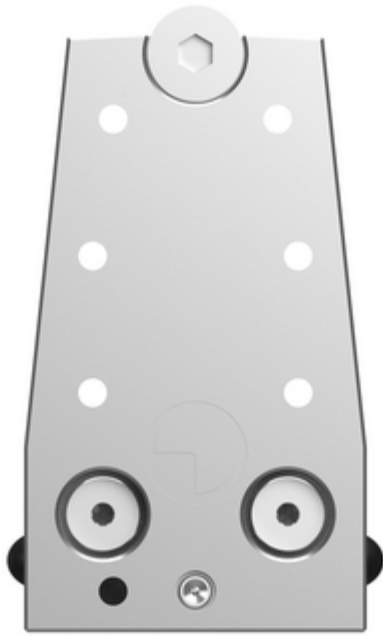
- Icon: Gear and lightning bolt**
Increase machine performance and flexibility by up to 50%
Increase your productivity and flexibility with a cost-effective, efficient, and wide range of products to choose from.
- Icon: Document with checkmark**
Reduce your time to market by up to 30% with improved design speed and design quality of your machines.
- Icon: Clock**
Achieve faster changeover time by a simple virtual commissioning and mechanical installation without any special tools.
- Icon: Magnifying glass over a graph**
Increase OEE of the machines
Get faster, flexible machines with less maintenance and a higher level of diagnostics.

Image of product / Alternate images

Alternative







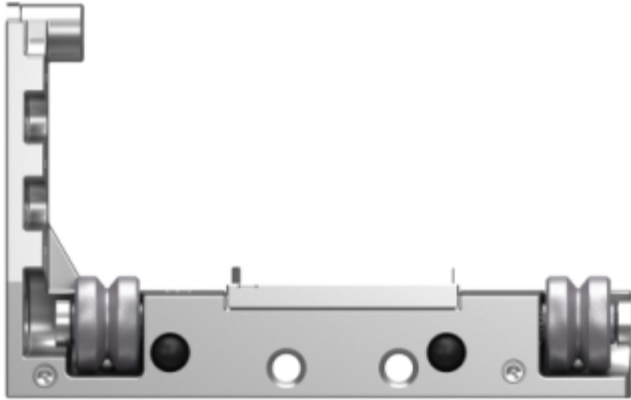


Image of product in real life situation

