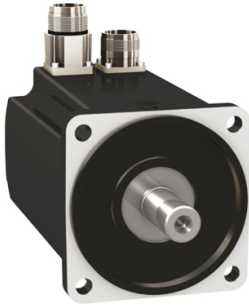


# Product data sheet

Specifications



servo motor BMH, Lexium 32,  
8.2Nm, 6000rpm, untapped shaft,  
with brake, IP65, IP67, 128 multiturn  
encoder, straight

BMH1003T22F1A

! Discontinued

! Discontinued on: Jun 30, 2023

**Product availability: Non-Stock - Not normally stocked in distribution facility**

## Main

Device short name	BMH
Product or Component Type	Servo motor
Maximum mechanical speed	6000 rpm
Continuous stall torque	72.6 lbf.in (8.2 N.m) LXM32.D30M2 10 A, 230 V, single phase
Peak stall torque	201.8 lbf.in (22.8 N.m) LXM32.D30M2 10 A, 230 V, single phase
Nominal output power	1450 W LXM32.D30M2 10 A, 230 V, single phase
Nominal torque	49.6 lbf.in (5.6 N.m) LXM32.D30M2 10 A, 230 V, single phase
Nominal speed	2500 rpm LXM32.D30M2 10 A, 230 V, single phase
Product compatibility	LXM32.D30M2 230 V single phase
Shaft end	Smooth shaft
IP Degree of Protection	IP65 standard IP67 with IP67 kit
Speed feedback resolution	131072 points/turn x 4096 turns
Holding brake	With
Mounting Support	International standard flange
Electrical Connection	Straight connectors

## Complementary

Range Compatibility	Lexium 32
[Us] rated supply voltage	240 V
Phase	Three phase
Continuous stall current	10 A
Continuous power	2.62 W
Maximum current Irms	30 A LXM32.D30M2
Maximum permanent current	33.85 A
Second shaft	Without second shaft end
Shaft diameter	0.7 in (19 mm)
Shaft length	1.6 in (40 mm)
Feedback type	Multiturn SinCos Hiperface

Price is "List Price" and may be subject to a trade discount – check with your local distributor or retailer for actual price.

<b>Holding torque</b>	79.7 lbf.in (9 N.m) holding brake
<b>Motor flange size</b>	3.9 in (100 mm)
<b>Number of motor stacks</b>	3
<b>Torque constant</b>	0.851 N.m/A 248 °F (120 °C)
<b>Back emf constant</b>	54.8 V/krpm 248 °F (120 °C)
<b>Number of motor poles</b>	10
<b>Rotor inertia</b>	10.3 kg.cm <sup>2</sup>
<b>Stator resistance</b>	0.47 Ohm 68 °F (20 °C)
<b>Stator inductance</b>	3 mH 68 °F (20 °C)
<b>Stator electrical time constant</b>	6.4 ms 68 °F (20 °C)
<b>Maximum radial force Fr</b>	1050 N 1000 rpm 830 N 2000 rpm 730 N 3000 rpm 660 N 4000 rpm 610 N 5000 rpm
<b>Maximum axial force Fa</b>	0.2 x Fr
<b>Brake pull-in power</b>	18 W
<b>Type of cooling</b>	Natural convection
<b>Length</b>	9.2 in (234.3 mm)
<b>Centring collar diameter</b>	3.7 in (95 mm)
<b>Centring collar depth</b>	0.1 in (3.5 mm)
<b>Number of mounting holes</b>	4
<b>Mounting holes diameter</b>	0.4 in (9 mm)
<b>Circle diameter of the mounting holes</b>	4.5 in (115 mm)
<b>Net Weight</b>	17.97 lb(US) (8.15 kg)
<b>Sizing reference</b>	BMH1003T
<b>Network number of phases</b>	3
<b>Accuracy error [angular]</b>	1.4 °
<b>Temperature copper hot</b>	275 °F (135 °C)
<b>Temperature magnet hot</b>	212 °F (100 °C)
<b>Temperature magnet rt</b>	68 °F (20 °C)

## Ordering and shipping details

<b>Category</b>	US1PC5318282
<b>Discount Schedule</b>	PC53
<b>GTIN</b>	3606485197821
<b>Returnability</b>	No

## Packing Units

<b>Unit Type of Package 1</b>	PCE
<b>Nbr. of units in pkg.</b>	1
<b>Package 1 Height</b>	8.7 in (22.0 cm)
<b>Package 1 Width</b>	7.9 in (20.0 cm)

---

<b>Package 1 Length</b>	15.7 in (40.0 cm)
<b>Package weight(Lbs)</b>	18.63 lb(US) (8.45 kg)
<b>Unit Type of Package 2</b>	P06
<b>Number of Units in Package 2</b>	24
<b>Package 2 Height</b>	41.3 in (105.0 cm)
<b>Package 2 Width</b>	31.496 in (80.000 cm)
<b>Package 2 Length</b>	23.622 in (60.000 cm)
<b>Package 2 Weight</b>	86.97 lb(US) (39.45 kg)

---

## **Contractual warranty**

---

<b>Warranty (in months)</b>	18
-----------------------------	----



## Environmental Data

Schneider Electric aims to achieve Net Zero status by 2050 through supply chain partnerships, lower impact materials, and circularity via our ongoing “Use Better, Use Longer, Use Again” campaign to extend product lifetimes and recyclability.

[Environmental Data explained >](#)

[How we assess product sustainability >](#)

### Use Better



#### Materials and Substances

[EU RoHS Directive](#)

Pro-active compliance (Product out of EU RoHS legal scope)

California proposition 65

**WARNING:** This product can expose you to chemicals including: Lead and lead compounds, which is known to the State of California to cause cancer and birth defects or other reproductive harm. For more information go to [www.P65Warnings.ca.gov](http://www.P65Warnings.ca.gov)

PVC free

Yes

### Use Longer



#### Lifetime extension

Repair

No

### Use Again



#### Repack and remanufacture

Circularity Profile

No need of specific recycling operations

WEEE Label



The product must be disposed on European Union markets following specific waste collection and never end up in rubbish bins.