

Inductive proximity sensors

XS range, Application

Factor 1 sensors for ferrous or non ferrous material detection and welding applications. Plastic case, 40 x 40 mm front face. 5 position turret head

Setting-up (continued)

Minimum mounting distances (mm)



Side by side

Face to face

Facing a metal object

Sensors flush mountable in metal

$e \geq 80$

$e \geq 200$

$e \geq 60$

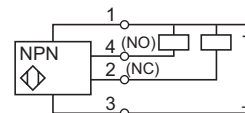
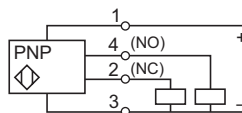
Wiring schemes

M12 connector

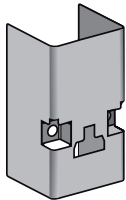


1: + V
2: NC Output
3: 0 V
4: NO Output

4-wire \overline{NPN} , NO + NC outputs



Accessories



XSZPSC2



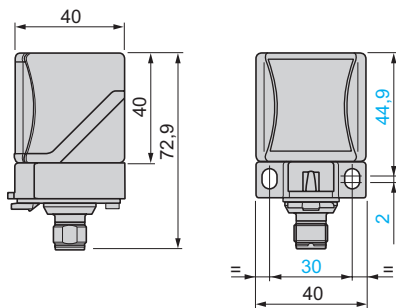
XSZPKC2

| Description | Use for | Reference | Weight kg |
|--|---------|----------------|-----------|
| Stainless steel rigid protective cover (only suitable for use when detecting from the top) | Welding | XSZPSC2 | 0.010 |
| Protective sheet (for sensing face of sensor) | Welding | XSZPKC2 | 0.010 |

[Sold in lots of 5](#)

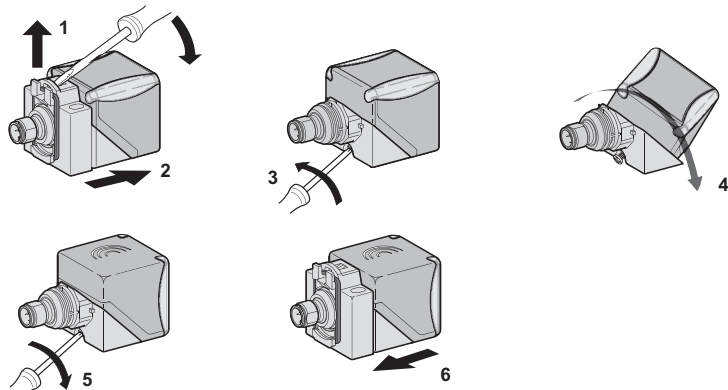
Dimensions

XS9C2A1PCM12 and XS9C2A1NCM12

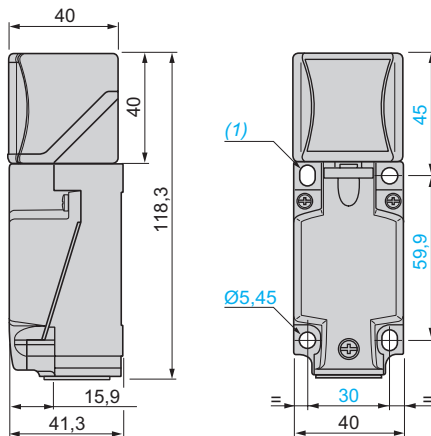


Head positions

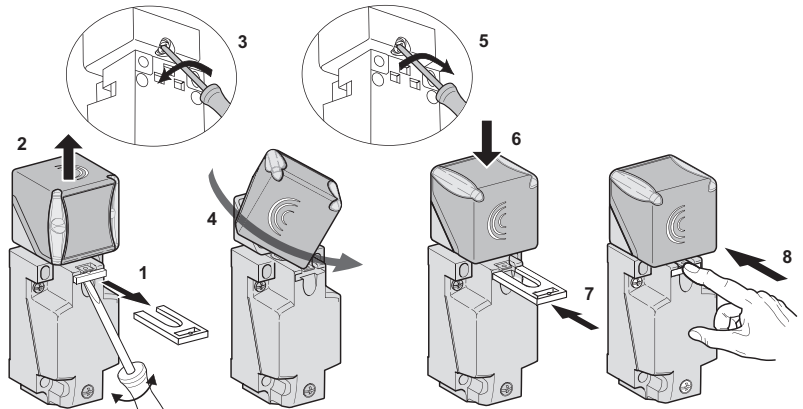
XS9C2A1PCM12 and XS9C2A1NCM12



XS9C4A1PCP20 and XS9C4A1NCP20



XS9C4A1PCP20 and XS9C4A1NCP20



(1) 2 elongated holes $\varnothing 5.3 \times 7$ mm.

Tightening torque of cover fixing screws and clamp screws: $< 1.2 \text{ N.m} / < 10.62 \text{ lb-in}$.