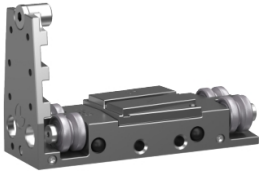


Product data sheet

Specifications

carrier, Lexium MC12, 1 piece



LXMMC12CA51S100

Product availability: Non-Stock - Not normally stocked in distribution facility

Main

Range of Product	Lexium MC12 multi carrier
Accessory / separate part category	Spare parts
Product or Component Type	Carrier

Complementary

Length	3.6 in (92 mm)
Width	2.0 in (50 mm)
Depth	5.7 in (145 mm)
Quantity per Set	1 piece
Net Weight	1.8 lb(US) (0.8 kg)
Accessory / separate part designation	Carrier

Ordering and shipping details

Category	US1PC5218357
Discount Schedule	PC52
GTIN	3606482085244
Returnability	No

Packing Units

Unit Type of Package 1	PCE
Nbr. of units in pkg.	1
Package 1 Height	6.142 in (15.600 cm)
Package 1 Width	6.614 in (16.800 cm)
Package 1 Length	6.614 in (16.800 cm)
Package weight(Lbs)	31.746 oz (900.000 g)

Contractual warranty

Warranty (in months)	18
----------------------	----

Price is "List Price" and may be subject to a trade discount – check with your local distributor or retailer for actual price.



Environmental Data

Schneider Electric aims to achieve Net Zero status by 2050 through supply chain partnerships, lower impact materials, and circularity via our ongoing “Use Better, Use Longer, Use Again” campaign to extend product lifetimes and recyclability.

[Environmental Data explained >](#)

[How we assess product sustainability >](#)



Environmental footprint

Total lifecycle Carbon footprint	5 kg CO2 eq.
Environmental Disclosure	Product Environmental Profile
Carbon footprint of the manufacturing phase [A1 to A3]	5 kg CO2 eq.
Carbon footprint of the distribution phase [A4]	0.1 kg CO2 eq.
Carbon footprint of the installation phase [A5]	0 kg CO2 eq.
Carbon footprint of the use phase [B2, B3, B4, B6]	0 kg CO2 eq.
Carbon footprint of the end-of-life phase [C1 to C4]	0.1 kg CO2 eq.

Use Better



Materials and Substances

Packaging made with recycled cardboard	Yes
Packaging without single use plastic	No
EU RoHS Directive	Pro-active compliance (Product out of EU RoHS legal scope)
REACH Regulation	REACH Declaration
PVC free	Yes

Use Longer



Lifetime extension

Repair	No
--------	----

Use Again



Repack and remanufacture

Recyclability potential, in %	87
Circularity Profile	No need of specific recycling operations
Take-back	No

Offer Marketing Illustration

Product benefits / Features

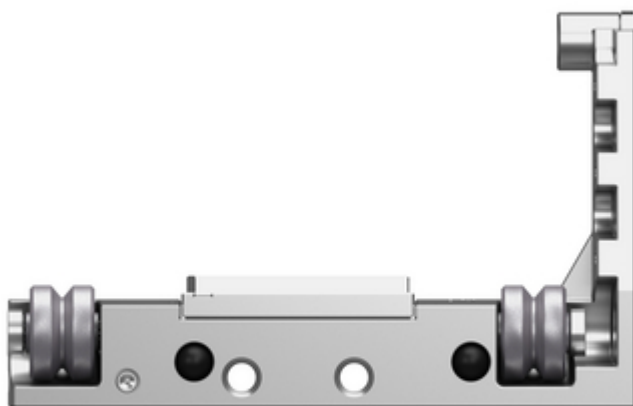
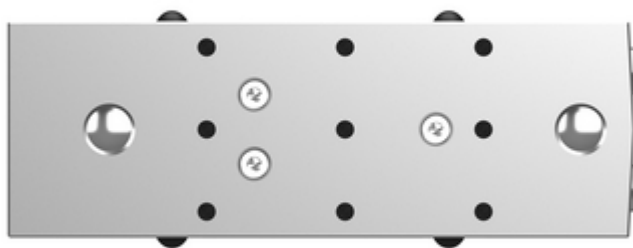
The infographic features a central 3D rendering of a Lexium MC12 terminal block. It is surrounded by four circular icons, each with a corresponding benefit text block. The background is a solid green color.

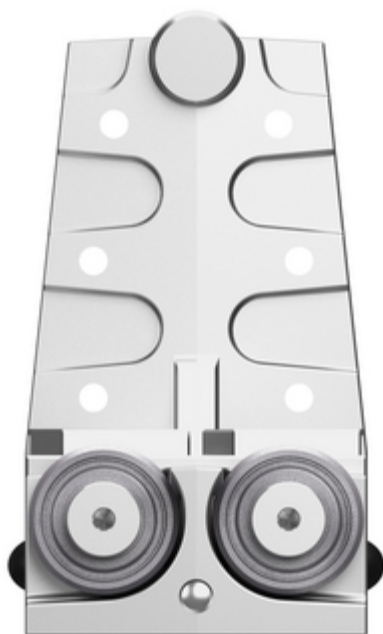
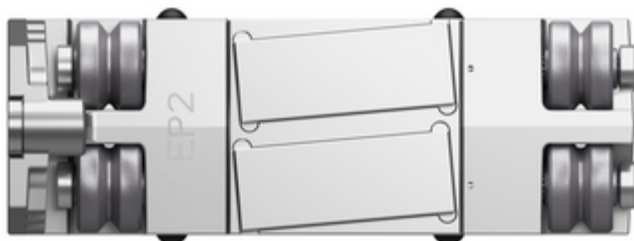
Benefits Lexium™ MC12

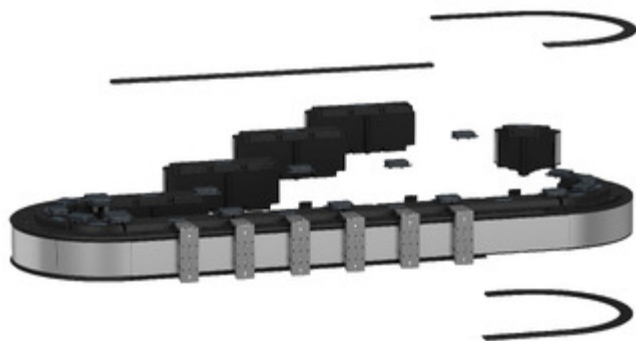
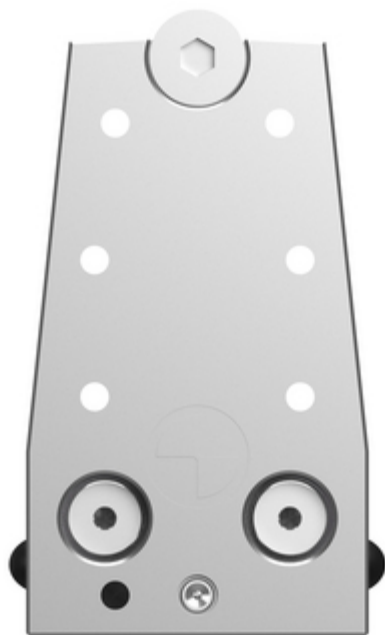
- Icon: Gear and lightning bolt**
Increase machine performance and flexibility by up to 50%
Increase your productivity and flexibility with a cost-effective, efficient, and wide range of products to choose from.
- Icon: Lightning bolt and clock**
Reduce your time to market by up to 30% with improved design speed and design quality of your machines.
- Icon: Clock**
Achieve faster changeover time by a simple virtual commissioning and mechanical installation without any special tools.
- Icon: Magnifying glass over a graph**
Increase OEE of the machines
Get faster, flexible machines with less maintenance and a higher level of diagnostics.

Image of product / Alternate images

Alternative







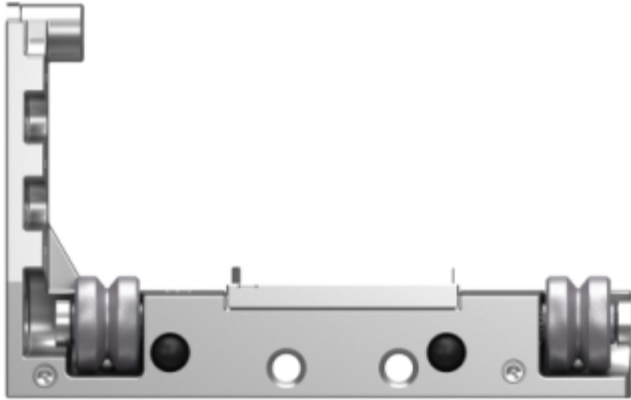


Image of product in real life situation

