



circuit breaker 3VT2 high breaking capacity Icu=65kA, 415V AC 4-pole; circuit breaker w/o Electronic Trip Unit N connected without auxiliary release without auxiliary/alarm switch

Model	
product brand name	SENTRON
product designation	3VT1_5 molded case circuit breakers
design of the actuating element	toggle handle
type of the driving mechanism motor drive	No
General technical data	
number of poles	4
size of the circuit-breaker	3VT2
mechanical service life (operating cycles) typical	30 000
electrical endurance (operating cycles) typical	3 000
utilization category	A
performance class for circuit breaker	H
operating frequency maximum	120 1/h
Voltage	
surge voltage resistance rated value	8 kV
Protection class	
protection class IP	IP40
Dissipation	
power loss [W] for rated value of the current at AC in hot operating state per pole	6 W
Main circuit	
operating frequency	
• 1 rated value	50 Hz
• 2 rated value	60 Hz
operational current rated value	250 A
Auxiliary circuit	
number of CO contacts for auxiliary contacts	0
number of NC contacts for auxiliary contacts	0
number of NO contacts for auxiliary contacts	0
Suitability	
suitability for use	Contact unit without release
suitability for use disconnecting means	Yes
Product details	
product component	
• trip indicator	No
• auxiliary switch	No
• voltage trigger	No
• undervoltage release	No
• undervoltage release with leading contact	No

product extension optional motor drive	Yes
--	-----

Product function

product function	
<ul style="list-style-type: none"> • grounding protection 	No
<ul style="list-style-type: none"> • for neutral conductors short-circuit and overload proof 	No
<ul style="list-style-type: none"> • phase failure detection 	No
<ul style="list-style-type: none"> • overload protection 	No

Short circuit

operating short-circuit current breaking capacity (Ics)	
<ul style="list-style-type: none"> • at 240 V rated value 	50 kA
<ul style="list-style-type: none"> • at 415 V rated value 	36 kA
<ul style="list-style-type: none"> • at 500 V rated value 	13 kA
<ul style="list-style-type: none"> • at 690 V rated value 	8 kA

maximum short-circuit current breaking capacity (Icu)	
<ul style="list-style-type: none"> • at 240 V rated value 	100 kA
<ul style="list-style-type: none"> • at 415 V rated value 	65 kA
<ul style="list-style-type: none"> • at 500 V rated value 	25 kA
<ul style="list-style-type: none"> • at 690 V rated value 	13 kA

Connections

arrangement of electrical connectors for main current circuit	front side
type of electrical connection for main current circuit	screw-type terminals

Mechanical Design

height	225 mm
width	140 mm
depth	117 mm
fastening method	fixed mounting
mounting position	with vertical mounting surface +/-180° rotatable, with vertical mounting surface +/- 30° tiltable to the front and back
Net Weight	4.13 kg

Environmental conditions

ambient temperature during operation	
<ul style="list-style-type: none"> • minimum 	-40 °C
<ul style="list-style-type: none"> • maximum 	70 °C
ambient temperature during storage	
<ul style="list-style-type: none"> • minimum 	-40 °C
<ul style="list-style-type: none"> • maximum 	70 °C

Certificates

reference code according to EN 61346-2	Q
reference code according to IEC 81346-2	Q

Approvals Certificates

Environment	General Product Approval	Test Certificates	other
-------------	--------------------------	-------------------	-------

[Environmental Confirmations](#)



[Confirmation](#)



[Type Test Certificates/Test Report](#)

[Confirmation](#)

other



[Miscellaneous](#)

Further information

Information on the packaging
<https://support.industry.siemens.com/cs/ww/en/view/109813875>
 Information for data generation and storage
<https://support.industry.siemens.com/cs/ww/en/view/109995012>
 Information- and Downloadcenter (Catalogs, Brochures,...)

<https://www.siemens.com/lowvoltage/catalogs>

Industry Mall (Online ordering system)

<https://mall.industry.siemens.com/mall/en/en/Catalog/product?mlfb=3VT2725-3AA46-0AA0>

Service&Support (Manuals, Certificates, Characteristics, FAQs,...)

<https://support.industry.siemens.com/cs/ww/en/ps/3VT2725-3AA46-0AA0>

Image database (product images, 2D dimension drawings, 3D models, device circuit diagrams, ...)

https://www.automation.siemens.com/bilddb/cax_en.aspx?mlfb=3VT2725-3AA46-0AA0

CAX-Online-Generator

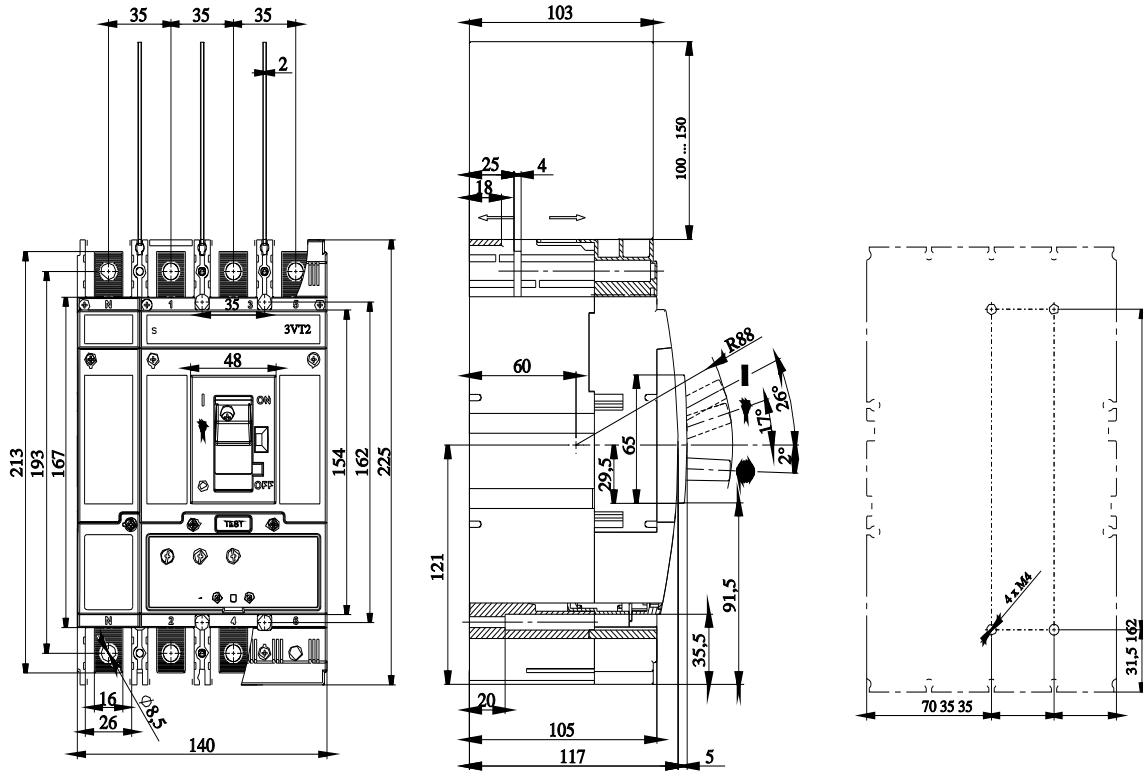
<https://www.siemens.com/cax>

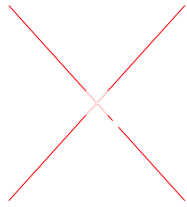
Tender specifications

<https://www.siemens.com/specifications>

Characteristic curves

https://curves.simaris.siemens.com/curves/<mmp_prod_noCOMP='HAUPT'></mmp_prod_no>





last modified:

6/15/2025 

