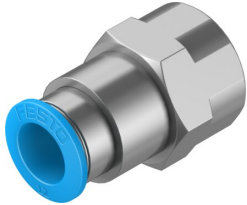


Push-in fitting QSF-1/2-12-B

Part number: 190653

FESTO



 General operating condition

Data sheet

Feature	Value
Size	Standard
Nominal width	11 mm
Tubing insertion depth	23.3 mm
Type of seal on screwed plug	Coating
Mounting position	Any
Design	Straight design
Pack size	1
Structural design	Push-pull principle
Operating pressure for entire temperature range	-0.095 MPa ... 0.6 MPa
Operating pressure for entire temperature range	-0.95 bar ... 6 bar
Operating pressure for entire temperature range	-13.775 psi ... 87 psi
Temperature-dependent operating pressure	-0.095 MPa ... 1.4 MPa
Temperature-dependent operating pressure	-0.95 bar ... 14 bar
Temperature-dependent operating pressure	-13.775 psi ... 203 psi
Information on operating pressure	Water: max. 0.6 MPa at max. 50 °C
Operating medium	Compressed air as per ISO 8573-1:2010 [7:-:-] Water (liquid, ice-free)
Information on operating and pilot media	Lubricated operation possible
Corrosion resistance class (CRC)	1 - Low corrosion stress
LABS (PWIS) conformity	VDMA24364-B1/B2-L
Ambient temperature	-10 °C ... 80 °C
Product weight	56 g
Type of mounting	External hexagon SW24
Pneumatic connection 1	Internal thread G1/2
Pneumatic connection 2	for pneumatic tubing outside diameter 12 mm
Releasing ring color	Blue
Note on materials	RoHS compliant
Housing material	Brass, nickel-plated
Releasing ring material	POM
Material of tubing seal	NBR
Material of tube retaining claw	high-alloy stainless steel