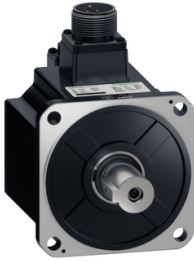


# Product datasheet

Specifications



## BEH18 servo motor, Lexium 18, 380V, 1.0kW, L100, 17bit MAG MT, brake

BEH18LH1033MF6D

### Main

Range	Lexium 18
Range compatibility	Easy Lexium 18
Device short name	BEH18
Product or component type	Servo motor

### Complementary

Maximum mechanical speed	3000 rpm
[Us] rated supply voltage	380 V
Network number of phases	Three phase
Continuous stall current	3.44 A
Continuous stall torque	3.18 N.m, 380 V, three phase
Continuous power	1000 W
Peak stall torque	9.54 N.m, 380 V, three phase
Nominal output power	1000 W, 380 V, three phase
Nominal torque	3.18 N.m, 380 V, three phase
Nominal speed	3000 rpm, 380 V, three phase
Maximum current Irms	10.32 A at 1 kW, 380 V
Maximum permanent current	10.32 A
Product compatibility	Motion servo drive motion servo motors motor at 1 kW, 380 V, three phase
Shaft end	Parallel key
Second shaft	Without second shaft end
Shaft diameter	24 mm
Shaft length	45 mm
Key width	8 mm
Feedback type	17 bits magnetic multi turn encoder
Speed feedback resolution	131072 points/turn
Holding brake	With
Holding torque	8 N.m
Mounting support	Asian standard flange
Motor flange size	100 mm
Electrical connection	2 connectors male/female

<b>Torque constant</b>	0.924 N.m/A at 40 °C
<b>Back emf constant</b>	63.29 V/krpm at 40 °C
<b>Number of motor poles</b>	10
<b>Rotor inertia</b>	2.59 kg.cm <sup>2</sup>
<b>Maximum radial force Fr</b>	686 N
<b>Maximum axial force Fa</b>	196 N
<b>Type of cooling</b>	Air-cooled
<b>Length</b>	156 mm
<b>Number of mounting holes</b>	4
<b>Mounting holes diameter</b>	9 mm
<b>Width</b>	100 mm
<b>Height</b>	144.5 mm
<b>Depth</b>	156 mm
<b>Product weight</b>	4.1 kg
<b>Encoder type</b>	Magnetic encoder
<b>Inertia</b>	2.59 kg.cm <sup>2</sup>

## Environment

<b>IP degree of protection</b>	IP67
<b>Ambient air temperature for operation</b>	0...40 °C

## Packing Units

<b>Unit Type of Package 1</b>	PCE
<b>Number of Units in Package 1</b>	1
<b>Package 1 Height</b>	20 cm
<b>Package 1 Width</b>	30 cm
<b>Package 1 Length</b>	40 cm
<b>Package 1 Weight</b>	5.7 kg
<b>Unit Type of Package 2</b>	P06
<b>Number of Units in Package 2</b>	16
<b>Package 2 Height</b>	95 cm
<b>Package 2 Width</b>	60 cm
<b>Package 2 Length</b>	80 cm
<b>Package 2 Weight</b>	97.2 kg



## Environmental Data

Schneider Electric aims to achieve Net Zero status by 2050 through supply chain partnerships, lower impact materials, and circularity via our ongoing “Use Better, Use Longer, Use Again” campaign to extend product lifetimes and recyclability.

[Environmental Data explained >](#)

[How we assess product sustainability >](#)



### Environmental footprint

Total lifecycle Carbon footprint	8 061 kg CO2 eq.
Carbon footprint of the manufacturing phase [A1 to A3]	30 kg CO2 eq.
Carbon footprint of the distribution phase [A4]	0.7 kg CO2 eq.
Carbon footprint of the installation phase [A5]	0.8 kg CO2 eq.
Carbon footprint of the use phase [B2, B3, B4, B6]	8 022 kg CO2 eq.
Carbon footprint of the end-of-life phase [C1 to C4]	8 kg CO2 eq.
Environmental Disclosure	<a href="#">Product Environmental Profile</a>

## Use Better



### Materials and Substances

EU RoHS Directive	<a href="#">Compliant By Exemption</a>
REACH Regulation	<a href="#">Reference contains Substances of Very High Concern above the threshold</a>

## Use Longer



### Lifetime extension

Repair	No
--------	----

## Use Again



### Repack and remanufacture

Recyclability potential, in %	90
End of life manual availability	<a href="#">End of Life Information</a>
Take-back	No