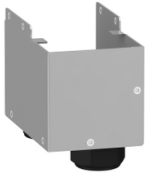


Product datasheet

Specifications



metal kit IP21, Altivar, for input EMC filter IP20, 0.4kg

VW3A47903

⚠ Discontinued on: 30 Sept 2023

⚠ Discontinued

Main

Range of product	Altivar
Accessory / separate part category	Protection accessories
Accessory / separate part type	Protection kit
Accessory / separate part destination	EMC input filter for variable speed drive
Product compatibility	VW3A4703
IP degree of protection	IP21 conforming to UL Type 1
Range compatibility	Altivar Process ATV900 Altivar Process ATV600

Complementary

Kit composition	Cable clips 1 IP21 cover
Net weight	0.4 kg

Packing Units

Unit Type of Package 1	PCE
Number of Units in Package 1	1
Package 1 Height	15.000 cm
Package 1 Width	35.500 cm
Package 1 Length	25.500 cm
Package 1 Weight	857.000 g
Unit Type of Package 2	P06
Number of Units in Package 2	16
Package 2 Height	75.000 cm
Package 2 Width	60.000 cm
Package 2 Length	80.000 cm
Package 2 Weight	22.212 kg

Contractual warranty

Warranty (in months)	18
----------------------	----



Environmental Data

Schneider Electric aims to achieve Net Zero status by 2050 through supply chain partnerships, lower impact materials, and circularity via our ongoing “Use Better, Use Longer, Use Again” campaign to extend product lifetimes and recyclability.

[Environmental Data explained >](#)

[How we assess product sustainability >](#)

Use Better



Materials and Substances

EU RoHS Directive

[Compliant](#)

Use Longer



Lifetime extension

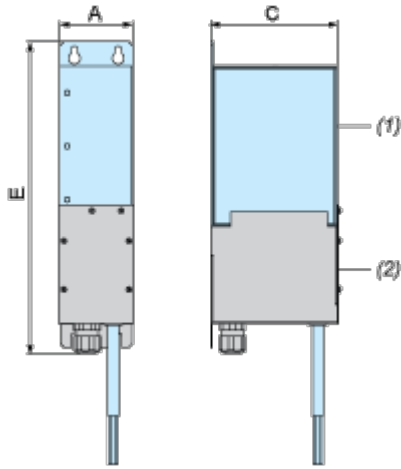
Repair

No

Dimensions Drawings

Dimensions

Kit IP21 Mounted Under the Output Filter



- (1) Filter
- (2) Kit IP21

Dimensions in mm

A	C	E
83	157	397

Dimensions in in.

A	C	E
3.3	6.2	15.6