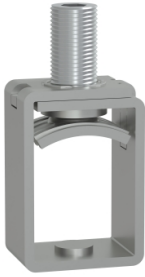


Product datasheet

Specifications



Bare cable connector, GoPact MCCB 400, 3 poles

G40SBC3P

⚠ Discontinued on: 01 Dec 2024

Price: 1,246.33 ZAR

⚠ To be discontinued

Main

Range of product	GoPact MCCB
Product or component type	Bare cable connector
Device application	Connection
Range compatibility	GoPact MCCB 400
Poles description	3P
Quantity	6

Complementary

Localisation on device	Upstream Downstream
[In] rated current	400 A
Conductor material	Steel
Connections - terminals	Clamp cage (cable) 120...240 mm ² flexible Clamp cage (cable) 120...300 mm ² rigid

Packing Units

Unit Type of Package 1	PCE
Number of Units in Package 1	1
Package 1 Height	9.3 cm
Package 1 Width	3.8 cm
Package 1 Length	12.6 cm
Package 1 Weight	580 g
Unit Type of Package 2	S02
Number of Units in Package 2	20
Package 2 Height	15 cm
Package 2 Width	30 cm
Package 2 Length	40 cm
Package 2 Weight	11.915 kg
Unit Type of Package 3	P06
Number of Units in Package 3	320
Package 3 Height	60 cm
Package 3 Width	60 cm

Excluding VAT and subject to change. Please check with your local distributor through "Where to buy"

Package 3 Length	80 cm
------------------	-------

Package 3 Weight	199.140 kg
------------------	------------

Contractual warranty

Warranty (in months)	18
----------------------	----



Environmental Data

Schneider Electric aims to achieve Net Zero status by 2050 through supply chain partnerships, lower impact materials, and circularity via our ongoing “Use Better, Use Longer, Use Again” campaign to extend product lifetimes and recyclability.

[Environmental Data explained >](#)

[How we assess product sustainability >](#)

Use Better



Materials and Substances

Packaging made with recycled cardboard	Yes
Packaging without single use plastic	No
EU RoHS Directive	Compliant
REACH Regulation	REACH Declaration
Halogen-free status	Halogen free plastic parts product
PVC free	Yes
Silicone-free	Yes

Use Longer



Lifetime extension

Repair	No
--------	----

Use Again



Repack and remanufacture

Take-back	No
-----------	----

Technical Illustration

Dimensions

