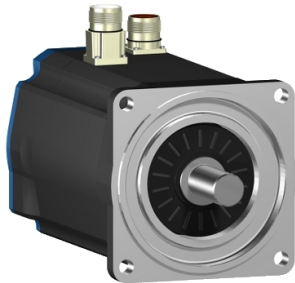


Product data sheet

Specifications



servo motor BSH, Lexium 05,
2.7N.m, 3000rpm, 100mm, keyed
shaft, Sincos single turn, with brake,
IP65, straight

BSH1001P31F1A

⚠ Discontinued

⚠ Discontinued on: Jun 30, 2023

Product availability: Non-Stock - Not normally stocked in distribution facility

Main

Device short name	BSH
Product or Component Type	Servo motor
Maximum mechanical speed	6000 rpm
Continuous stall torque	30.004 lbf.in (3.39 N.m) LXM15LD21M3, 230 V, single phase 23.9 lbf.in (2.7 N.m) LXM15LD10N4, 230 V, three phase 30.004 lbf.in (3.39 N.m) LXM15LD10N4, 400 V, three phase 30.004 lbf.in (3.39 N.m) LXM15LD10N4, 480 V, three phase 30.004 lbf.in (3.39 N.m) LXM15LD21M3, 230 V, three phase 30.004 lbf.in (3.39 N.m) LXM15LD17N4, 230 V, three phase 30.004 lbf.in (3.39 N.m) LXM15LD17N4 6 A, 400 V, three phase 30.004 lbf.in (3.39 N.m) LXM15LD17N4 6 A, 480 V, three phase 30.09 lbf.in (3.4 N.m) LXM05AD17M3X, 200...240 V, three phase 30.09 lbf.in (3.4 N.m) LXM05AD22N4, 380...480 V, three phase 30.09 lbf.in (3.4 N.m) LXM05BD17M3X, 200...240 V, three phase 30.09 lbf.in (3.4 N.m) LXM05BD22N4, 380...480 V, three phase 30.09 lbf.in (3.4 N.m) LXM05CD17M3X, 200...240 V, three phase 30.09 lbf.in (3.4 N.m) LXM05CD22N4, 380...480 V, three phase 29.2 lbf.in (3.3 N.m) LXM32.D18N4 6 A, 400 V, three phase 29.2 lbf.in (3.3 N.m) LXM32.D18N4 6 A, 480 V, three phase
Peak stall torque	62.66 lbf.in (7.08 N.m) LXM15LD21M3, 230 V, single phase 54.79 lbf.in (6.19 N.m) LXM15LD10N4, 230 V, three phase 54.79 lbf.in (6.19 N.m) LXM15LD10N4, 400 V, three phase 54.79 lbf.in (6.19 N.m) LXM15LD10N4, 480 V, three phase 62.66 lbf.in (7.08 N.m) LXM15LD21M3, 230 V, three phase 62.66 lbf.in (7.08 N.m) LXM15LD17N4, 230 V, three phase 62.66 lbf.in (7.08 N.m) LXM15LD17N4 6 A, 400 V, three phase 62.66 lbf.in (7.08 N.m) LXM15LD17N4 6 A, 480 V, three phase 62.8 lbf.in (7.1 N.m) LXM05AD17M3X, 200...240 V, three phase 62.8 lbf.in (7.1 N.m) LXM05AD22N4, 380...480 V, three phase 62.8 lbf.in (7.1 N.m) LXM05BD17M3X, 200...240 V, three phase 62.8 lbf.in (7.1 N.m) LXM05BD22N4, 380...480 V, three phase 62.8 lbf.in (7.1 N.m) LXM05CD17M3X, 200...240 V, three phase 62.8 lbf.in (7.1 N.m) LXM05CD22N4, 380...480 V, three phase 85.0 lbf.in (9.6 N.m) LXM32.D18N4 6 A, 400 V, three phase 85.0 lbf.in (9.6 N.m) LXM32.D18N4 6 A, 480 V, three phase
Nominal output power	1300 W LXM15LD17N4, 400 V, three phase 1500 W LXM15LD10N4, 480 V, three phase 950 W LXM15LD21M3, 230 V, single phase 1300 W LXM15LD10N4, 400 V, three phase 1500 W LXM15LD17N4, 480 V, three phase 500 W LXM05AD17M3X, 200...240 V, three phase 500 W LXM05BD17M3X 6 A, 200...240 V, three phase 500 W LXM05CD17M3X 6 A, 200...240 V, three phase 850 W LXM15LD10N4, 230 V, three phase 900 W LXM05AD22N4, 380...480 V, three phase 900 W LXM05BD22N4, 380...480 V, three phase 900 W LXM05CD22N4, 380...480 V, three phase 950 W LXM15LD17N4, 230 V, three phase 950 W LXM15LD21M3, 230 V, three phase 1100 W LXM32.D18N4 6 A, 400 V, three phase 1100 W LXM32.D18N4 6 A, 480 V, three phase

Price is "List Price" and may be subject to a trade discount – check with your local distributor or retailer for actual price.

Nominal torque	<p>26.6 lbf.in (3 N.m) LXM15LD21M3, 230 V, single phase</p> <p>22.1 lbf.in (2.5 N.m) LXM15LD10N4, 480 V, three phase</p> <p>22.1 lbf.in (2.5 N.m) LXM15LD17N4, 480 V, three phase</p> <p>23.9 lbf.in (2.7 N.m) LXM15LD10N4, 230 V, three phase</p> <p>23.9 lbf.in (2.7 N.m) LXM15LD10N4, 400 V, three phase</p> <p>23.9 lbf.in (2.7 N.m) LXM15LD17N4, 400 V, three phase</p> <p>25.84 lbf.in (2.92 N.m) LXM05AD22N4 6 A, 380...480 V, three phase</p> <p>25.84 lbf.in (2.92 N.m) LXM05BD22N4 6 A, 380...480 V, three phase</p> <p>25.84 lbf.in (2.92 N.m) LXM05CD22N4, 380...480 V, three phase</p> <p>26.6 lbf.in (3 N.m) LXM15LD17N4, 230 V, three phase</p> <p>26.6 lbf.in (3 N.m) LXM15LD21M3, 230 V, three phase</p> <p>27.97 lbf.in (3.16 N.m) LXM05AD17M3X, 200...240 V, three phase</p> <p>27.97 lbf.in (3.16 N.m) LXM05BD17M3X, 200...240 V, three phase</p> <p>27.97 lbf.in (3.16 N.m) LXM05CD17M3X, 200...240 V, three phase</p> <p>23.9 lbf.in (2.7 N.m) LXM32.D18N4 6 A, 400 V, three phase</p> <p>23.9 lbf.in (2.7 N.m) LXM32.D18N4 6 A, 480 V, three phase</p>
-----------------------	---

Nominal speed	<p>3000 rpm LXM15LD10N4, 230 V, three phase</p> <p>3000 rpm LXM15LD21M3, 230 V, single phase</p> <p>3000 rpm LXM05AD22N4, 380...480 V, three phase</p> <p>3000 rpm LXM05BD22N4, 380...480 V, three phase</p> <p>3000 rpm LXM05CD22N4, 380...480 V, three phase</p> <p>3000 rpm LXM15LD17N4, 230 V, three phase</p> <p>3000 rpm LXM15LD21M3 6 A, 230 V, three phase</p> <p>1500 rpm LXM05AD17M3X 6 A, 200...240 V, three phase</p> <p>1500 rpm LXM05BD17M3X, 200...240 V, three phase</p> <p>1500 rpm LXM05CD17M3X, 200...240 V, three phase</p> <p>4500 rpm LXM15LD10N4, 400 V, three phase</p> <p>4500 rpm LXM15LD17N4, 400 V, three phase</p> <p>6000 rpm LXM15LD10N4, 480 V, three phase</p> <p>6000 rpm LXM15LD17N4, 480 V, three phase</p> <p>4000 rpm LXM32.D18N4 6 A, 400 V, three phase</p> <p>4000 rpm LXM32.D18N4 6 A, 480 V, three phase</p>
----------------------	---

Product compatibility	<p>LXM15LD21M3 230 V single phase</p> <p>LXM15LD10N4 400 V three phase</p> <p>LXM05AD17M3X 200...240 V three phase</p> <p>LXM05BD17M3X 200...240 V three phase</p> <p>LXM05CD17M3X 200...240 V three phase</p> <p>LXM15LD10N4 230 V three phase</p> <p>LXM15LD10N4 480 V three phase</p> <p>LXM15LD21M3 230 V three phase</p> <p>LXM15LD17N4 230 V three phase</p> <p>LXM05AD22N4 380...480 V three phase</p> <p>LXM05BD22N4 380...480 V three phase</p> <p>LXM05CD22N4 380...480 V three phase</p> <p>LXM15LD17N4 400 V three phase</p> <p>LXM15LD17N4 480 V three phase</p> <p>LXM32.D18N4 400 V three phase</p> <p>LXM32.D18N4 480 V three phase</p>
------------------------------	---

Shaft end	Keyed
------------------	-------

IP Degree of Protection	<p>IP65 standard</p> <p>IP67 with IP67 kit</p>
--------------------------------	--

Speed feedback resolution	131072 points/turn
----------------------------------	--------------------

Holding brake	With
----------------------	------

Mounting Support	International standard flange
-------------------------	-------------------------------

Electrical Connection	Straight connectors
------------------------------	---------------------

Complementary

Range Compatibility	<p>Lexium 32</p> <p>Lexium 05</p> <p>Lexium 15</p>
----------------------------	--

supply voltage max	480 V
---------------------------	-------

Phase	Three phase
--------------	-------------

Continuous stall current	3.5 A
---------------------------------	-------

maximum continuous power	1.6 W
---------------------------------	-------

Maximum current Irms	12 A LXM15LD21M3 12 A LXM15LD10N4 12 A LXM15LD17N4 12 A LXM05AD17M3X 12 A LXM05AD22N4 12 A LXM05BD17M3X 12 A LXM05BD22N4 12 A LXM05CD17M3X 12 A LXM05CD22N4 12 A LXM32.D18N4
Maximum permanent current	12 A
Switching frequency	8 kHz
Second shaft	Without second shaft end
Shaft diameter	0.7 in (19 mm)
Shaft length	1.6 in (40 mm)
Key width	1.2 in (30 mm)
Feedback type	Single turn SinCos Hiperface
Holding torque	79.7 lbf.in (9 N.m) holding brake
Motor flange size	3.9 in (100 mm)
Number of motor stacks	1
Torque constant	0.89 N.m/A 248 °F (120 °C)
Back emf constant	60 V/krpm 248 °F (120 °C)
Number of motor poles	8
Rotor inertia	2.018 kg.cm ²
Stator resistance	3.8 Ohm 68 °F (20 °C)
Stator inductance	17.6 mH 68 °F (20 °C)
Stator electrical time constant	4.63 ms 68 °F (20 °C)
Maximum radial force Fr	530 N 5000 rpm 570 N 4000 rpm 630 N 3000 rpm 720 N 2000 rpm 900 N 1000 rpm
Maximum axial force Fa	0.2 x Fr
Brake pull-in power	18 W
Type of cooling	Natural convection
Length	7.9 in (199.5 mm)
Centring collar diameter	3.7 in (95 mm)
Centring collar depth	0.1 in (3.5 mm)
Number of mounting holes	4
Mounting holes diameter	0.4 in (9 mm)
Circle diameter of the mounting holes	4.5 in (115 mm)
Net Weight	10.6 lb(US) (4.8 kg)
Sizing reference	BSH1001P
Network number of phases	3
Accuracy error [angular]	1.4 °
Temperature copper hot	248 °F (120 °C)
Temperature magnet hot	212 °F (100 °C)

Temperature magnet rt	68 °F (20 °C)
-----------------------	---------------

Ordering and shipping details

Category	US1PC5318282
----------	--------------

Discount Schedule	PC53
-------------------	------

GTIN	3389118138414
------	---------------

Returnability	No
---------------	----

Packing Units

Unit Type of Package 1	PCE
------------------------	-----

Nbr. of units in pkg.	1
-----------------------	---

Package 1 Height	6.06 in (15.4 cm)
------------------	-------------------

Package 1 Width	6.4 in (16.3 cm)
-----------------	------------------

Package 1 Length	16.02 in (40.7 cm)
------------------	--------------------

Package weight(Lbs)	10.91 lb(US) (4.95 kg)
---------------------	------------------------

Contractual warranty

Warranty (in months)	18
----------------------	----



Environmental Data

Schneider Electric aims to achieve Net Zero status by 2050 through supply chain partnerships, lower impact materials, and circularity via our ongoing “Use Better, Use Longer, Use Again” campaign to extend product lifetimes and recyclability.

[Environmental Data explained >](#)

[How we assess product sustainability >](#)

Use Better



Materials and Substances

[EU RoHS Directive](#)

Pro-active compliance (Product out of EU RoHS legal scope)

California proposition 65

WARNING: This product can expose you to chemicals including: Lead and lead compounds, which is known to the State of California to cause cancer and birth defects or other reproductive harm. For more information go to www.P65Warnings.ca.gov

Use Longer



Lifetime extension

Repair

No

Use Again



Repack and remanufacture

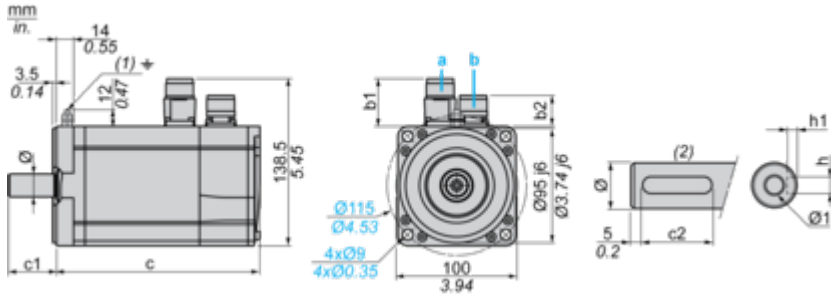
Circularity Profile

No need of specific recycling operations

Dimensions Drawings

Servo Motors Dimensions

Example with Straight Connectors



- a: Power supply for servo motor brake
- b: Power supply for servo motor encoder
- (1) M4 screw
- (2) Shaft end, keyed slot (optional)

Dimensions in mm

Straight connectors		Rotatable angled connectors		c (without brake)	c (with brake)	c1	c2	h	h1	Ø	Ø1 for screws
b1	b2	b1	b2								
39.5	25.5	39.5	39.5	169	200	40	30	6 N9	3.5 ^{+0.1} ₀	19 k6	M6 x 16

Dimensions in in.

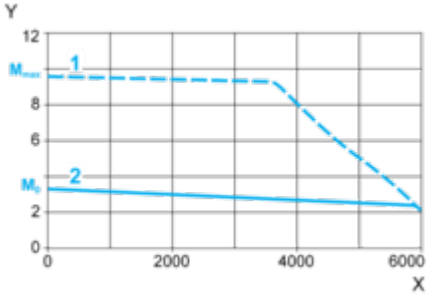
Straight connectors		Rotatable angled connectors		c (without brake)	c (with brake)	c1	c2	h	h1	Ø	Ø1 for screws
b1	b2	b1	b2								
1.55	1.00	1.55	1.55	6.65	7.87	1.57	1.18	0.24 N9	0.14 ^{+0.1} ₀	0.75 k6	M6 x 0.63

Performance Curves

400 V 3-Phase Supply Voltage

Torque/Speed Curves

Servo motor with LXM32•D18N4 servo drive



X Speed in rpm

Y Torque in Nm

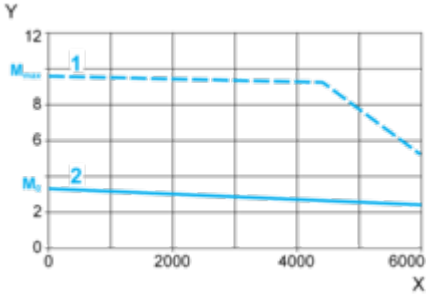
1 Peak torque

2 Continuous torque

480 V 3-Phase Supply Voltage

Torque/Speed Curves

Servo motor with LXM32•D18N4 servo drive



X Speed in rpm

Y Torque in Nm

1 Peak torque

2 Continuous torque