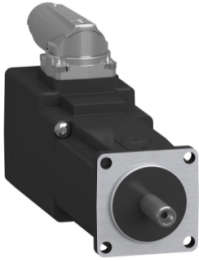


Product datasheet

Specifications



SH3 servomotor, 40mm, 2 stacks, smooth Shaft, Multiturn DSL 15bit, Brake, OneMotorCable angular M17, IP54/65

SH30402P0DF4000

EAN Code: 3606481801579

Main

Range compatibility	PacDrive 3
Device short name	SH3
Product or component type	Servo motor

Complementary

Maximum mechanical speed	10000 rpm
[Us] rated supply voltage	115...480 V
Network number of phases	Three phase
Continuous stall current	1.5 A
Continuous stall torque	0.39 N.m at 115...480 V three phase
Continuous power	290 W
Peak stall torque	1.5 N.m at 480 V three phase
Nominal output power	152 W at 230 V single phase 292 W at 400 V three phase 292 W at 480 V three phase
Nominal torque	0.37 N.m at 230 V single phase 0.31 N.m at 400 V three phase 0.31 N.m at 480 V three phase
Nominal speed	4000 rpm at 230 V single phase 9000 rpm at 400 V three phase 9000 rpm at 480 V three phase
Maximum current Irms	7.2 A
Shaft end	Smooth shaft
Shaft diameter	8 mm
Shaft length	25 mm
IP degree of protection	IP65 motor: conforming to IEC 60034-5 IP54 shaft bushing without shaft seal ring: conforming to IEC 60034-5
Encoder type	Absolute multiturn Hiperface DSL
Speed feedback resolution	32768 points/turn x 4096 turns
Holding brake	With
Holding torque	0.4 N.m
Mounting support	International standard flange
Motor flange size	40 mm
Electrical connection	Rotatable right angled connector

Torque constant	0.26 N.m/A at 120 °C
Back emf constant	18 V/krpm at 20 °C
Number of motor poles	5
Rotor inertia	0.0588 kg.cm ²
Stator resistance	11.6 Ohm
Stator inductance	12.8 mH
Brake pull-in power	5.8 W
Type of cooling	Natural convection
Length	130.9 mm
Centring collar diameter	30 mm
Centring collar depth	2.5 mm
Number of mounting holes	4
Mounting holes diameter	4.5 mm
Circle diameter of the mounting holes	46 mm
Product weight	0.75 kg
Sizing reference	SH30402P
Network number of phases	3
Temperature copper hot	130 °C
Electrical connection	quicklock rotatable right angled connector

Packing Units

Unit Type of Package 1	PCE
Number of Units in Package 1	1
Package 1 Height	11.0 cm
Package 1 Width	17.0 cm
Package 1 Length	24.0 cm
Package 1 Weight	974.0 g

Contractual warranty

Warranty (in months)	18
-----------------------------	----



Environmental Data

Schneider Electric aims to achieve Net Zero status by 2050 through supply chain partnerships, lower impact materials, and circularity via our ongoing “Use Better, Use Longer, Use Again” campaign to extend product lifetimes and recyclability.

[Environmental Data explained >](#)

[How we assess product sustainability >](#)



Environmental footprint

Total lifecycle Carbon footprint	704 kg CO2 eq.
Carbon footprint of the manufacturing phase [A1 to A3]	4 kg CO2 eq.
Carbon footprint of the distribution phase [A4]	0.1 kg CO2 eq.
Carbon footprint of the installation phase [A5]	0 kg CO2 eq.
Carbon footprint of the use phase [B2, B3, B4, B6]	700 kg CO2 eq.
Carbon footprint of the end-of-life phase [C1 to C4]	0.1 kg CO2 eq.

Use Better



Materials and Substances

Packaging made with recycled cardboard	No
Packaging without single use plastic	No
SCIP Number	Ead0850d-370a-47c5-8cf7-1d93c2c974a4
EU RoHS Directive	Compliant By Exemption
REACH Regulation	Reference contains Substances of Very High Concern above the threshold
PVC free	Yes

Use Longer



Lifetime extension

Repair	No
--------	----

Use Again



Repack and remanufacture

End of life manual availability	No need of specific recycling operations
Take-back	No