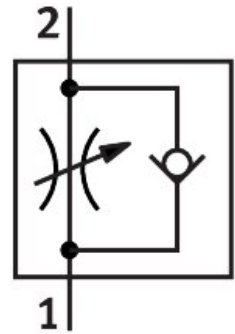


One-way flow control valve GRLA-3/8-QB-1/2-U

Part number: 534667

FESTO



 [General operating condition](#)

Data sheet

Feature	Value
Valve function	Exhaust air flow control non-return function
Pneumatic connection 1	QB-1/2
Pneumatic connection 2	3/8 NPT
Actuation type	Manual
Adjusting element	Slotted screw
Type of mounting	Screw-in With external thread
Standard nominal flow rate in flow control direction	3902.54 l/min
Standard nominal flow rate in non-return direction	3000 l/min ... 3978.814 l/min
Ambient temperature	0 °C ... 60 °C
Mounting position	Any
Symbol	00991452
Operating pressure for entire temperature range	-0.951 bar ... 7.998 bar
Standard flow rate in flow control direction 6 → 0 bar	6419.5 l/min
Standard flow rate in non-return direction at 6 → 0 bar	6419.492 l/min ... 6673.729 l/min
Operating medium	Compressed air as per ISO 8573-1:2010 [7:4:4]
Information on operating and pilot media	Operation with oil lubrication possible (required for further use)
LABS (PWIS) conformity	VDMA24364 Zone III
Temperature of medium	0 °C ... 60 °C
Max. tightening torque	21.964 Nm
Product weight	73.993 g
Material of screwed plug	Brass Nickel-plated
Note on materials	RoHS compliant
Seals material	NBR
Hollow bolt material	Brass Nickel-plated
Releasing ring material	POM
Knurled head material	Brass Nickel-plated

Feature	Value
Material of adjusting screw	Brass Nickel-plated
Swivel joint material	PBT-reinforced