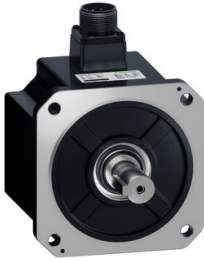


# Product datasheet

Specifications



## Servo motor BEH18, Lexium 18, 1.0kW, 380V, M130, 17bit, MAG MT

BEH18MM1023MA6D

### Main

Range	Lexium 18
Range compatibility	Easy Lexium 18
Device short name	BEH18
Product or component type	Servo motor

### Complementary

Maximum mechanical speed	3000.0 rpm
[Us] rated supply voltage	380 V
Network number of phases	Three phase
Continuous stall current	2.8 A
Continuous stall torque	4.77 N.m, 380 V, three phase
Continuous power	1000 W
Peak stall torque	14.31 N.m, 380 V, three phase
Nominal output power	1000 W, 380 V, three phase
Nominal torque	4.77 N.m, 380 V, three phase
Nominal speed	2000 rpm, 380 V, three phase
Maximum current Irms	8.39 A at 1.0 kW, 380 V
Maximum permanent current	8.39 A
Product compatibility	Motion servo drive motion servo motors motor at 1.0 kW, 380 V, three phase
Shaft end	Parallel key
Second shaft	Without second shaft end
Shaft diameter	22.0 mm
Shaft length	58.0 mm
Key width	8.0 mm
Feedback type	17 bits magnetic multi turn encoder
Speed feedback resolution	131072 points/turn
Holding brake	Without
Mounting support	Asian standard flange
Motor flange size	130 mm
Electrical connection	2 connectors male/female
Torque constant	1.704 N.m/A at 40 °C

Back emf constant	108.1 V/krpm at 40 °C
Number of motor poles	10
Rotor inertia	13.62 kg.cm <sup>2</sup>
Maximum radial force Fr	686 N
Maximum axial force Fa	196 N
Type of cooling	Air-cooled
Length	136.6 mm
Number of mounting holes	4
Circle diameter of the mounting holes	9 mm
Width	136.6 mm
Height	130 mm
Depth	174.5 mm
Product weight	5.9 kg
Network number of phases	3
Encoder type	Magnetic encoder

## Environment

IP degree of protection	IP67
Ambient air temperature for operation	0...40 °C

## Packing Units

Unit Type of Package 1	PCE
Number of Units in Package 1	1
Package 1 Height	39.8 cm
Package 1 Width	29.9 cm
Package 1 Length	20 cm
Package 1 Weight	7.7 kg
Unit Type of Package 2	P06
Number of Units in Package 2	16
Package 2 Height	80 cm
Package 2 Width	60 cm
Package 2 Length	95 cm
Package 2 Weight	129.2 kg

## Contractual warranty

Warranty (in months)	18
----------------------	----



## Environmental Data

Schneider Electric aims to achieve Net Zero status by 2050 through supply chain partnerships, lower impact materials, and circularity via our ongoing “Use Better, Use Longer, Use Again” campaign to extend product lifetimes and recyclability.

[Environmental Data explained >](#)

[How we assess product sustainability >](#)



### Environmental footprint

Total lifecycle Carbon footprint	8 078 kg CO2 eq.
Carbon footprint of the manufacturing phase [A1 to A3]	43 kg CO2 eq.
Carbon footprint of the distribution phase [A4]	0.9 kg CO2 eq.
Carbon footprint of the installation phase [A5]	1 kg CO2 eq.
Carbon footprint of the use phase [B2, B3, B4, B6]	8 022 kg CO2 eq.
Carbon footprint of the end-of-life phase [C1 to C4]	11 kg CO2 eq.
Environmental Disclosure	<a href="#">Product Environmental Profile</a>

## Use Better



### Materials and Substances

Packaging made with recycled cardboard	No
Packaging without single use plastic	No
EU RoHS Directive	<a href="#">Compliant By Exemption</a>
REACH Regulation	<a href="#">Reference contains Substances of Very High Concern above the threshold</a>

## Use Longer



### Lifetime extension

Repair	No
--------	----

## Use Again



### Repack and remanufacture

End of life manual availability	<a href="#">End of Life Information</a>
Take-back	No