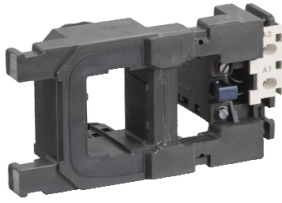


Product datasheet

Specifications



contactor coil - LX1F - 30 V AC - 40/400 Hz

LX1FH0302

⚠ Discontinued on: 1 Nov 2020

⚠ Discontinued

Main

Range	TeSys
Product or component type	Contactor coil
Device short name	LX1FH
Range compatibility	TeSys TeSys F LC1F contactor
Product compatibility	LC1F330 LC1F265
Control circuit type	AC at 40...400 Hz
[Uc] control circuit voltage	30 V AC 40...400 Hz
Operating time	100...170 ms opening 40...65 ms closing
Maximum operating rate	2400 cyc/h 55 °C

Complementary

Coil technology	Without built-in suppressor module
Control circuit voltage limits	Drop-out: 0.35...0.55 Uc 40...400 Hz (at 55 °C) Operational: 0.85...1.1 Uc 40...400 Hz (at 55 °C)
Heat dissipation	8 W at 40...400 Hz

Environment

Ambient air temperature for operation	-5...55 °C
---------------------------------------	------------

Packing Units

Unit Type of Package 1	PCE
Number of Units in Package 1	1

Contractual warranty

Warranty (in months)	18
----------------------	----

Disclaimer: This documentation is not intended as a substitute for and is not to be used for determining suitability or reliability of these products for specific user applications



Environmental Data

Schneider Electric aims to achieve Net Zero status by 2050 through supply chain partnerships, lower impact materials, and circularity via our ongoing “Use Better, Use Longer, Use Again” campaign to extend product lifetimes and recyclability.

[Environmental Data explained >](#)

[How we assess product sustainability >](#)



Environmental footprint

[Environmental Disclosure](#)

[Product Environmental Profile](#)

Use Better



Materials and Substances

Packaging made with recycled cardboard

Yes

Packaging without single use plastic

Yes

Use Longer



Lifetime extension

Repair

No