

Power Mod

Overview of Families

3
METER
CENTERS



WML - Fusible Switch Lever Bypass Meter stacks

This Commercial Lever Bypass meter stacks (type WML) feature a 400 Amp - class T - fusible pull out assembly.

Features include:

- High-quality, time proven Talon HQ sockets
- Removable back knockout plate to facilitate wiring
- Available in single and three phases designs
- Single position with 400 Amp tenant main
- Ease of wiring

Lever Bypass With Fusible Switch Quick Reference:

- 400A 1 position
- 1200A horizontal bus rating
- UL Standard #UL67
- UL file #E27100
- AIC rating 65KAIC
- Voltage:
 - Single phase 120/240V AC max
 - Three phase in, single phase out 208Y/120V AC
 - Three Phase 240V AC max
- Outdoor= NEMA 3R rated
- Indoor= NEMA 1 rated



WMLZ/ WMLZF – Fusible Residential Lever Bypass Meter Stacks

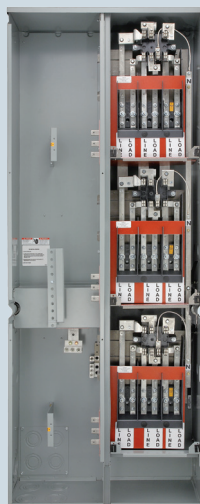
The WMLZ and WMLZF lever bypass meter stacks are designed to allow the use of class T (400 Amp max) fuses ahead of all meter positions where the local serving utility may require it. WMLZF stacks feature a 400 Amp fusible pull out assembly which connects to a secondary 400 Amp horizontal bus that can feed downstream meter stacks. The WMLZ stacks include the secondary horizontal bus that can connect from the WMLZF meter stacks. The standard Power Mod 1200amp horizontal bus "passes thru" to feed downstream modules – the meter sockets in WMLZ and WMLZF do NOT connect directly to the 1200 Amp horizontal bus – only to the 400 Amp horizontal bus.

Features include:

- High-quality, time proven Talon HQ sockets
- 125 Amp capability for 3-phase in/ single-phase out
- 3 to 6 positions in both the fused stack and the expansion stack
- 400 Amp class T fusible-pullout in WMLZF stacks
- Secondary 400 Amp thru bus to supply power to downstream sockets
- Ease of wiring – tenant mains require only a single bend
- Preconfigures and wired.

Xcel Residential Lever Bypass Quick Reference:

- 125A 3-6 position
- 1200A horizontal bus rating
- 400A secondary horizontal-bus rating and vertical bus rating
- UL Standard #UL67
- UL file #E27100
- AIC rating (100K)
- Voltage
 - Three phase in, single phase out 208Y/120V AC
- Outdoor = NEMA 3R rated
- Indoor = NEMA 1 rated



WMT – Test Block Bypass Meter Stacks

Commercial Test Block Bypass Meter Stacks (type WMT) are designed to meet the requirements of those utilities specifying test block bypass meter sockets for commercial applications in areas subscribing to the EUSERC standards.

Features include:

- High-quality, time-proven Siemens SMM switchboard meter socket
- Removable back knockout plate to facilitate wiring
- 225 Amp capability in single and three phase designs
- Up to 3 positions with 225 Amp tenant mains
- Wiring flexibility - tenant mains require only a single bend
- Three phase input, single phase output modules
- In line wiring: side knockouts allow wiring for adjacent units to pass through

Test Block Bypass quick reference

- 225A 1-3 positions
- 1200A horizontal bus rating
- UL Standard #'s 67
- UL file # E27100
- AIC Rating (100k)
- Voltage
 - Single phase 120/240V AC max
 - 3 phase in single phase out 120Y/208V AC max
 - Three phase 240V AC max
- Outdoor= NEMA 3R rated
- Indoor= NEMA 1 rated
- EUSERC drawing numbers 312 and 353

