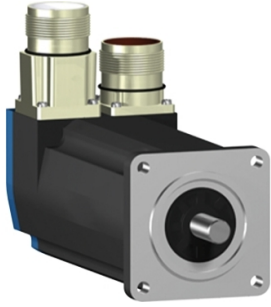


Product data sheet

Specifications



servo motor BSH, Lexium 05,
0.9N.m, 6000rpm, 55mm, untapped
shaft, Sincos single turn, with brake,
IP65, straight

BSH0552T21F1A

⚠ Discontinued

⚠ Discontinued on: Jun 30, 2023

**Product availability: Non-Stock - Not normally stocked in
distribution facility**

Main

Device short name	BSH
Product or Component Type	Servo motor
Maximum mechanical speed	9000 rpm
Continuous stall torque	<p>7.08 lbf.in (0.8 N.m) LXM32.U90M2 3 A, 115 V, single phase</p> <p>7.08 lbf.in (0.8 N.m) LXM32.U90M2 3 A, 230 V, single phase</p> <p>8.0 lbf.in (0.9 N.m) LXM05AD10M2, 200...240 V, single phase</p> <p>8.0 lbf.in (0.9 N.m) LXM05BD10M2, 200...240 V, single phase</p> <p>8.0 lbf.in (0.9 N.m) LXM05CD10M2, 200...240 V, single phase</p> <p>8.0 lbf.in (0.9 N.m) LXM05AD10M3X, 200...240 V, three phase</p> <p>8.0 lbf.in (0.9 N.m) LXM05BD10M3X, 200...240 V, three phase</p> <p>8.0 lbf.in (0.9 N.m) LXM05CD10M3X, 200...240 V, three phase</p> <p>8.0 lbf.in (0.9 N.m) LXM15LD13M3, 230 V, single phase</p> <p>8.0 lbf.in (0.9 N.m) LXM15LD13M3 3 A, 230 V, three phase</p> <p>6.82 lbf.in (0.77 N.m) LXM05CU70M2, 200...240 V, single phase</p> <p>8.0 lbf.in (0.9 N.m) LXM05AD10F1, 110...120 V, single phase</p> <p>8.0 lbf.in (0.9 N.m) LXM05AD17F1, 110...120 V, single phase</p> <p>8.0 lbf.in (0.9 N.m) LXM05BD10F1, 110...120 V, single phase</p> <p>8.0 lbf.in (0.9 N.m) LXM05BD17F1, 110...120 V, single phase</p> <p>8.0 lbf.in (0.9 N.m) LXM05CD10F1, 110...120 V, single phase</p> <p>8.0 lbf.in (0.9 N.m) LXM05CD17F1, 110...120 V, single phase</p>
Peak stall torque	<p>16.8 lbf.in (1.9 N.m) LXM32.U90M2 3 A, 115 V, single phase</p> <p>22.1 lbf.in (2.5 N.m) LXM32.U90M2 3 A, 230 V, single phase</p> <p>13.3 lbf.in (1.5 N.m) LXM15LD13M3, 230 V, single phase</p> <p>11.59 lbf.in (1.31 N.m) LXM05CU70M2, 200...240 V, single phase</p> <p>15.67 lbf.in (1.77 N.m) LXM05AD10F1, 110...120 V, single phase</p> <p>15.67 lbf.in (1.77 N.m) LXM05AD10M2, 200...240 V, single phase</p> <p>23.9 lbf.in (2.7 N.m) LXM05AD17F1, 110...120 V, single phase</p> <p>15.67 lbf.in (1.77 N.m) LXM05BD10F1, 110...120 V, single phase</p> <p>15.67 lbf.in (1.77 N.m) LXM05BD10M2, 200...240 V, single phase</p> <p>23.9 lbf.in (2.7 N.m) LXM05BD17F1 3 A, 110...120 V, single phase</p> <p>15.67 lbf.in (1.77 N.m) LXM05CD10F1, 110...120 V, single phase</p> <p>15.67 lbf.in (1.77 N.m) LXM05CD10M2, 200...240 V, single phase</p> <p>23.9 lbf.in (2.7 N.m) LXM05CD17F1, 110...120 V, single phase</p> <p>13.3 lbf.in (1.5 N.m) LXM15LD13M3, 230 V, three phase</p> <p>15.67 lbf.in (1.77 N.m) LXM05AD10M3X, 200...240 V, three phase</p> <p>15.67 lbf.in (1.77 N.m) LXM05BD10M3X, 200...240 V, three phase</p> <p>15.67 lbf.in (1.77 N.m) LXM05CD10M3X, 200...240 V, three phase</p>

Price is "List Price" and may be subject to a trade discount – check with your local distributor or retailer for actual price.

Nominal output power	<p>250 W LXM32.U90M2 3 A, 115 V, single phase 450 W LXM32.U90M2 3 A, 230 V, single phase 240 W LXM05CU70M2, 200...240 V, single phase 250 W LXM05AD10F1, 110...120 V, single phase 250 W LXM05AD17F1, 110...120 V, single phase 250 W LXM05BD10F1, 110...120 V, single phase 250 W LXM05BD17F1, 110...120 V, single phase 250 W LXM05CD10F1, 110...120 V, single phase 250 W LXM05CD17F1, 110...120 V, single phase 450 W LXM05AD10M2 3 A, 200...240 V, single phase 450 W LXM05BD10M2, 200...240 V, single phase 450 W LXM05CD10M2, 200...240 V, single phase 450 W LXM15LD13M3, 230 V, single phase 450 W LXM05AD10M3X, 200...240 V, three phase 450 W LXM05BD10M3X, 200...240 V, three phase 450 W LXM05CD10M3X, 200...240 V, three phase 570 W LXM15LD13M3, 230 V, three phase</p>
Nominal torque	<p>6.82 lbf.in (0.77 N.m) LXM32.U90M2 3 A, 115 V, single phase 6.55 lbf.in (0.74 N.m) LXM32.U90M2 3 A, 230 V, single phase 6.37 lbf.in (0.72 N.m) LXM15LD13M3, 230 V, single phase 6.82 lbf.in (0.77 N.m) LXM05CU70M2, 200...240 V, single phase 8.0 lbf.in (0.9 N.m) LXM05AD10F1, 110...120 V, single phase 8.0 lbf.in (0.9 N.m) LXM05AD10M2, 200...240 V, single phase 8.0 lbf.in (0.9 N.m) LXM05AD17F1, 110...120 V, single phase 8.0 lbf.in (0.9 N.m) LXM05BD10F1, 110...120 V, single phase 8.0 lbf.in (0.9 N.m) LXM05BD10M2, 200...240 V, single phase 8.0 lbf.in (0.9 N.m) LXM05BD17F1 3 A, 110...120 V, single phase 8.0 lbf.in (0.9 N.m) LXM05CD10F1, 110...120 V, single phase 8.0 lbf.in (0.9 N.m) LXM05CD10M2, 200...240 V, single phase 8.0 lbf.in (0.9 N.m) LXM05CD17F1, 110...120 V, single phase 6.02 lbf.in (0.68 N.m) LXM15LD13M3, 230 V, three phase 8.0 lbf.in (0.9 N.m) LXM05AD10M3X, 200...240 V, three phase 8.0 lbf.in (0.9 N.m) LXM05BD10M3X, 200...240 V, three phase 8.0 lbf.in (0.9 N.m) LXM05CD10M3X, 200...240 V, three phase</p>
Nominal speed	<p>3000 rpm LXM32.U90M2 3 A, 115 V, single phase 6000 rpm LXM32.U90M2 3 A, 230 V, single phase 3000 rpm LXM05AD10F1, 110...120 V, single phase 3000 rpm LXM05BD10F1, 110...120 V, single phase 3000 rpm LXM05CD10F1, 110...120 V, single phase 3000 rpm LXM05CU70M2, 200...240 V, single phase 6000 rpm LXM05AD10M2, 200...240 V, single phase 6000 rpm LXM05BD10M2, 200...240 V, single phase 6000 rpm LXM05CD10M2, 200...240 V, single phase 6000 rpm LXM05AD10M3X 3 A, 200...240 V, three phase 6000 rpm LXM05BD10M3X, 200...240 V, three phase 6000 rpm LXM05CD10M3X, 200...240 V, three phase 8000 rpm LXM15LD13M3, 230 V, three phase 3000 rpm LXM05AD17F1, 110...120 V, single phase 3000 rpm LXM05BD17F1, 110...120 V, single phase 3000 rpm LXM05CD17F1, 110...120 V, single phase 6000 rpm LXM15LD13M3, 230 V, single phase</p>
Product compatibility	<p>LXM05AD10F1 110...120 V single phase LXM05AD10M2 200...240 V single phase LXM05AD17F1 110...120 V single phase LXM05BD10F1 110...120 V single phase LXM05BD10M2 200...240 V single phase LXM05BD17F1 110...120 V single phase LXM05CD10F1 110...120 V single phase LXM05CD10M2 200...240 V single phase LXM05CD17F1 110...120 V single phase LXM05CU70M2 200...240 V single phase LXM15LD13M3 230 V single phase LXM32.U90M2 115 V single phase LXM32.U90M2 230 V single phase LXM05AD10M3X 200...240 V three phase LXM05BD10M3X 200...240 V three phase LXM05CD10M3X 200...240 V three phase LXM15LD13M3 230 V three phase</p>
Shaft end	Untapped
IP Degree of Protection	<p>IP65 standard IP67 with IP67 kit</p>
Speed feedback resolution	131072 points/turn
Holding brake	With

Mounting Support	International standard flange
Electrical Connection	Straight connectors

Complementary

Range Compatibility	Lexium 15 Lexium 32 Lexium 05
supply voltage max	480 V
Phase	Three phase
Continuous stall current	2.2 A
maximum continuous power	0.67 W
Maximum current Irms	6 A LXM32.U90M2 115 V 8.8 A LXM32.U90M2 230 V 10.3 A LXM15LD13M3 8.8 A LXM05AD10F1 8.8 A LXM05AD17F1 8.8 A LXM05CU70M2 8.8 A LXM05AD10M2 8.8 A LXM05AD10M3X 8.8 A LXM05BD10F1 230 V 8.8 A LXM05BD17F1 8.8 A LXM05BD10M2 8.8 A LXM05BD10M3X 8.8 A LXM05CD10F1 8.8 A LXM05CD17F1 8.8 A LXM05CD10M2 8.8 A LXM05CD10M3X
Maximum permanent current	8.8 A
Switching frequency	8 kHz
Second shaft	Without second shaft end
Shaft diameter	0.4 in (9 mm)
Shaft length	0.8 in (20 mm)
Feedback type	Single turn SinCos Hiperface
Holding torque	7.08 lbf.in (0.8 N.m) holding brake
Motor flange size	2.2 in (55 mm)
Number of motor stacks	2
Torque constant	0.36 N.m/A 248 °F (120 °C)
Back emf constant	22 V/krpm 248 °F (120 °C)
Rotor inertia	0.1173 kg.cm ²
Stator resistance	5.2 Ohm 68 °F (20 °C)
Stator inductance	10.6 mH 68 °F (20 °C)
Stator electrical time constant	2.04 ms 68 °F (20 °C)
Maximum radial force Fr	190 N 7000 rpm 190 N 8000 rpm 200 N 6000 rpm 220 N 5000 rpm 230 N 4000 rpm 260 N 3000 rpm 290 N 2000 rpm 370 N 1000 rpm
Maximum axial force Fa	0.2 x Fr
Brake pull-in power	10 W
Type of cooling	Natural convection

Length	7.1 in (181 mm)
Centring collar diameter	1.6 in (40 mm)
Centring collar depth	0.08 in (2 mm)
Number of mounting holes	4
Mounting holes diameter	0.2 in (5.5 mm)
Circle diameter of the mounting holes	2.5 in (63 mm)
Net Weight	3.5 lb(US) (1.6 kg)
Sizing reference	BSH0552T
Network number of phases	3
Accuracy error [angular]	1.4 °
Temperature copper hot	248 °F (120 °C)
Temperature magnet hot	212 °F (100 °C)
Temperature magnet rt	68 °F (20 °C)

Ordering and shipping details

Category	US1PC5318282
Discount Schedule	PC53
GTIN	3389118159129
Returnability	No

Packing Units

Unit Type of Package 1	PCE
Nbr. of units in pkg.	1
Package 1 Height	4.8 in (12.3 cm)
Package 1 Width	5.04 in (12.8 cm)
Package 1 Length	14.8 in (37.7 cm)
Package weight(Lbs)	2.76 lb(US) (1.25 kg)

Contractual warranty

Warranty (in months)	18
----------------------	----



Environmental Data

Schneider Electric aims to achieve Net Zero status by 2050 through supply chain partnerships, lower impact materials, and circularity via our ongoing “Use Better, Use Longer, Use Again” campaign to extend product lifetimes and recyclability.

[Environmental Data explained >](#)

[How we assess product sustainability >](#)

Use Better



Materials and Substances

[EU RoHS Directive](#)

Pro-active compliance (Product out of EU RoHS legal scope)

California proposition 65

WARNING: This product can expose you to chemicals including: Lead and lead compounds, which is known to the State of California to cause cancer and birth defects or other reproductive harm. For more information go to www.P65Warnings.ca.gov

Use Longer



Lifetime extension

Repair

No

Use Again



Repack and remanufacture

Circularity Profile

No need of specific recycling operations

Dimensions Drawings

Servo Motors Dimensions

Example with Straight Connectors



- a: Power supply for servo motor brake
- b: Power supply for servo motor encoder
- (1) M4 screw
- (2) Shaft end, keyed slot (optional)
- (3) For screw M3 x 9 mm/M3 x 0.35 in.

Dimensions in mm

Straight connectors		Rotatable angled connectors		c (without brake)	c (with brake)
b	b1	b	b1		
39.5	25.5	39.5	39.5	154.5	181

Dimensions in in.

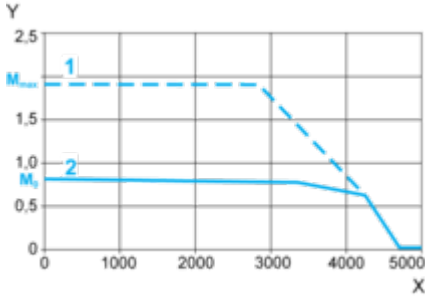
Straight connectors		Rotatable angled connectors		c (without brake)	c (with brake)
b	b1	b	b1		
1.55	1.00	1.55	1.55	6.08	7.12

Performance Curves

115 V Single-Phase Supply Voltage

Torque/Speed Curves

Servo motor with LXM32-U90M2 servo drive



X Speed in rpm

Y Torque in Nm

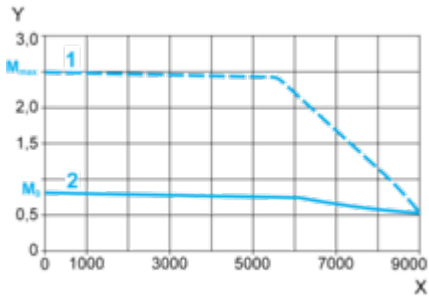
1 Peak torque

2 Continuous torque

230 V Single-Phase Supply Voltage

Torque/Speed Curves

Servo motor with LXM32•U90M2 servo drive



X Speed in rpm

Y Torque in Nm

1 Peak torque

2 Continuous torque