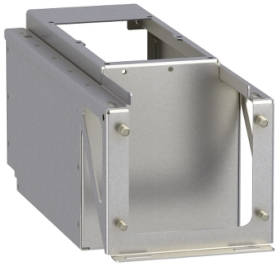


# Product datasheet

Specifications



bottom support, Altivar process  
Modular, standard power module,  
IP54 cabinet

VW3A99ACA02

## Main

Range of product	Altivar Process Modular
Accessory / separate part category	Installation accessory
Accessory / separate part type	Support
Product compatibility	Power module APM, 110...160 kW, 380...480 V
Accessory / separate part destination	Single drive architecture

## Complementary

Device application	Integration of 1cabinet IP54
Kit composition	1 bottom support
Product weight	7.6 kg

## Packing Units

Unit Type of Package 1	PCE
Number of Units in Package 1	1
Package 1 Height	35.000 cm
Package 1 Width	39.000 cm
Package 1 Length	70.000 cm
Package 1 Weight	9.824 kg
Unit Type of Package 2	P12
Number of Units in Package 2	9
Package 2 Height	180.000 cm
Package 2 Width	80.000 cm
Package 2 Length	120.000 cm
Package 2 Weight	104.400 kg

## Contractual warranty

Warranty (in months)	18
----------------------	----



## Environmental Data

Schneider Electric aims to achieve Net Zero status by 2050 through supply chain partnerships, lower impact materials, and circularity via our ongoing “Use Better, Use Longer, Use Again” campaign to extend product lifetimes and recyclability.

[Environmental Data explained >](#)

[How we assess product sustainability >](#)

### Use Better



#### Materials and Substances

Packaging made with recycled cardboard

Yes

Packaging without single use plastic

No

EU RoHS Directive

[Compliant](#)

REACH Regulation

[Free of Substances of Very High Concern above the threshold](#)

### Use Longer



#### Lifetime extension

Repair

No

### Use Again



#### Repack and remanufacture

Take-back

No