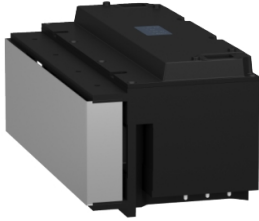


Product data sheet

Specifications



Longstator motor, Lexium MC12 multi carrier, straight, 300mm, IP65

LXMMC12MS06S100

Product availability: Non-Stock - Not normally stocked in distribution facility

Main

Range of Product	Lexium MC12 multi carrier
Product or Component Type	Longstator motor

Complementary

Installation direction	Straight
Peak force	120 N
Accuracy	0.03 repetitive 0.25 absolute
Maximum number of carrier per controller	200
Maximum length of track per controller	131.2 ft (40 m)
Maximum actuation speed	13.1 ft/s (4 m/s)
Maximum attraction force	380 N
Maximum acceleration	393.7 ft/s ² (120 m/s ²)
Minimum distance between carriers	0 ft (0 m)
Maximum number of carrier per segment	6
IP Degree of Protection	IP65
Length	11.8 in (300.4 mm)
Width	6.4 in (162.6 mm)
Depth	5.4 in (136 mm)
Net Weight	17.4 lb(US) (7.9 kg)

Ordering and shipping details

Category	US1PC5218357
Discount Schedule	PC52
GTIN	3606482084995
Returnability	No
Country of origin	DE

Packing Units

Unit Type of Package 1	PCE
Nbr. of units in pkg.	1
Package 1 Height	7.874 in (20.000 cm)

Price is "List Price" and may be subject to a trade discount – check with your local distributor or retailer for actual price.

Package 1 Width	10.236 in (26.000 cm)
Package 1 Length	23.425 in (59.500 cm)
Package weight(Lbs)	20.212 lb(US) (9.168 kg)
Unit Type of Package 2	P12
Number of Units in Package 2	32
Package 2 Height	62.992 in (160.000 cm)
Package 2 Width	31.496 in (80.000 cm)
Package 2 Length	47.244 in (120.000 cm)
Package 2 Weight	714.763 lb(US) (324.211 kg)

Contractual warranty

Warranty (in months)	18
-----------------------------	----



Environmental Data

Schneider Electric aims to achieve Net Zero status by 2050 through supply chain partnerships, lower impact materials, and circularity via our ongoing “Use Better, Use Longer, Use Again” campaign to extend product lifetimes and recyclability.

[Environmental Data explained >](#)

[How we assess product sustainability >](#)



Environmental footprint

Total lifecycle Carbon footprint	20 799 kg CO2 eq.
Environmental Disclosure	Product Environmental Profile
Carbon footprint of the manufacturing phase [A1 to A3]	195 kg CO2 eq.
Carbon footprint of the distribution phase [A4]	1 kg CO2 eq.
Carbon footprint of the installation phase [A5]	0 kg CO2 eq.
Carbon footprint of the use phase [B2, B3, B4, B6]	20 601 kg CO2 eq.
Carbon footprint of the end-of-life phase [C1 to C4]	2 kg CO2 eq.

Use Better



Materials and Substances

Packaging made with recycled cardboard	Yes
Packaging without single use plastic	No
EU RoHS Directive	Compliant with Exemptions
REACH Regulation	REACH Declaration
PVC free	Yes

Use Longer



Lifetime extension

Repair	No
--------	----

Use Again



Repack and remanufacture

Recyclability potential, in %	75
Circularity Profile	End of Life Information
Take-back	No

Offer Marketing Illustration

Product benefits / Features

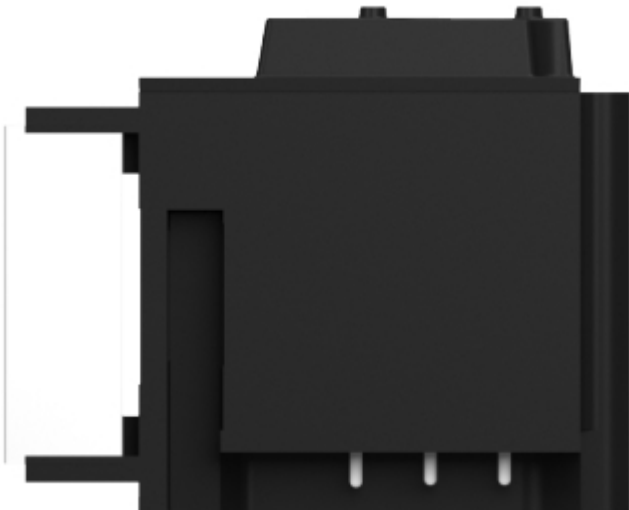
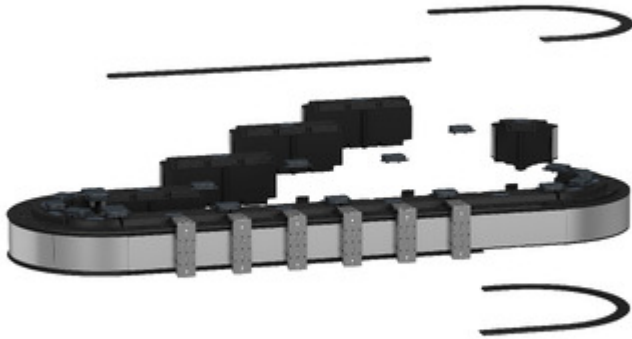
The infographic features a central image of a Lexium MC12 terminal block with four curved arrows pointing towards the four benefit icons. The background is a solid green color.

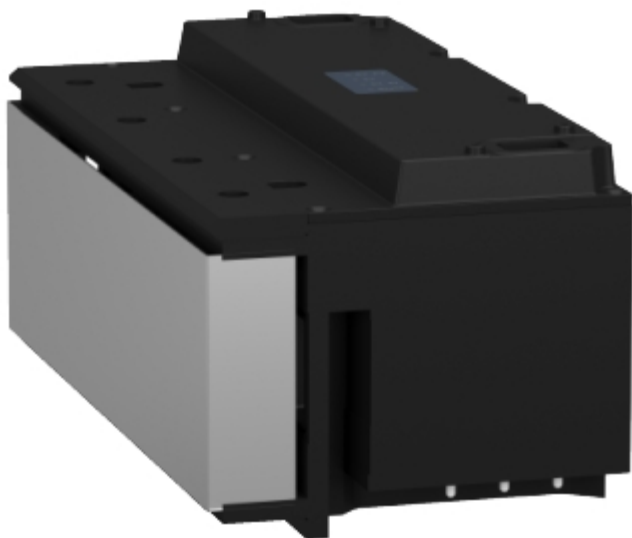
Benefits Lexium™ MC12

- Icon: Gear and lightning bolt**
Increase machine performance and flexibility by up to 50%
Increase your productivity and flexibility with a cost-effective, efficient, and wide range of products to choose from.
- Icon: Document with checkmark**
Reduce your time to market by up to 30% with improved design speed and design quality of your machines.
- Icon: Clock**
Achieve faster changeover time by a simple virtual commissioning and mechanical installation without any special tools.
- Icon: Magnifying glass over graph**
Increase OEE of the machines
Get faster, flexible machines with less maintenance and a higher level of diagnostics.

Image of product / Alternate images

Alternative





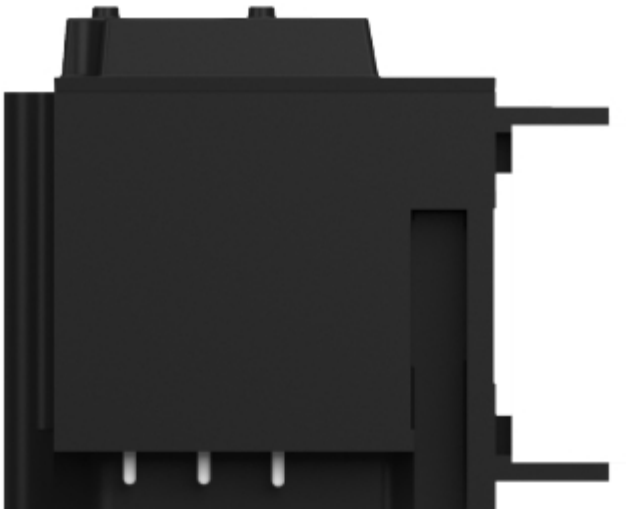




Image of product in real life situation

